

Sofas

# Louis



Louis is a sofa with a traditional flavor, but with lines reinterpreted in a contemporary key. Noble materials and special craftsmanship qualify this model in the best tradition of Made in Italy.

## MODULARITY OF THE LOUIS SECTIONAL SOFA

Louis can be a two-seater, two-and-a-half or three-seater sofa, or have the same side modules to which the island can be added. Its solid structure, because it is made with the supporting parts of durable solid fir and plywood, can be upholstered in fabric, faux leather or leather after the upholstery stage. The base is made of mocha painted iron.



# FINISHES

Will your Louis sofa be in classic leather or the more modern faux leather? Or in the fully removable fabric version?  
Discover the finishes.

## Fabrics

### BASIC

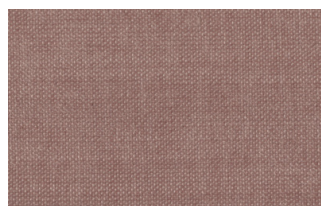
#### X370



3



4



9



10



23



29

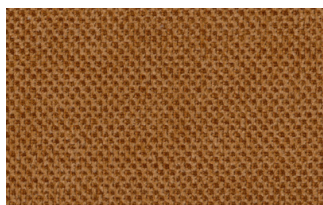


32

### Relax



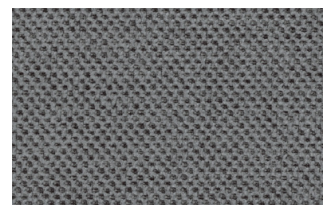
5



20



25



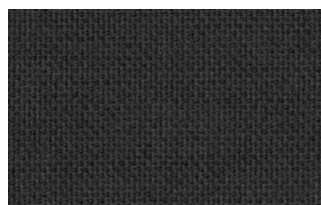
53



62



66



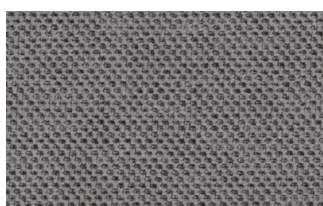
74



81



96



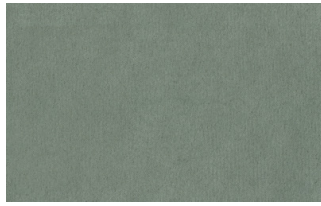
103



## Divina



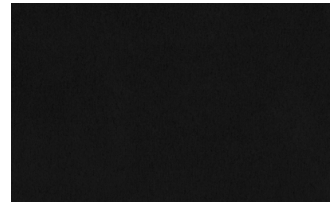
15



19



21



22



34



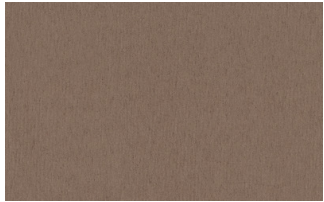
46



49



50



76



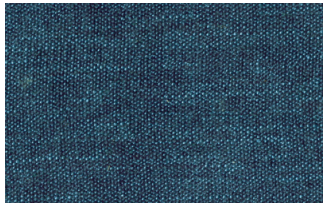
88



561

## START

### Scoop



6



7



9



25



31



59

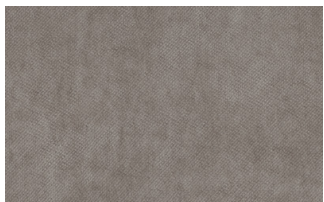


104



561

### Stropiccio



4



6

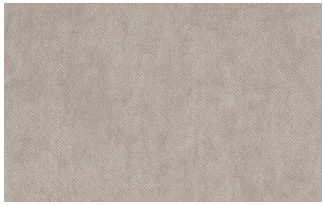


8



17

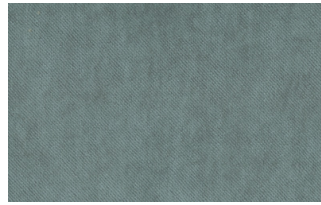




19



20



22

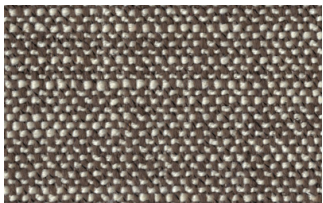


23

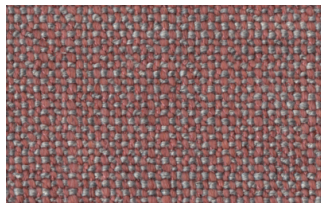


30

## Nodone



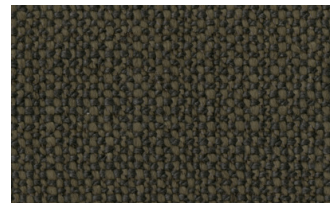
1302



1307



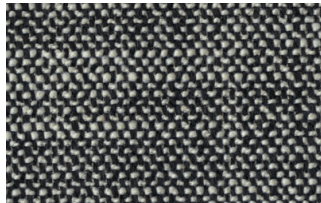
1308



1309



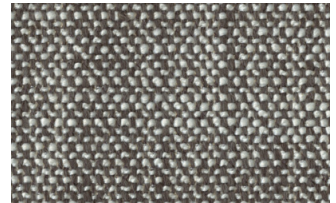
1310



1311



1313



1314

## R Flair



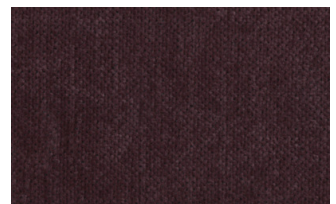
P321-6200-039



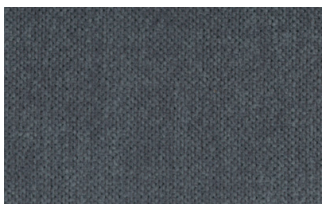
P321-6200-901



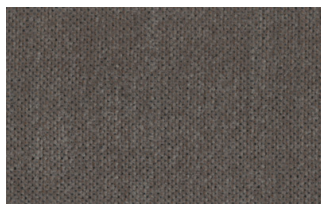
P321-6300-419



P321-6300-503



P321-6300-988

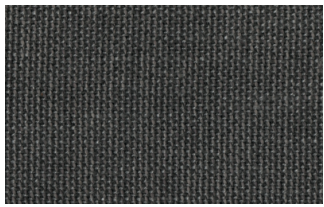


P321-6300-996

## EXTRA

### Anice





1



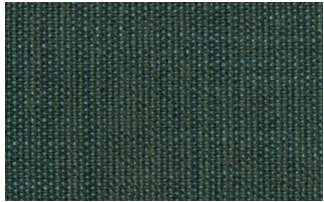
2



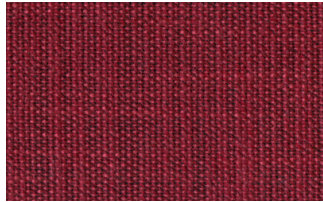
3



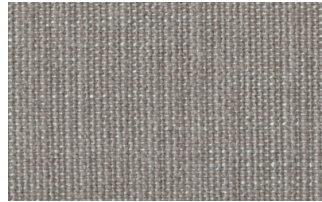
4



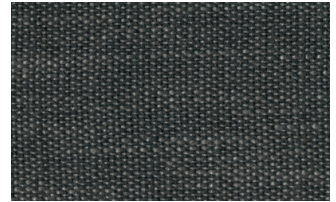
5



6



7

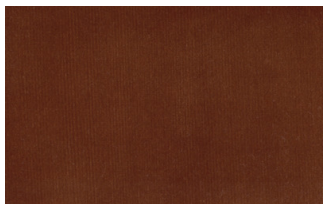


8

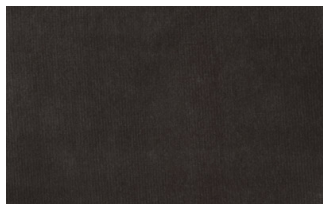


9

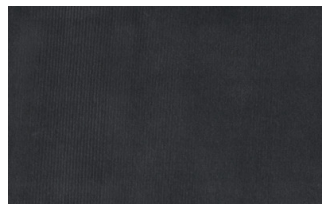
## Lovely



6



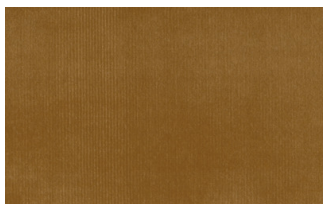
10



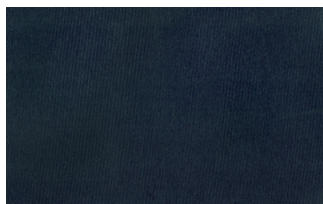
19



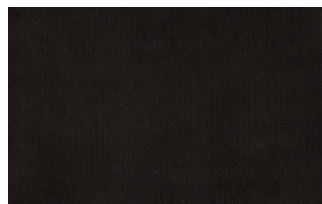
22



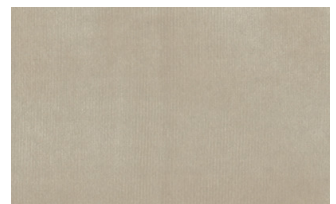
27



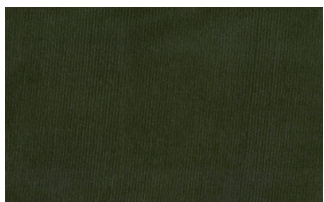
31



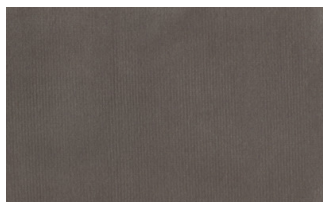
36



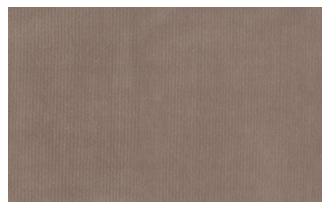
102



113



200



202

## Cosme

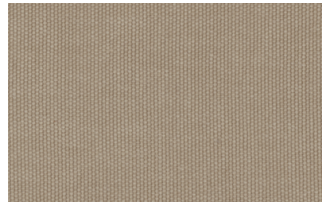




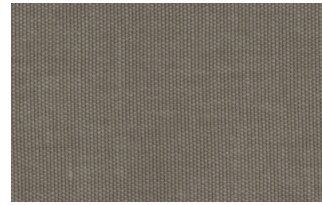
e200



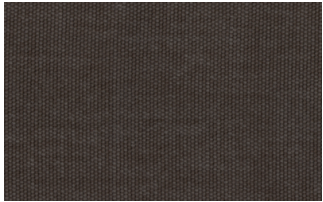
e202



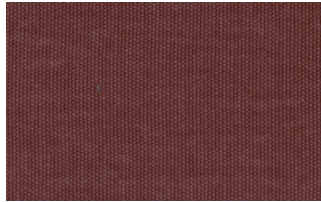
e205



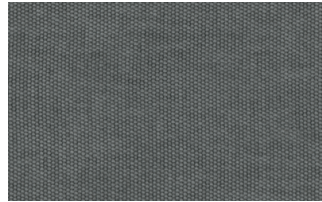
e206



e209



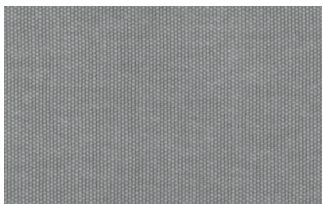
e220



e232



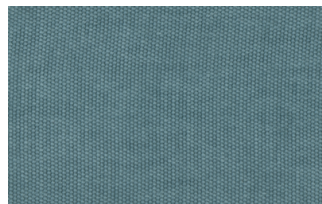
e234



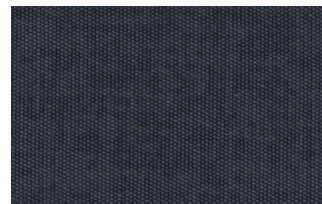
e236



e240

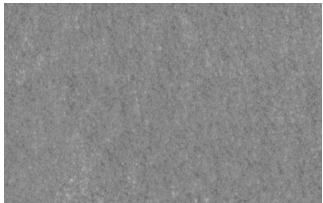


e241



e244

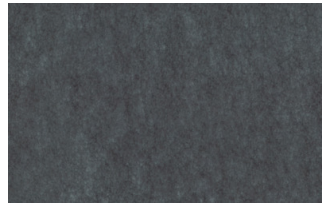
## Soda



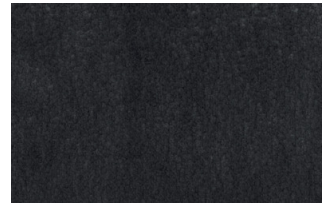
29



30



39



41



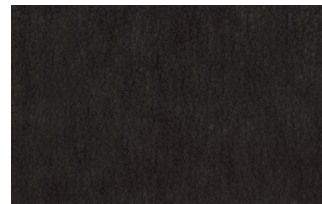
56



62



74



104

## LIGHT

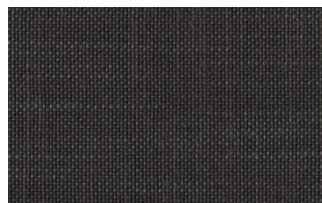
### Lima



2



5

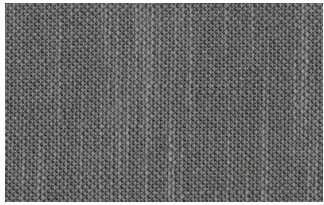


10



12

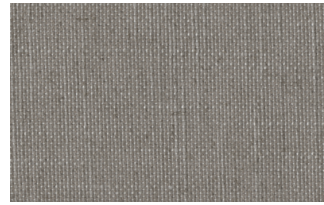




14



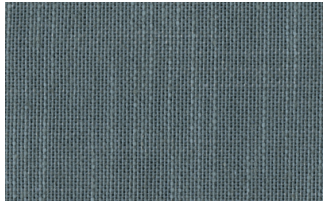
16



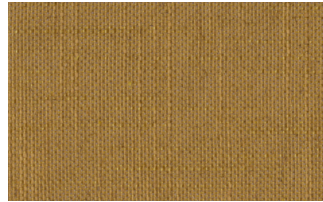
23



29



31

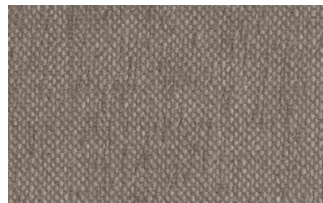


43

## Mimi



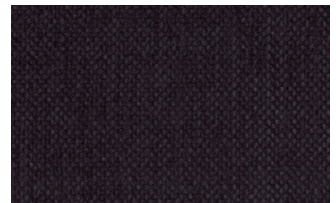
A3004



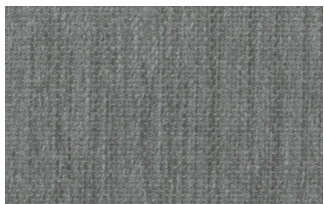
A3005



A3006



A3014



A3018

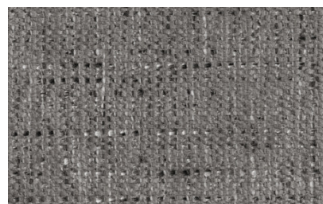


A3023

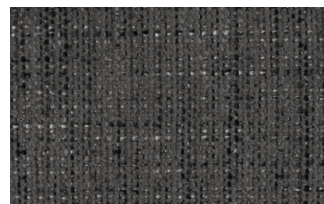
## Memphis



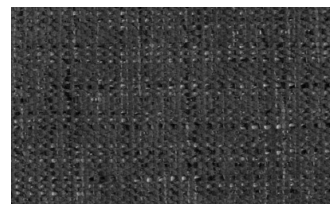
1



6



10



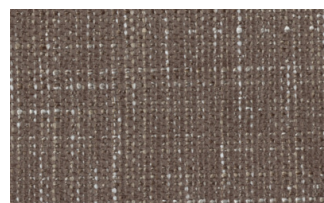
11



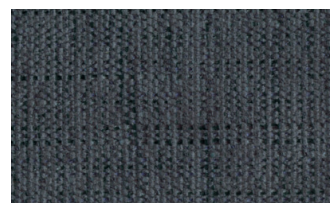
13



14



15



16

## SUPER

### Hylemt





25



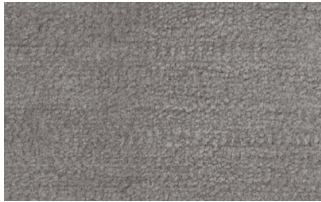
102



109



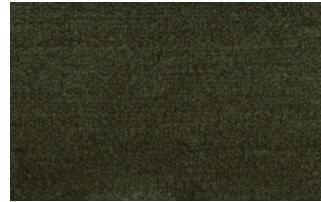
117



121



204



207

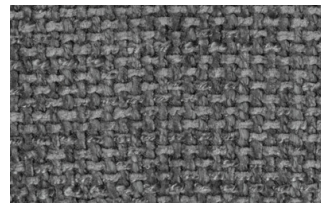
## Axum



3



11



12



18



21



23



29



30

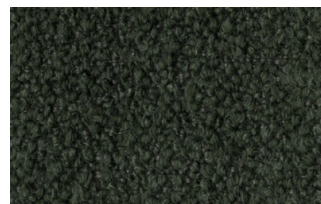
## Barnum Unito



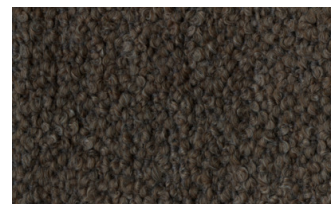
1 bianco



2 corda



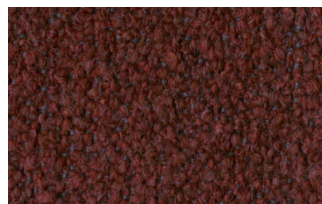
9 bosco



10 piombo



13 lavagna



23 bruciato



24 lana

## Leathers



## K LEATHERS

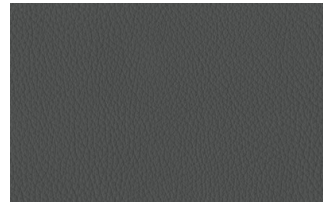
### Leather



200



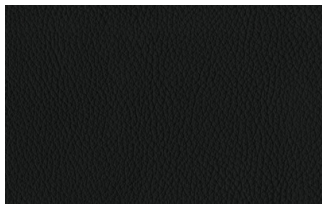
202



204



206



207



208



211



214



217



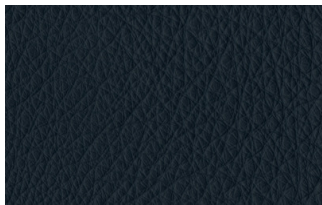
224



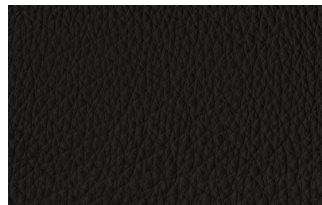
228



234



274



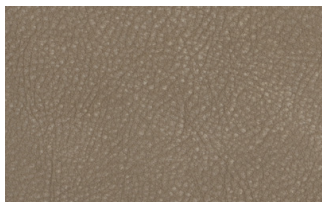
298



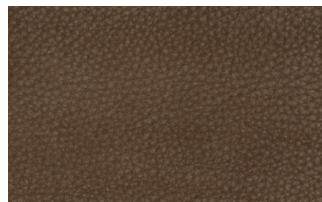
301

## W LEATHERS

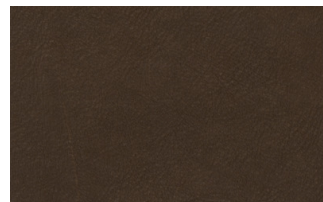
### Nabuk



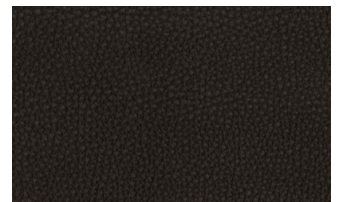
Creta



Camel



marrone

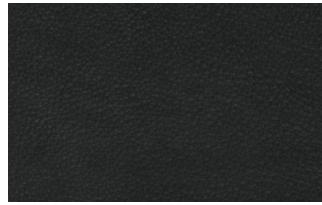


Testa di moro





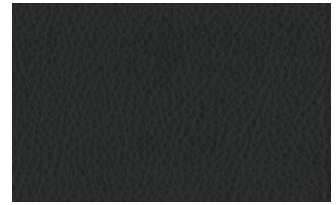
Seppia



Black



Hard leather



Grigio

## Ecoleathers

### EXTRA ECO-LEATHERS

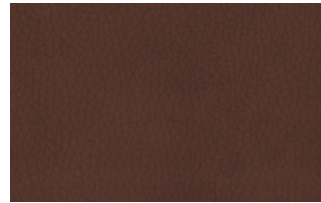
#### Vintage eco-leather



2



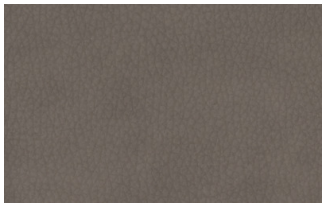
3



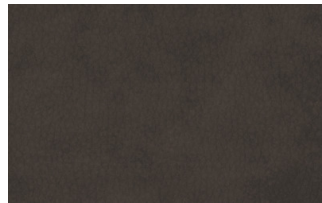
4



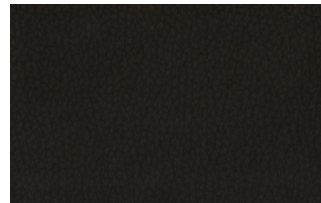
6



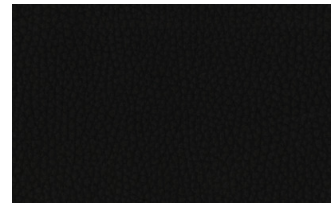
7



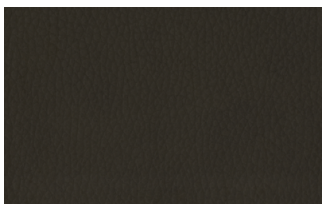
8



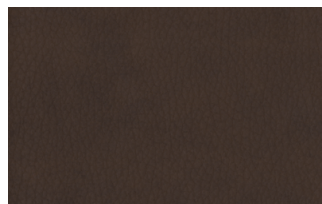
9



14



19



22