

Sofas

# Poldo



Poldo is a comfortable and enveloping sofa with important shapes that are perfectly proportioned. It lends itself to being upholstered in both fabric and leather or faux leather, the latter versions made even grittier by the special stitching of the armrest.

## SECTIONAL SOFA: MODULE RANGE

The extensive modularity of the Poldo sofa makes it versatile and complete: it is available in three lengths and various corner solutions. More specifically, you can compose it with the two-seater, two-and-a-half-seater or three-seater sofa frame, with side modules having the same subdivision, plus the corner element, island or sundial. To complement it, there is also the matching square ottoman.



## STYLE DETAILS

The important shapes of the comfortable Poldo sofa are perfectly proportioned, made gritty and unique by the special seam of the armrest, which lends personality to the whole. The slender polished steel foot, light and rigorous, is also practical because it lifts the sofa off the floor and makes cleaning easier and faster.



# FINISHES

The Poldo sofa lends itself to being upholstered in either leather or faux leather or fabric: which will be your choice? Check out the available finishes now.

## Fabrics

### BASIC

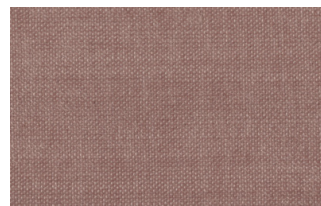
#### X370



3



4



9



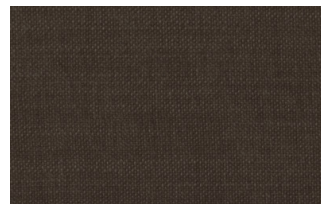
10



23

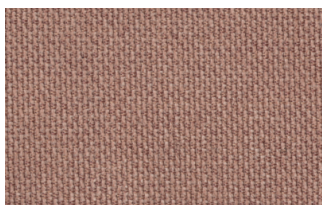


29

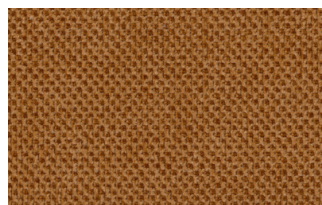


32

### Relax



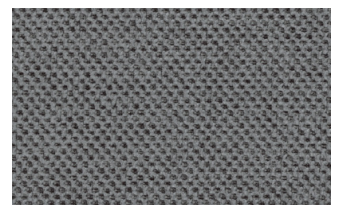
5



20



25



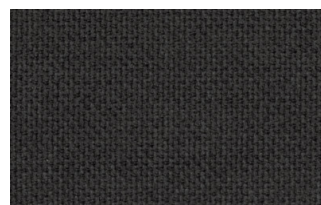
53



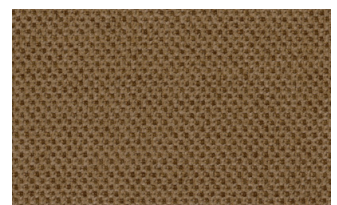
62



66



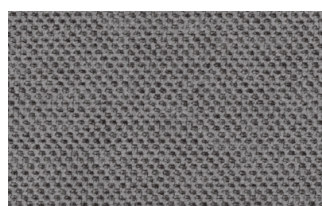
74



81



96

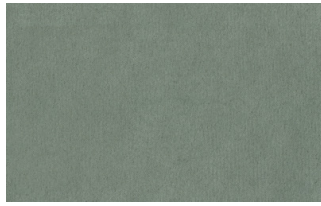


103

## Divina



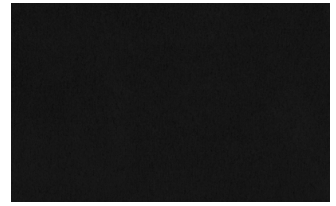
15



19



21



22



34



46



49



50



76



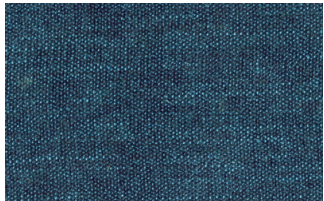
88



561

## START

### Scoop



6



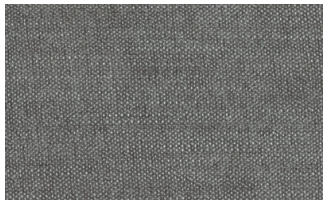
7



9



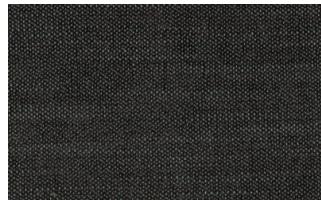
25



31



59

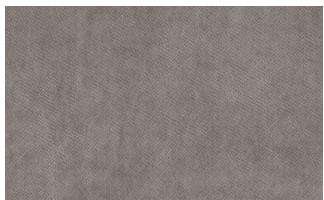


104



561

### Stropiccio



4



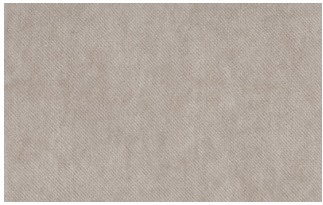
6



8



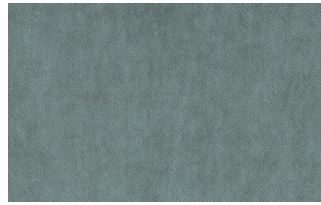
17



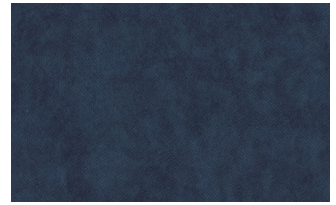
19



20



22

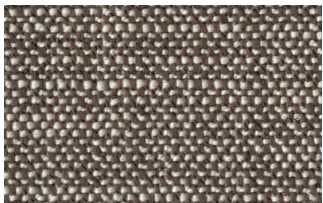


23

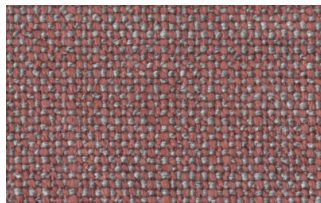


30

## Nodone



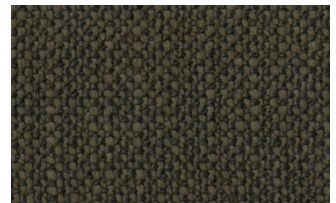
1302



1307



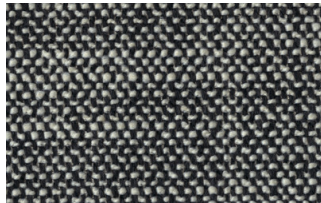
1308



1309



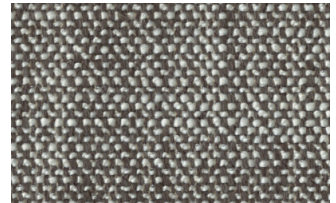
1310



1311



1313



1314

## R Flair



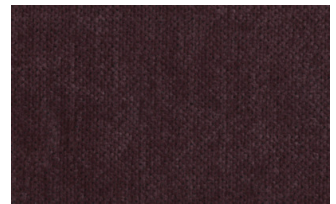
P321-6200-039



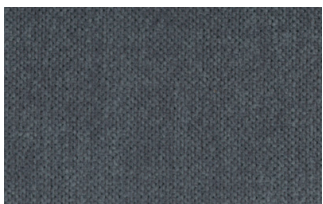
P321-6200-901



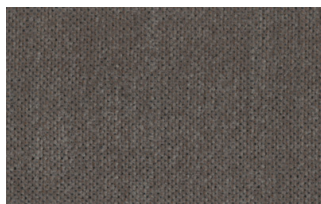
P321-6300-419



P321-6300-503



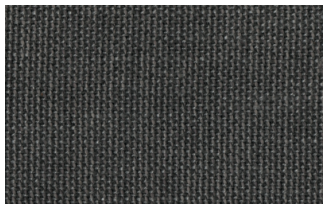
P321-6300-988



P321-6300-996

## EXTRA

### Anice



1



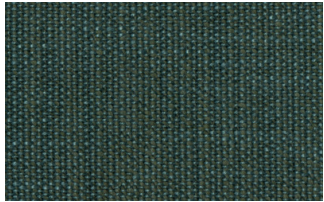
2



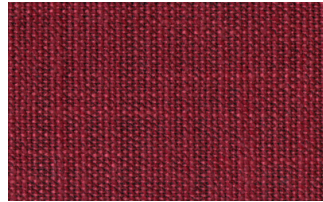
3



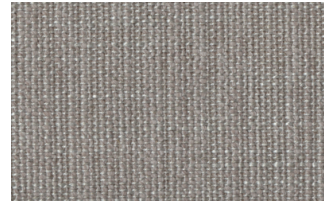
4



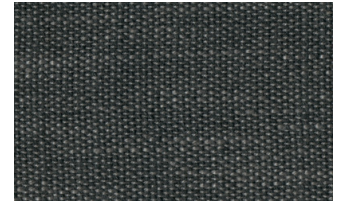
5



6



7

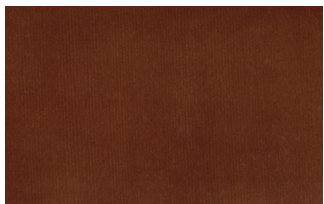


8

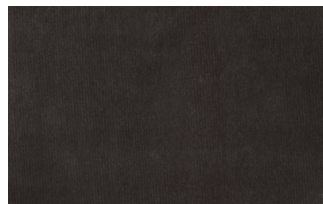


9

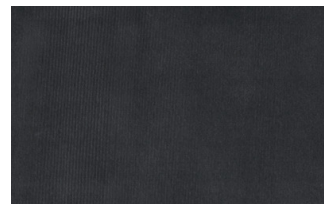
## Lovely



6



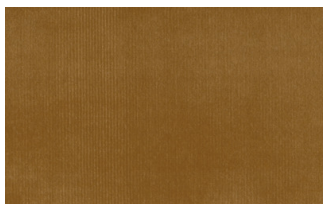
10



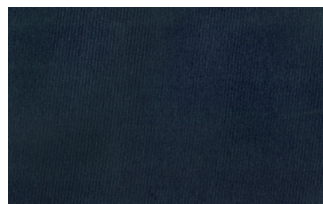
19



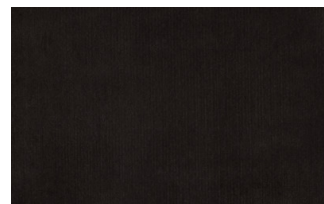
22



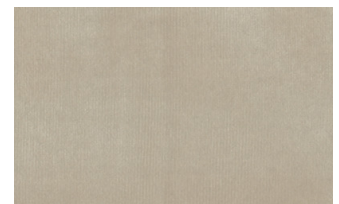
27



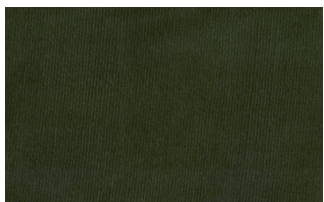
31



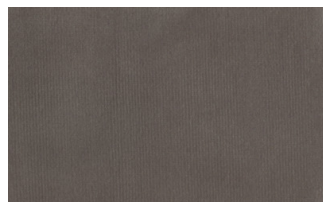
36



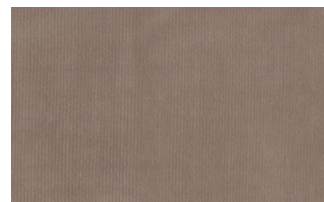
102



113



200

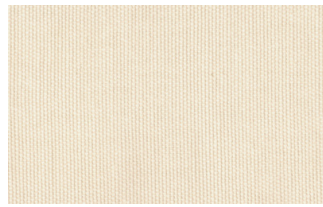


202

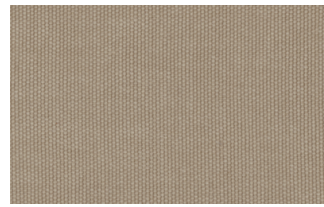
## Cosme



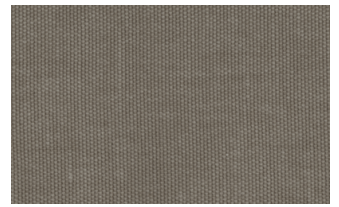
e200



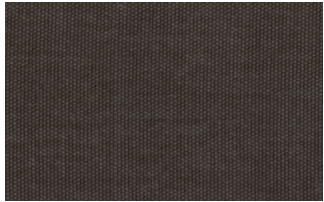
e202



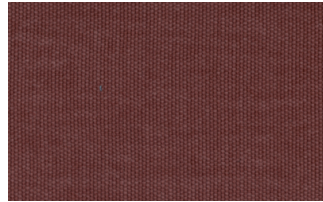
e205



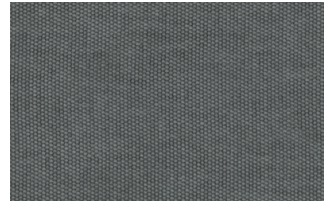
e206



e209



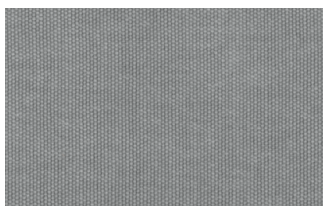
e220



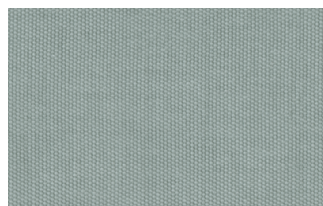
e232



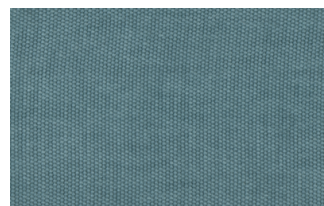
e234



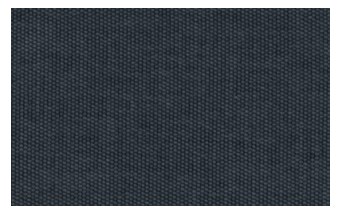
e236



e240

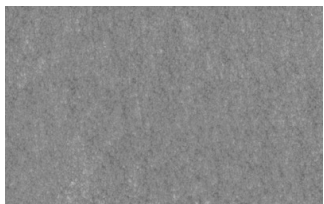


e241



e244

## Soda



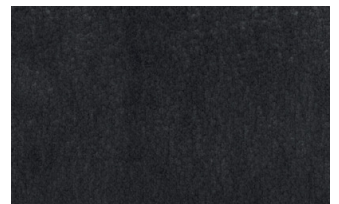
29



30



39



41



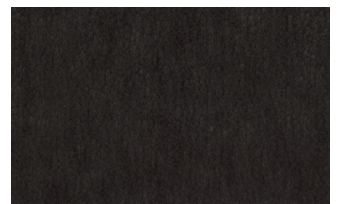
56



62



74



104

## LIGHT

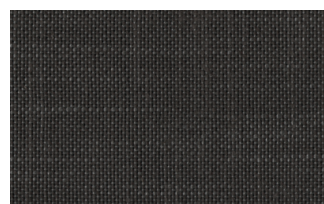
### Lima



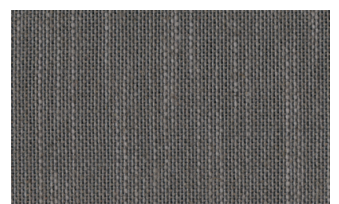
2



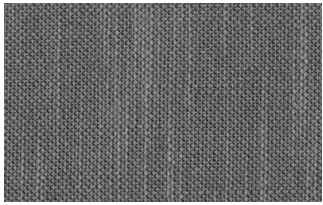
5



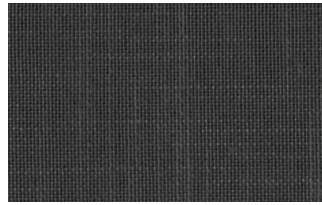
10



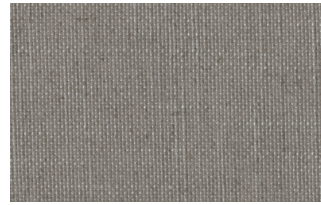
12



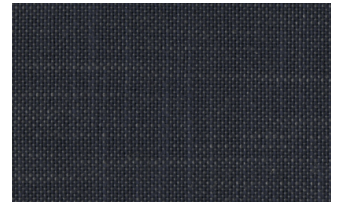
14



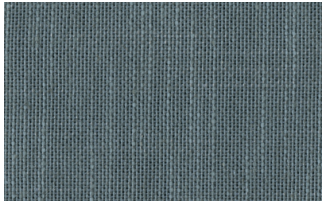
16



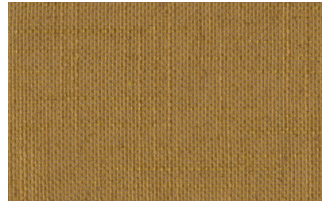
23



29



31



43

## Mimi



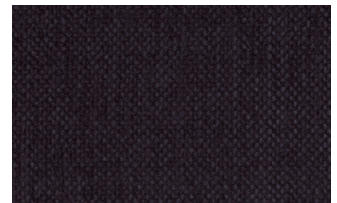
A3004



A3005



A3006



A3014



A3018

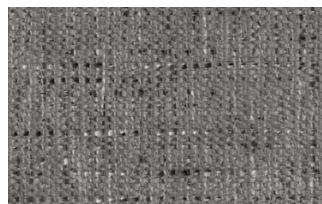


A3023

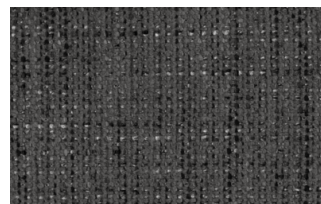
## Memphis



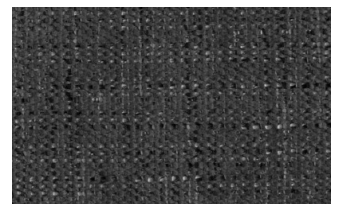
1



6



10



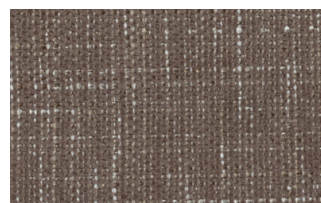
11



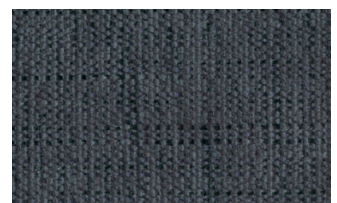
13



14



15



16

## SUPER

### Hylemt





25



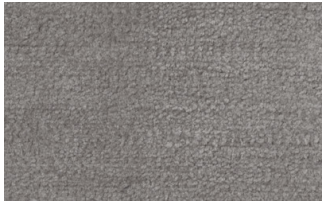
102



109



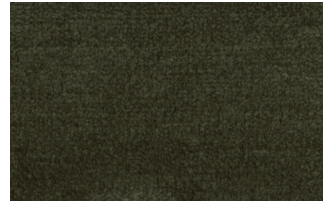
117



121



204



207

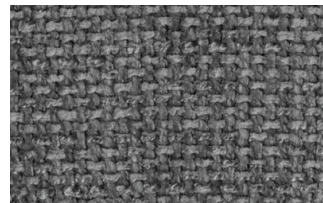
## Axum



3



11



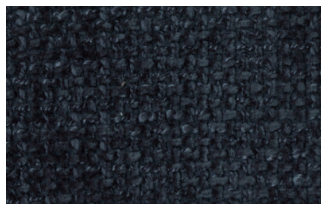
12



18



21



23



29



30

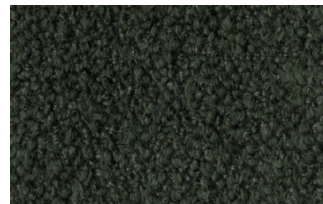
## Barnum Unito



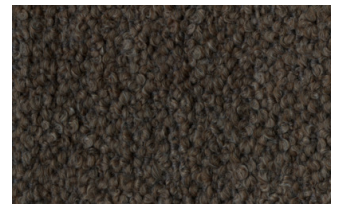
1 bianco



2 corda



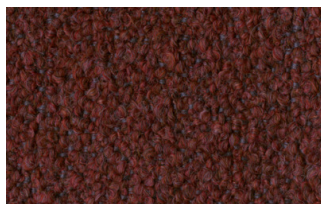
9 bosco



10 piombo



13 lavagna



23 bruciato



24 lana

## Leathers

## K LEATHERS

Leather



200



202



204



206



207



208



211



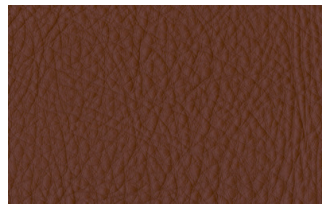
214



217



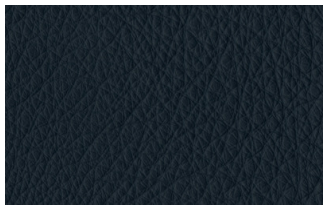
224



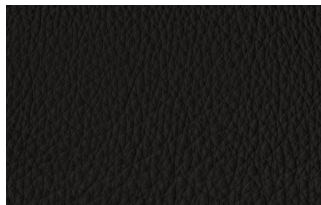
228



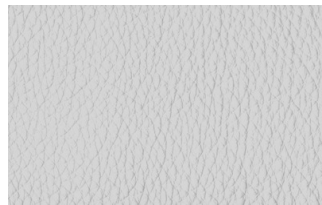
234



274



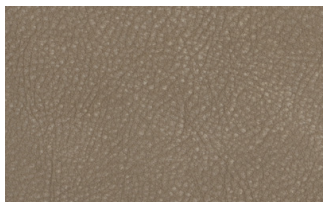
298



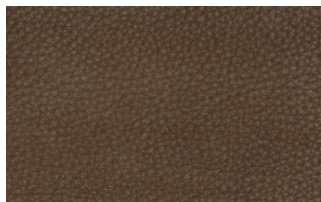
301

## W LEATHERS

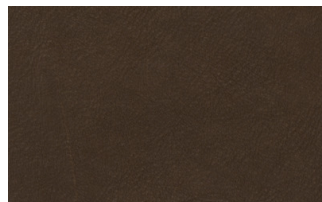
Nabuk



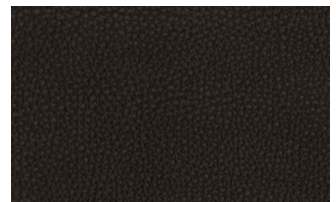
Creta



Camel



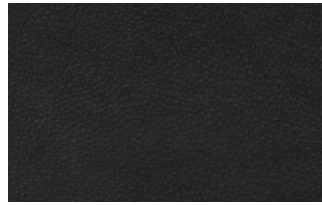
marrone



Testa di moro



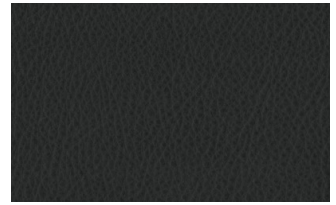
Seppia



Black



Hard leather



Grigio

## Ecoleathers

### EXTRA ECO-LEATHERS

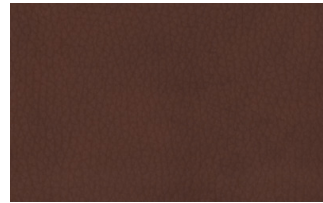
#### Vintage eco-leather



2



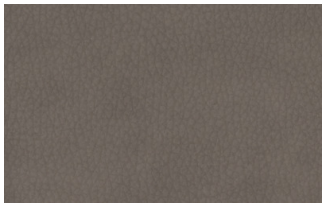
3



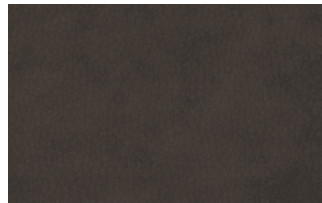
4



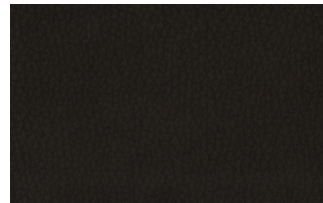
6



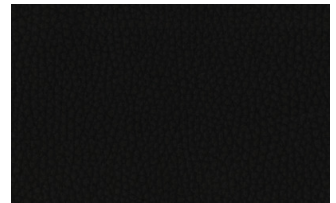
7



8



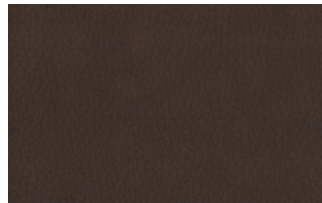
9



14



19



22