

Tavoli

Kiri



È un tavolo lungo con due gambe centrali e piano fisso, rettangolare od ovale, con bordo perimetrale dritto o inclinato 30° a seconda dello stile preferito.



BASAMENTO METALLICO

I due elementi verticali che fungono da gambe sono disegnati in un susseguirsi di aste di metallo a passo irregolare, disposte a croce. Il risultato è di impatto e arioso.



PIANO FISSO

Piano fisso rettangolare in svariate finiture legno, oppure ovale sempre in legno e anche in vetro laccato o gres.



TAVOLO KIRI E SEDIA TAILOR

Le linee precise di Kiri richiamano i tagli meticolosi e le piegature scrupolose della sedia Taylor: abbinamento perfetto.



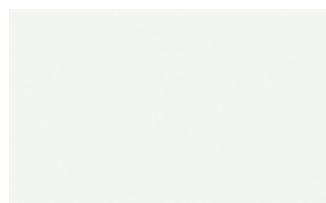
FINITURE

Guarda quali sono le finiture disponibili per il tavolo Kiri e inizia a immaginare come sarà la sua versione perfetta per arredare il tuo spazio.

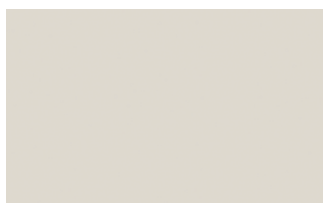
Laccati

LACCATI OPACHI

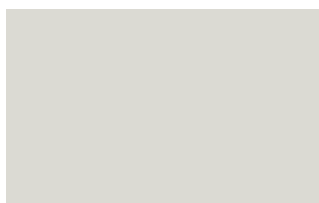
Laccati opachi



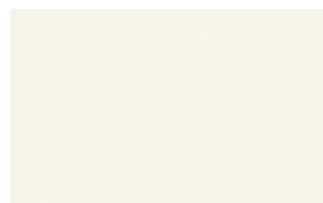
Bianco



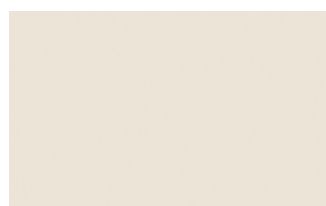
Ghiaccio



Sabbia



Panna



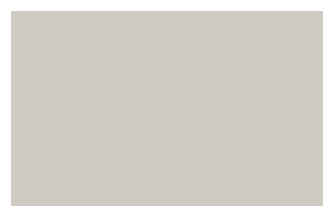
Crema



Grigio seta



Grigio perla



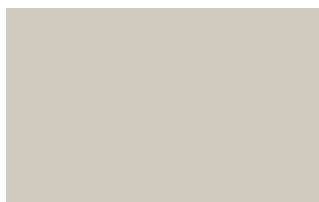
Light grey



Fior di loto



Giallo senape



Tortora



Canapa



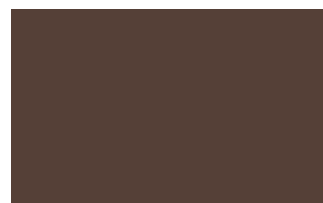
Corda



Dark grey



Terracotta



Moka



Rosso bordeaux



Rosso



Rosa cipria



Bruciato



Carta da zucchero



Grigio blu



Verde pallido



Verde malva



Grigio aston



Celeste



Turchese



Grigio Garda



Blu cobalto



Oceano

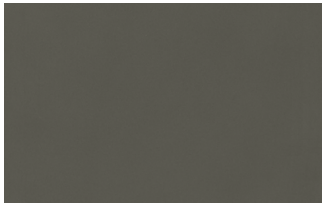


Grigio antracite



Nero

Laccati opachi micalizzati



Titanio



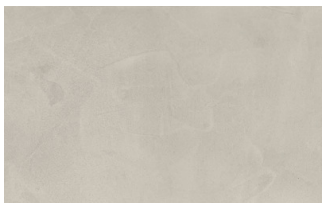
Nichel



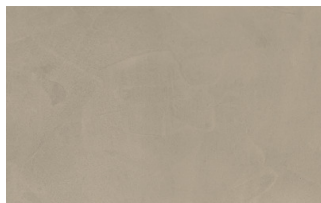
Piombo

SUPERFICI UP

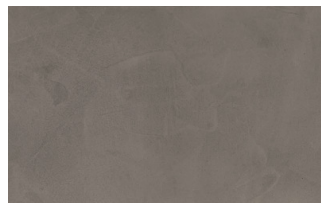
Laccati effetto cemento



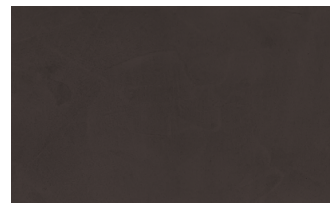
Perla



Argilla

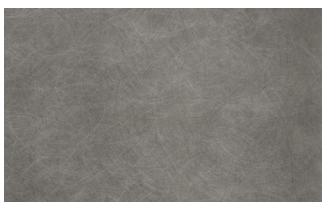


Grafite



Lava

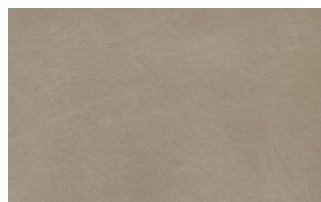
Laccati metallici



Titanio



Piombo



Nichel



Ossido ottone

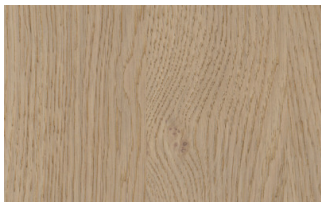


Ossidato bronzo

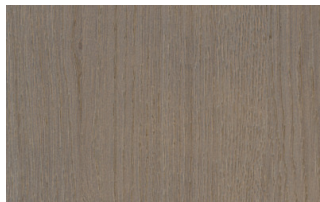
Essenze

ESSENZE 1

Essenze 1



Rovere visone



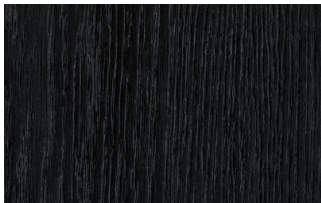
Rovere cenere



Rovere castoro



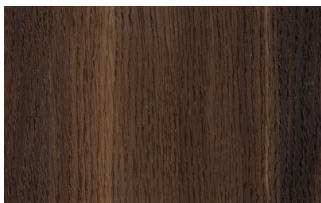
Rovere naturale



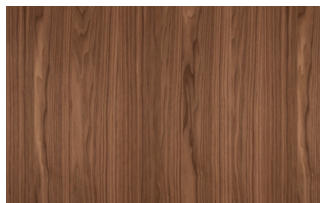
Rovere carbone

ESSENZE 2

Essenze 2



Rovere termotrattato



Noce Canaletto

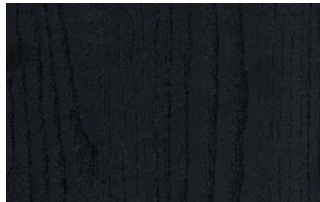
Materici

MATERICI

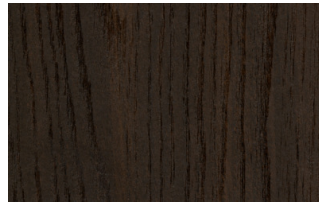
Materici



Avana



Rovere carbone



Rovere termotrattato



Pietra piacentina

Metalli

METALLI 1

Metalli 1



Nero



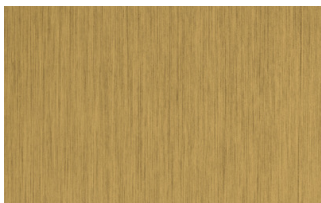
Titanio



Brown

METALLI 2

Metalli 2



Ottone anticato