

Chairs

# Wendy

Wendy is both an indestructible chair and armchair. It has a wooden frame with the special feature that the inner core of the backrest is made of steel, then well padded to make it comfortable and upholstered in fabric, leather or faux leather.



## WENDY ARMCHAIR

The Wendy armchair with armrests undergoes a hand-crafting of lateral tilting of the edge of the armrest. It is thanks to such intervention that the latter appears to be formed by a continuous piece of wood, hollowed out. The wide, comfortable seat gives considerable support to the back and leaves much freedom for aesthetics. A different front and back option is also available, as in the picture that combines faux leather in front and woven faux leather in the back of the backrest.



## WENDY CHAIR

The Wendy chair is elegant in its traditional line and sleek with its generous backrest. It features square and rigorous shapes, ideal for those who love rationality, perfect even in the smallest environments.



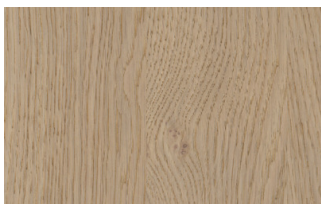
## FINISHES

See what finishes are available for Wendy, the same for both chair and armchair, and imagine the perfect version to furnish your space.

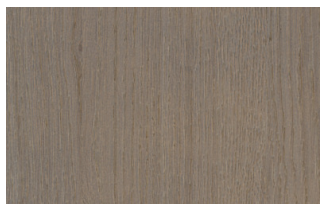
### Woods

#### WOODS 1

##### Woods 1



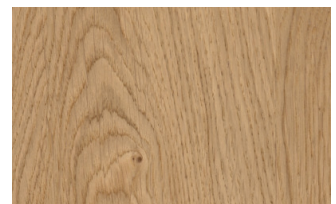
Oak visone



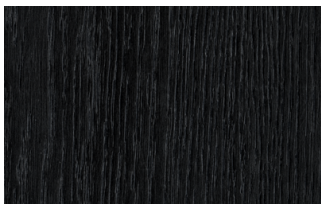
Oak cenere



Oak castoro



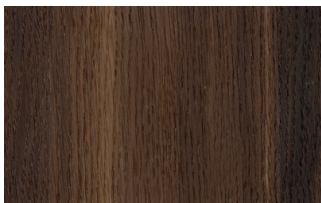
Natural oak



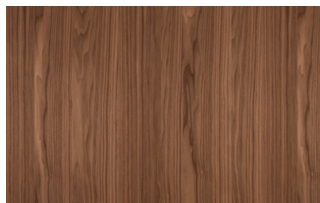
Oak carbone

#### WOODS 2

##### Woods 2



Heat-treated oak



Canaletto Walnut

### Fabrics

#### BASIC

##### X370

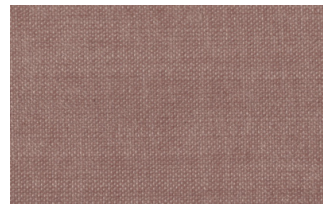




3



4



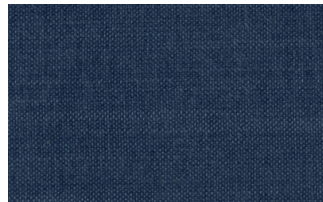
9



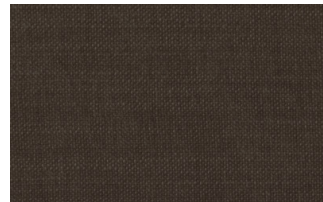
10



23



29



32

## Relax



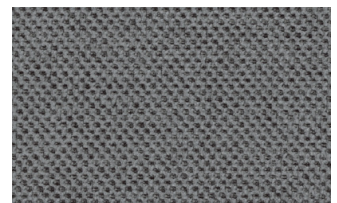
5



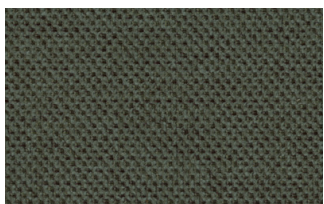
20



25



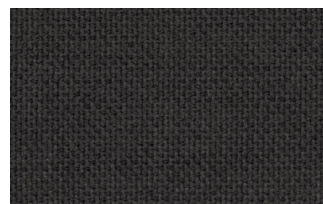
53



62



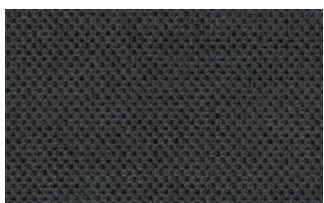
66



74



81

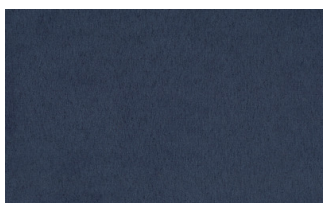


96

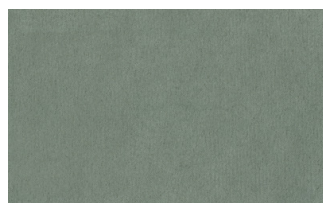


103

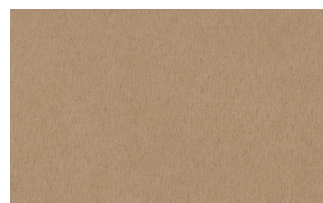
## Divina



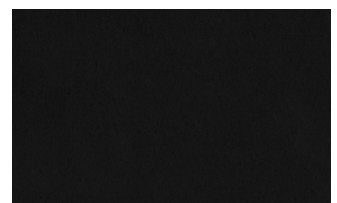
15



19



21



22





34



46



49



50



76



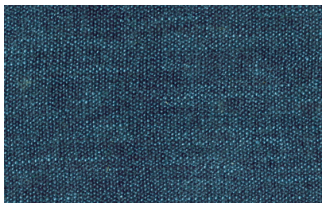
88



561

## START

### Scoop



6



7



9



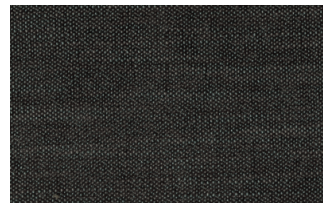
25



31



59

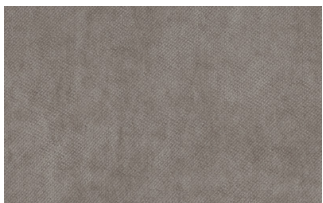


104



561

### Stropiccio



4



6



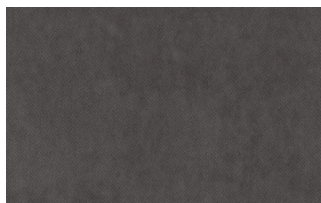
8



17



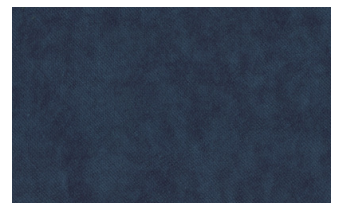
19



20



22



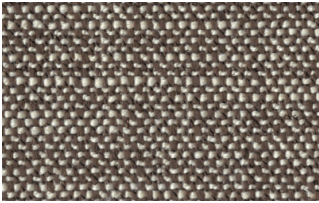
23



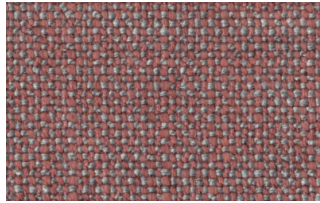


30

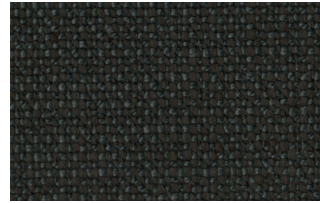
## Nodone



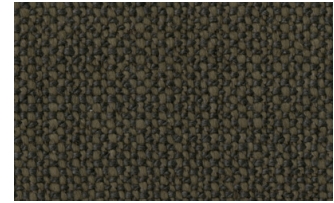
1302



1307



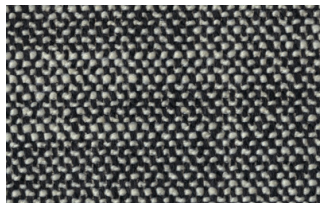
1308



1309



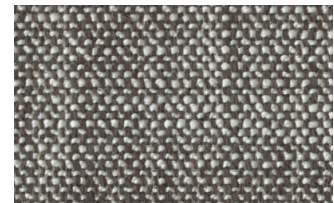
1310



1311



1313



1314

## R Flair



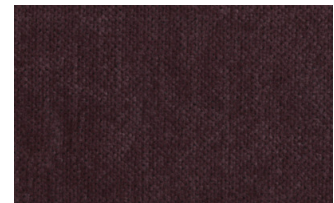
P321-6200-039



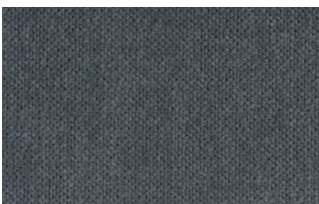
P321-6200-901



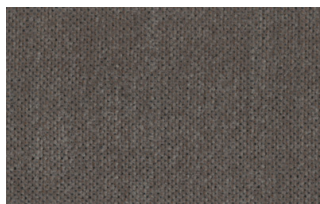
P321-6300-419



P321-6300-503



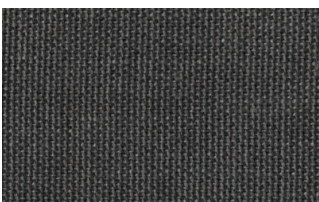
P321-6300-988



P321-6300-996

## EXTRA

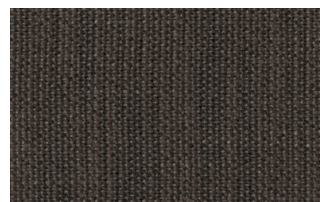
### Anice



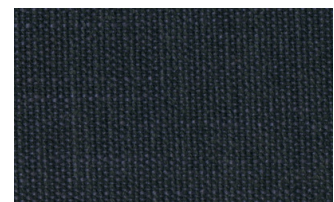
1



2

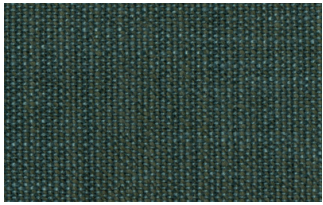


3

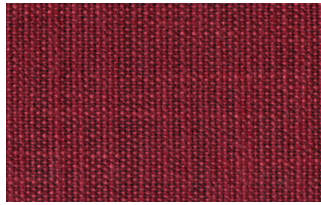


4

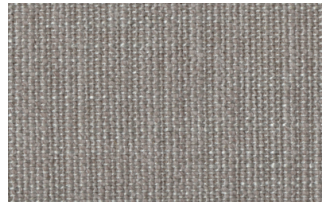




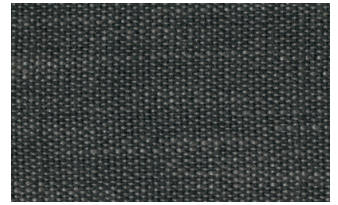
5



6



7

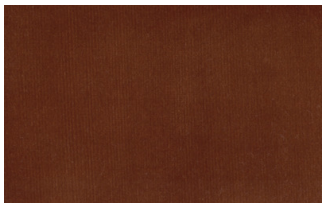


8

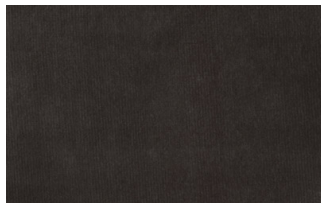


9

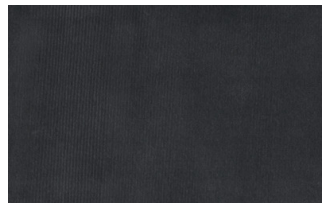
## Lovely



6



10



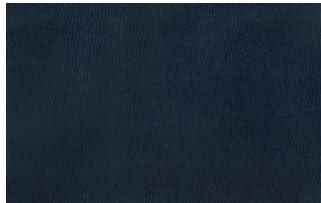
19



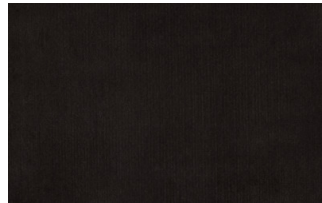
22



27



31



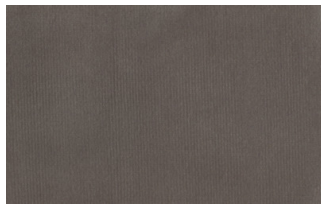
36



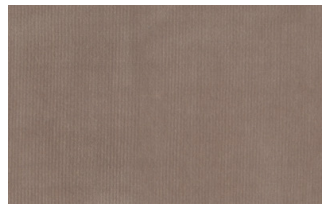
102



113

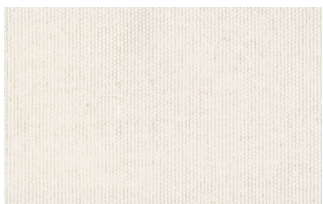


200



202

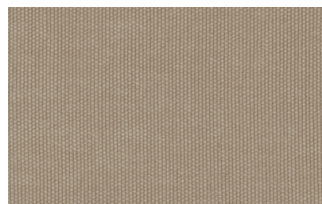
## Cosme



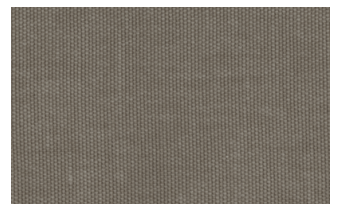
e200



e202

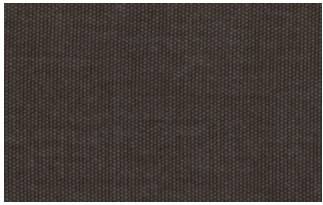


e205

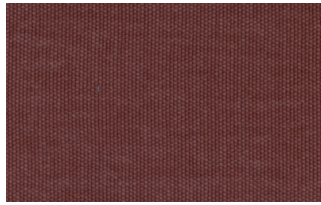


e206

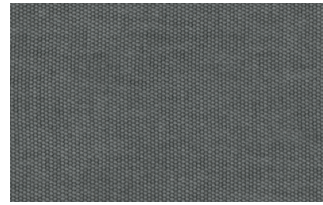




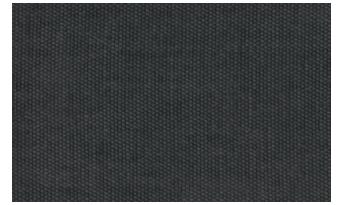
e209



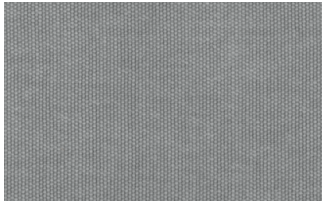
e220



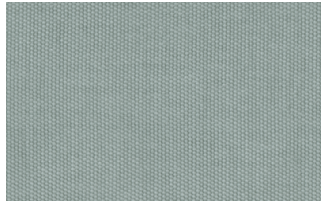
e232



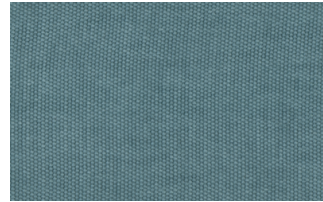
e234



e236



e240

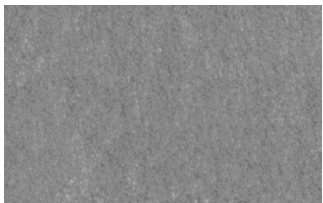


e241



e244

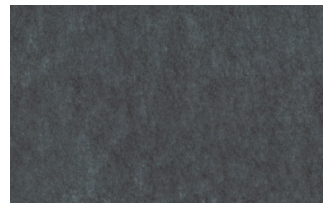
## Soda



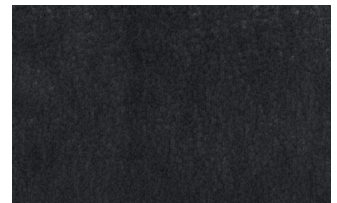
29



30



39



41



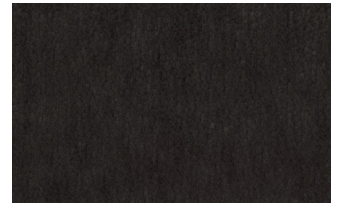
56



62



74



104

## LIGHT

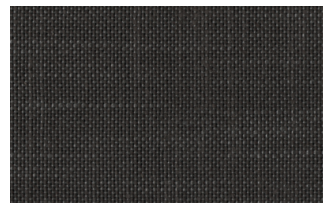
### Lima



2



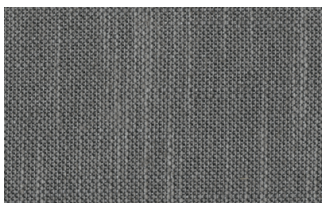
5



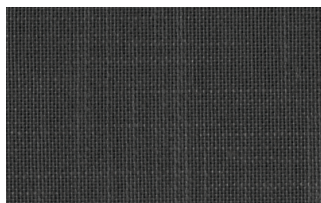
10



12



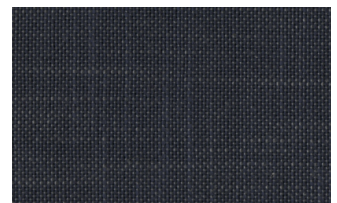
14



16

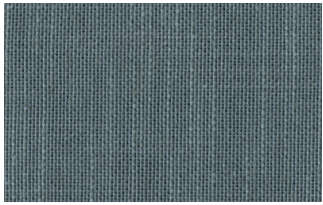


23

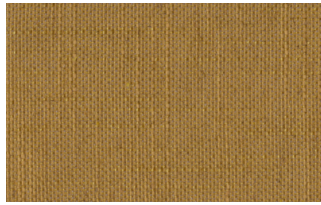


29





31



43

## Mimi



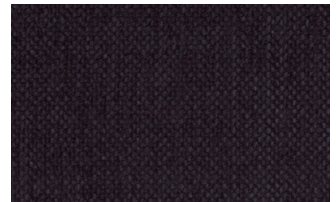
A3004



A3005



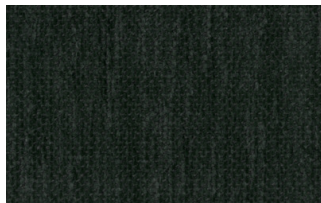
A3006



A3014



A3018

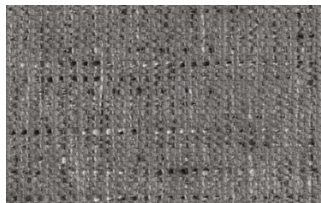


A3023

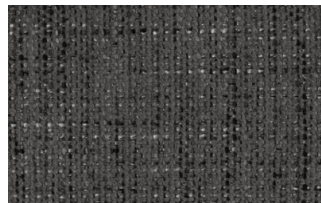
## Memphis



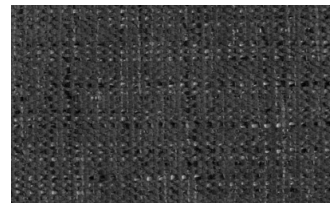
1



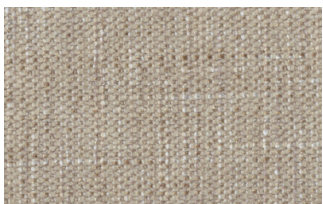
6



10



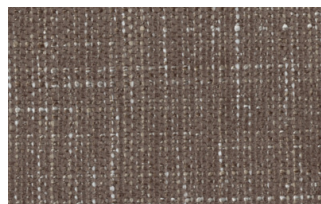
11



13



14



15



16

## SUPER

### Hylemt



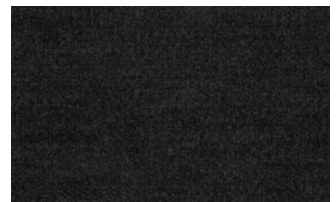
25



102

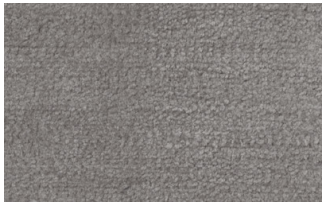


109



117

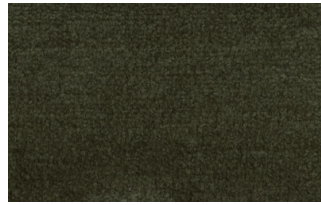




121



204



207

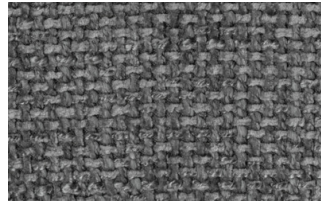
## Axum



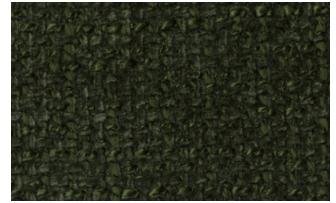
3



11



12



18



21



23



29



30

## Barnum Unito



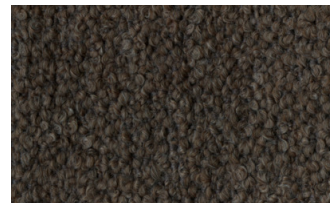
1 bianco



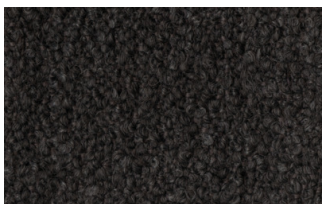
2 corda



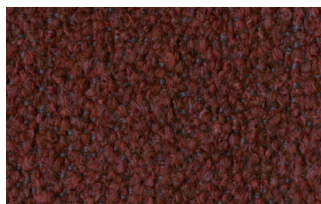
9 bosco



10 piombo



13 lavagna



23 bruciato



24 lana

# Leathers

## K LEATHERS

Leather





200



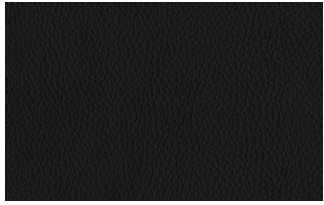
202



204



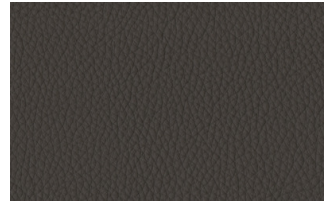
206



207



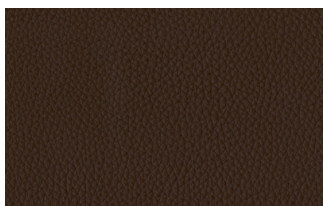
208



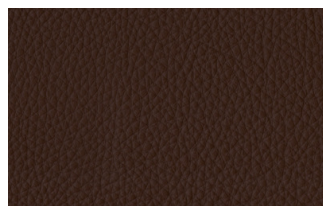
211



214



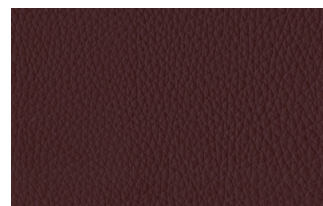
217



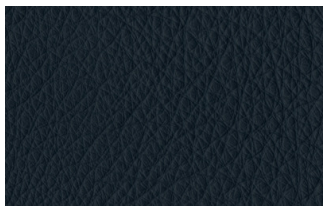
224



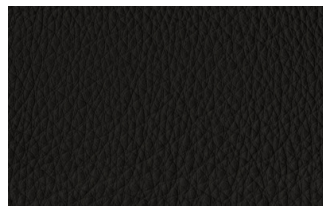
228



234



274



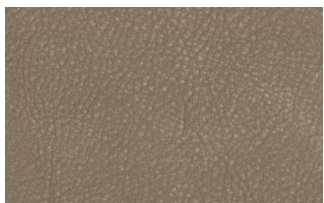
298



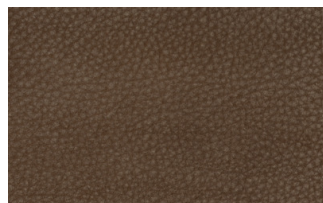
301

## W LEATHERS

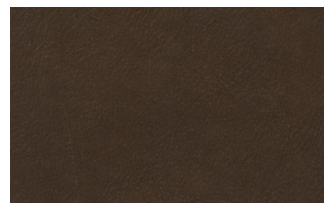
### Nabuk



Creta



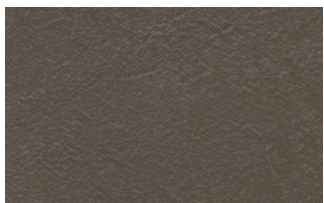
Camel



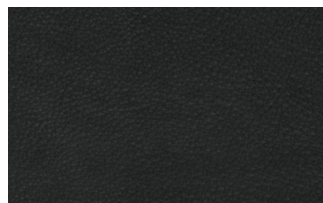
marrone



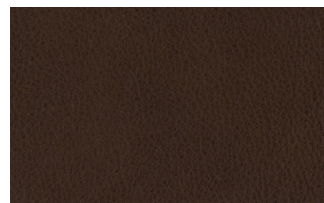
Testa di moro



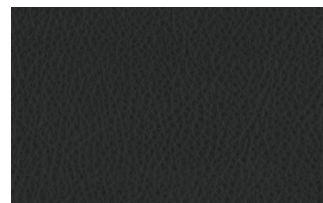
Seppia



Black



Hard leather



Grigio

## EXTRA ECO-LEATHERS

### Vintage eco-leather



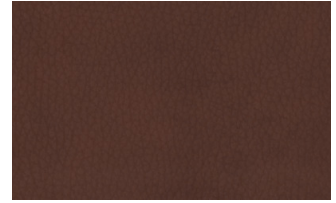
2



3



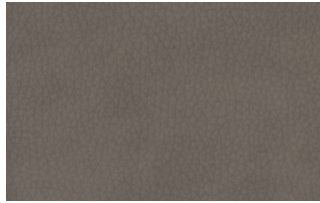
3 intreccio



4



6



7



7 intreccio



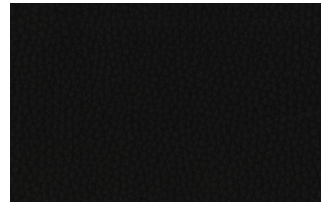
8



8 intreccio



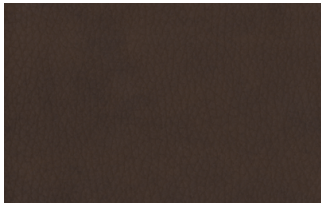
9



14



19



22