

Armchairs

# Dafne

Dafne is a Scandinavian-style armchair with a beech wood base and upholstery with Italian flair, selected from the wide variety of Dall'Agnese's range. The chosen design is especially enhanced by the wide-weave fabrics.



## ARMCHAIR WITH COMFORTABLE ARMRESTS

The Dafne armchair features wide and comfortable armrests, upholstered and supported by a wooden base. You can choose to upholster the armchair in leather, faux leather or fabric, while the support can be dyed in the various oak finishes, which promote optimal matches in any type of furniture.



# FINISHES

There are many finishes available to you for upholstering the Dafne armchair. Our recommendation? A wide-weave finish for comfort that stimulates tactile sensations.

## Fabrics

### BASIC

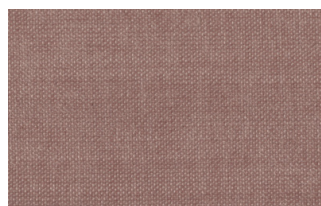
#### X370



3



4



9



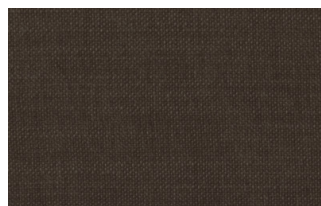
10



23

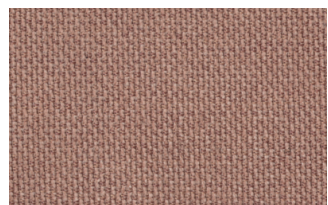


29

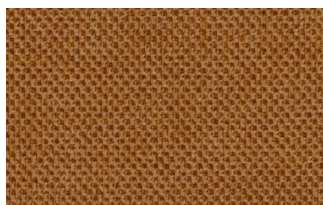


32

### Relax



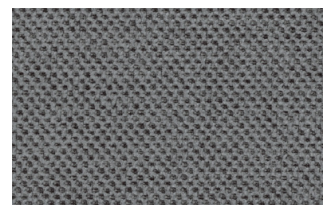
5



20



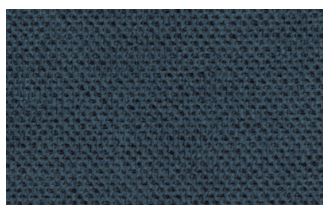
25



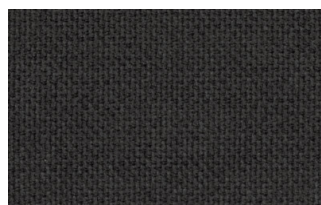
53



62



66



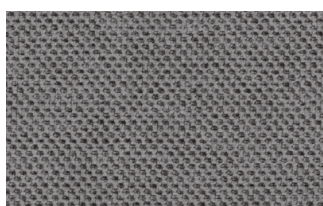
74



81



96



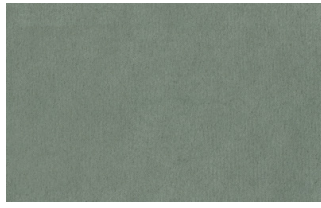
103



## Divina



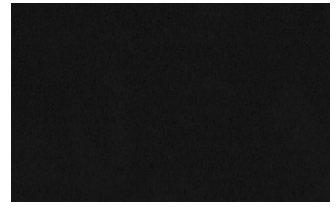
15



19



21



22



34



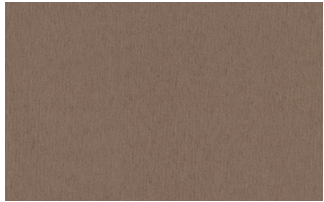
46



49



50



76



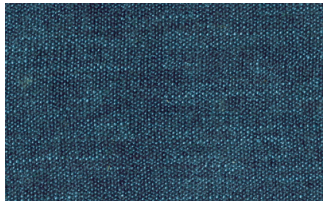
88



561

## START

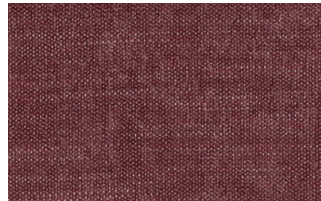
### Scoop



6



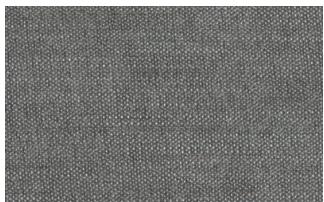
7



9



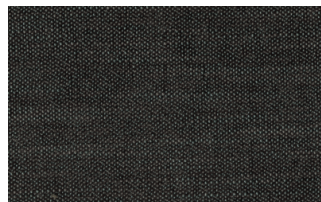
25



31



59

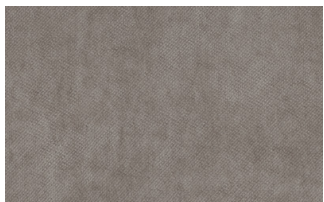


104



561

### Stropiccio



4



6

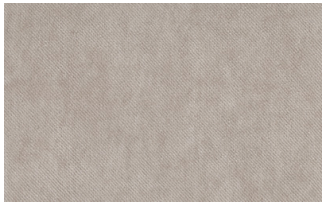


8



17

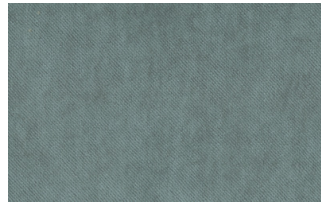




19



20



22

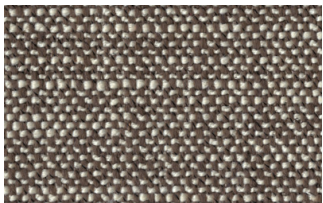


23

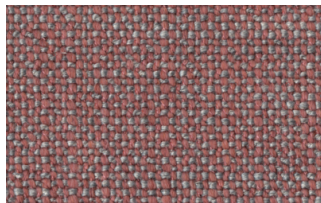


30

## Nodone



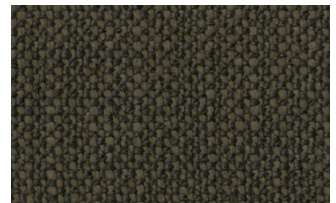
1302



1307



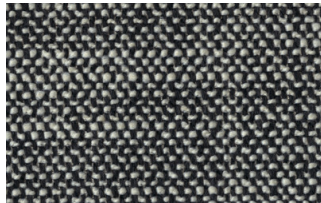
1308



1309



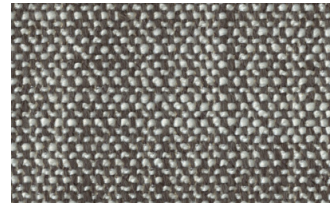
1310



1311



1313



1314

## R Flair



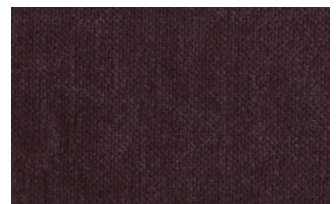
P321-6200-039



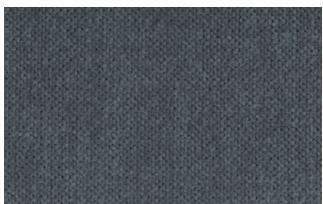
P321-6200-901



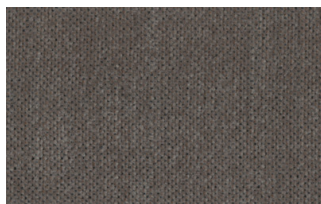
P321-6300-419



P321-6300-503



P321-6300-988

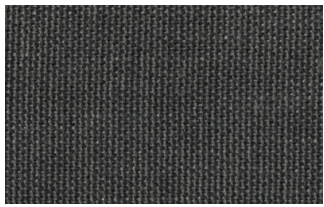


P321-6300-996

## EXTRA

### Anice





1



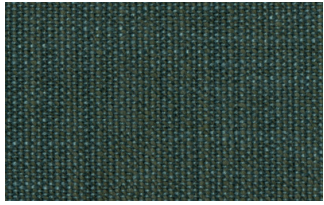
2



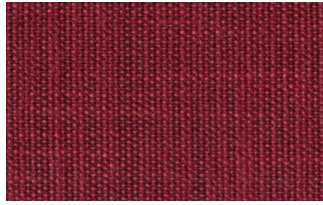
3



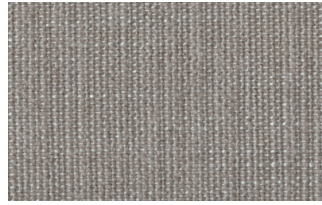
4



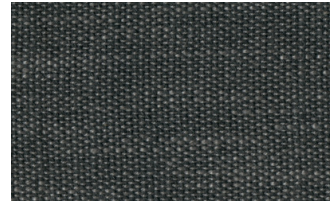
5



6



7



8

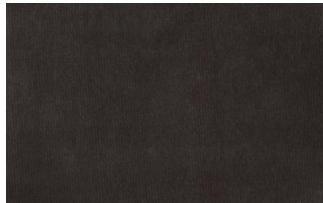


9

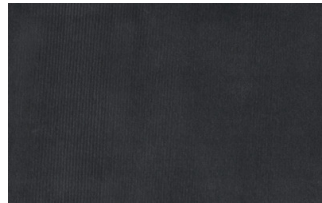
## Lovely



6



10



19



22



27



31



36



102



113



200



202

## Cosme

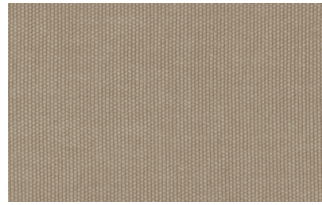




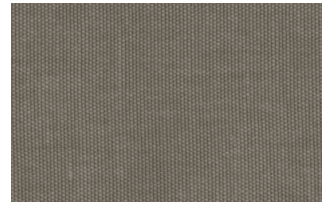
e200



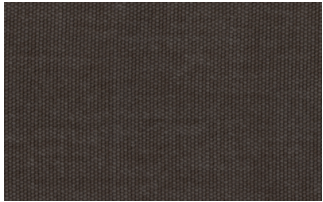
e202



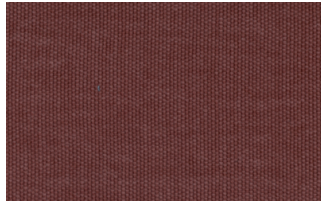
e205



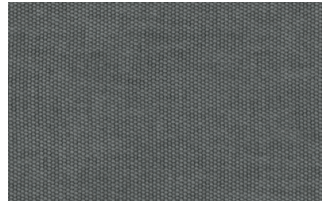
e206



e209



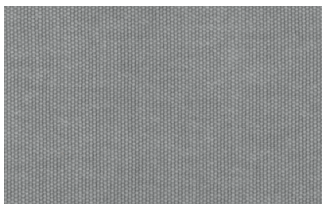
e220



e232



e234



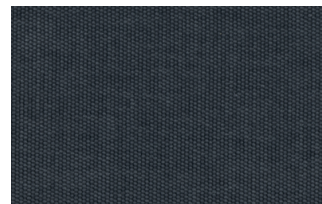
e236



e240

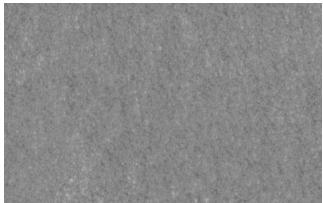


e241



e244

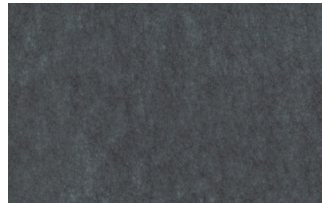
## Soda



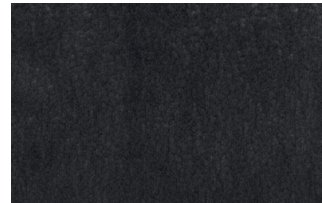
29



30



39



41



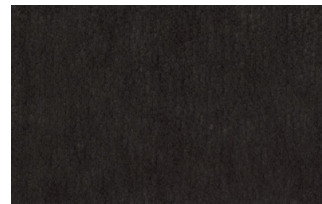
56



62



74



104

## LIGHT

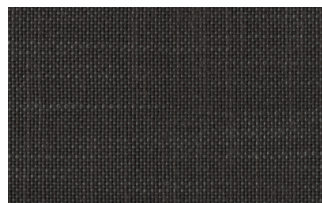
### Lima



2



5

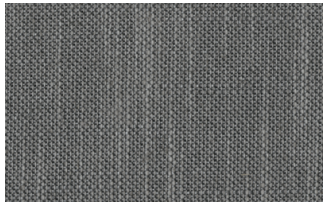


10



12

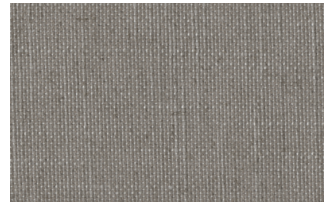




14



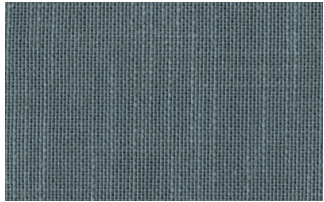
16



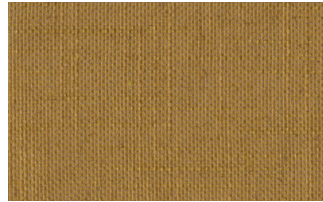
23



29



31

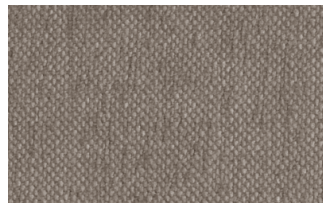


43

## Mimi



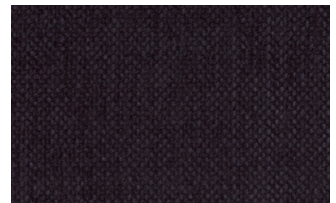
A3004



A3005



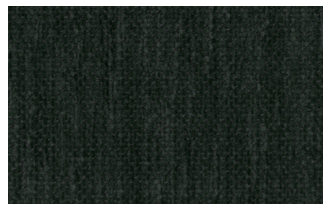
A3006



A3014



A3018

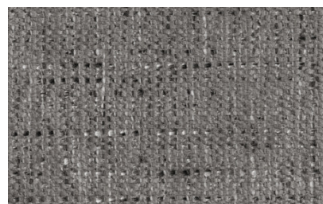


A3023

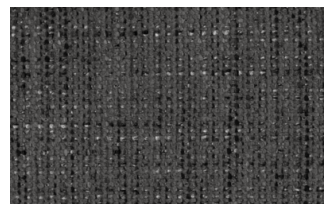
## Memphis



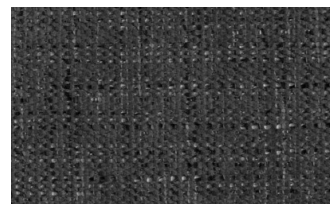
1



6



10



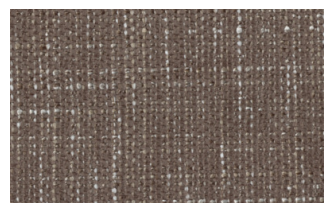
11



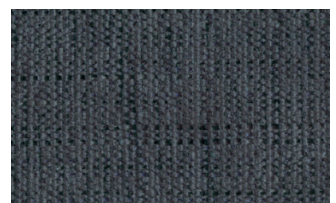
13



14



15



16

## SUPER

Hylemt





25



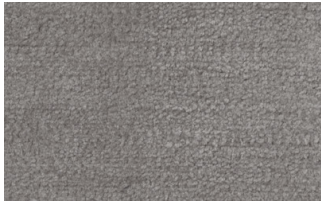
102



109



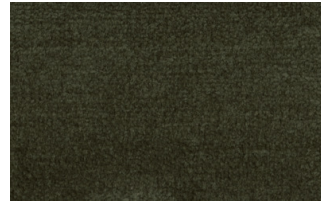
117



121



204



207

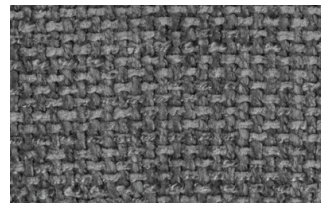
## Axum



3



11



12



18



21



23



29



30

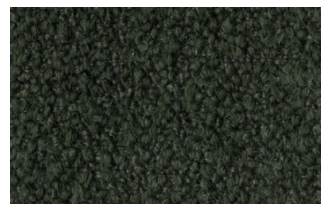
## Barnum Unito



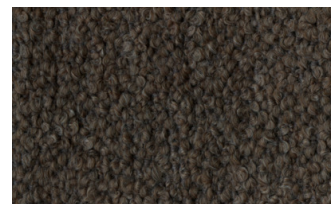
1 bianco



2 corda



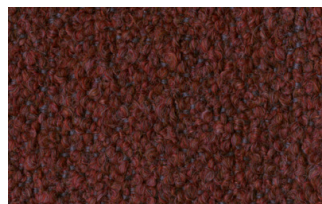
9 bosco



10 piombo



13 lavagna



23 bruciato



24 lana

## Leathers



## K LEATHERS

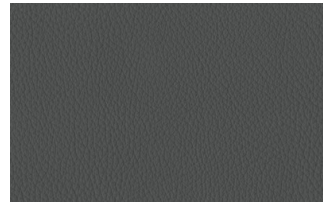
### Leather



200



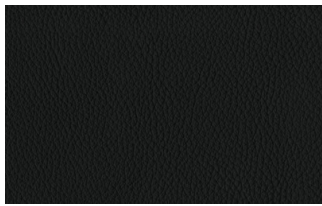
202



204



206



207



208



211



214



217



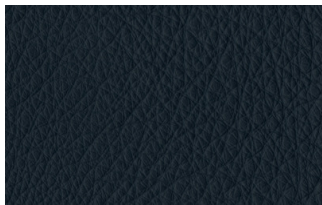
224



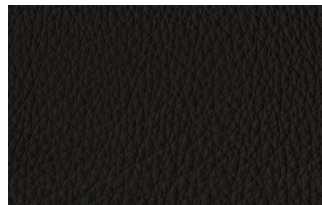
228



234



274



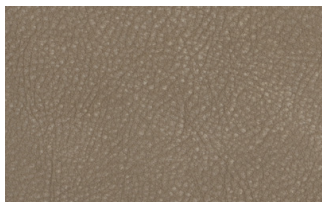
298



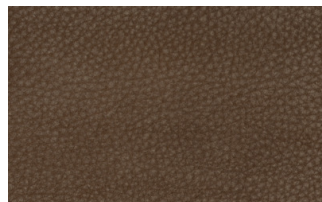
301

## W LEATHERS

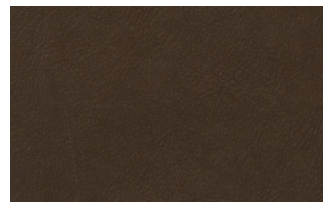
### Nabuk



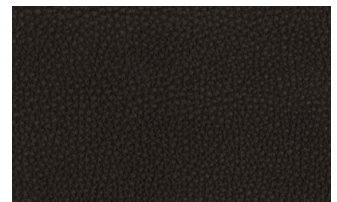
Creta



Camel



marrone

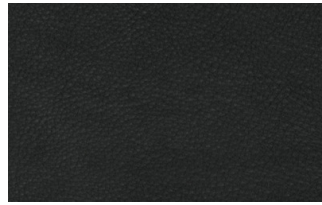


Testa di moro





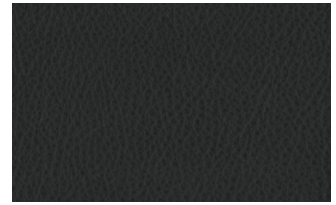
Seppia



Black



Hard leather



Grigio

## Ecoleathers

### EXTRA ECO-LEATHERS

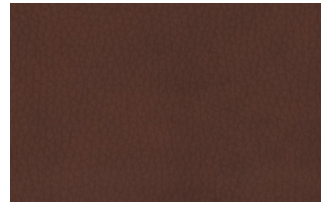
#### Vintage eco-leather



2



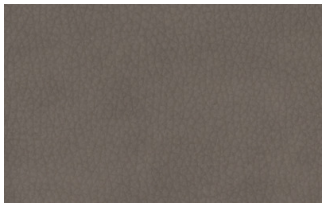
3



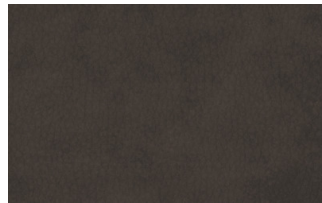
4



6



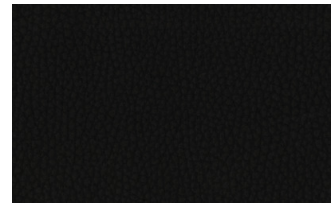
7



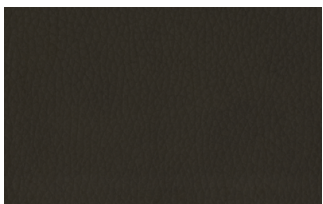
8



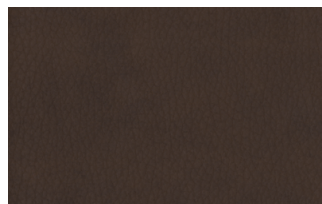
9



14



19



22