

Poltrone

# Planka

La poltrona Planka nasce da un poggiatesta ben imbottito che ha fatto strada e si è munito di schienale, anzi di due opzioni di schienale, una bassa, l'altra alta. Ha linee avvolgenti e forme comode, rette da minuscoli piedini che quasi scompaiono alla vista.



## POLTRONA IN TESSUTO, PELLE, ECOPELLE

Puoi rivestire la poltrona Planka, con poggiatesta coordinato o anche senza, in tutta la gamma finiture, selezionate da Dall'Agnese per i tessuti, le pelli e le ecopelli, e decidere la dimensione del suo schienale. C'è la versione comoda a mezza schiena e quella alta, davvero avvolgente.



# FINITURE

Scopri le finiture disponibili per la tua poltrona Planka, comoda e avvolgente. Sono state selezionate nella gamma Dall'Agnese dei tessuti, delle pelli e delle ecopelli.

## Tessuti

### BASIC

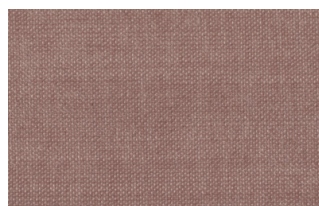
#### X370



3



4



9



10



23

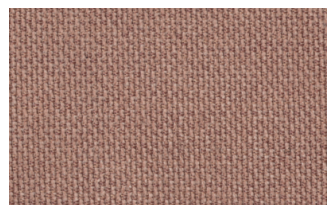


29

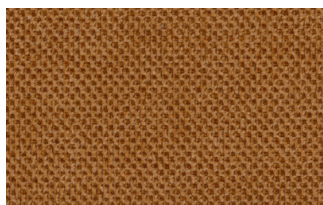


32

#### Relax



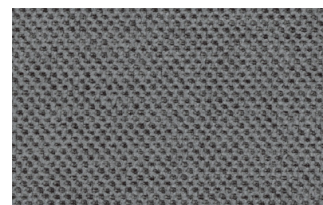
5



20



25



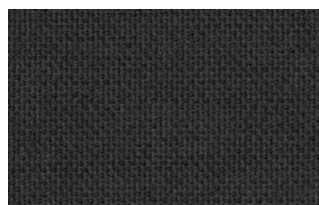
53



62



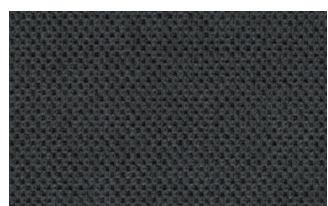
66



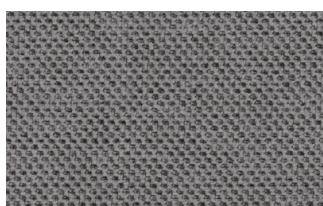
74



81



96

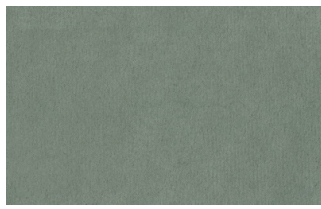


103

## Divina



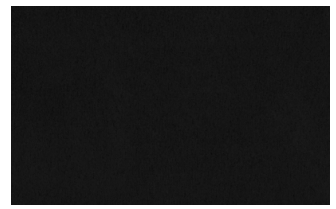
15



19



21



22



34



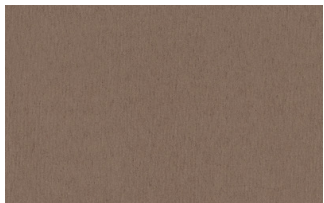
46



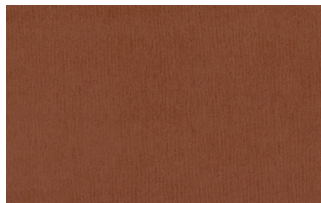
49



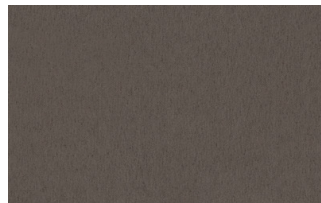
50



76



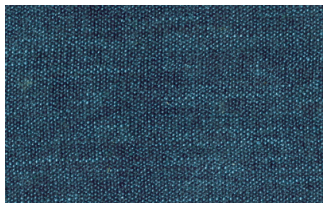
88



561

## START

### Scoop



6



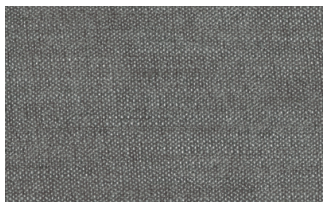
7



9



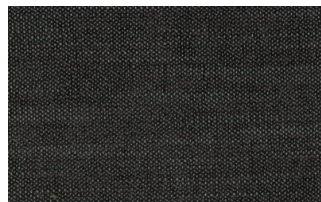
25



31



59



104



561

### Stropiccio



4



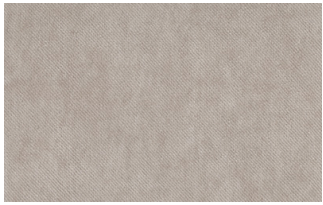
6



8



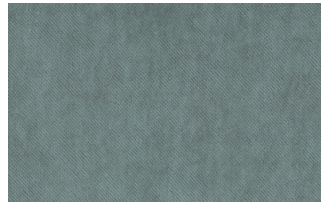
17



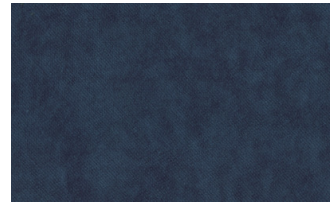
19



20



22

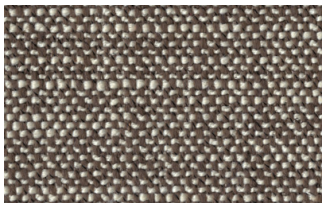


23

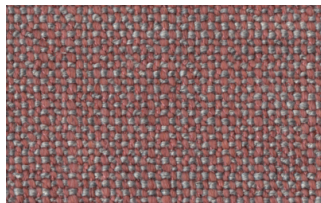


30

## Nodone



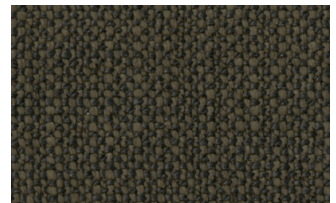
1302



1307



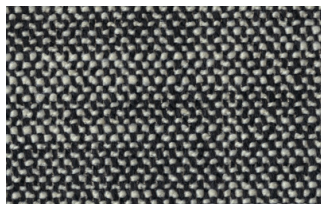
1308



1309



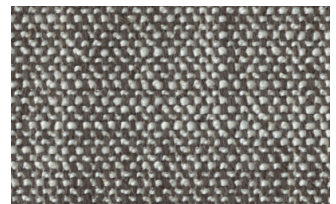
1310



1311



1313



1314

## R Flair



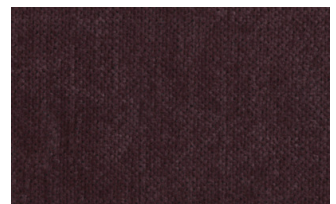
P321-6200-039



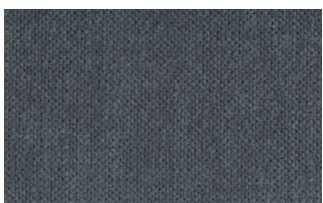
P321-6200-901



P321-6300-419



P321-6300-503



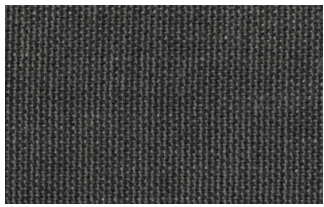
P321-6300-988



P321-6300-996

## EXTRA

### Anice



1



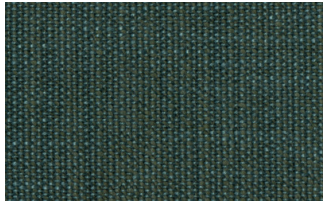
2



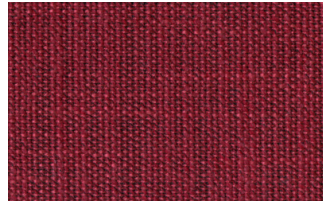
3



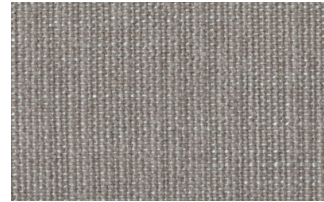
4



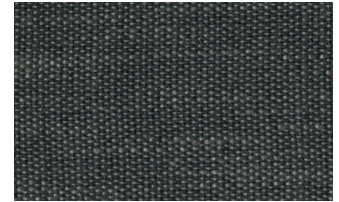
5



6



7

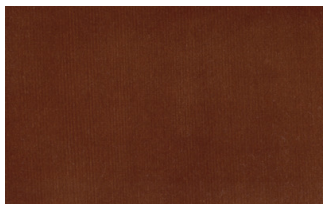


8

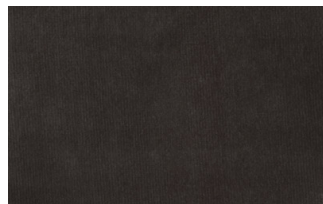


9

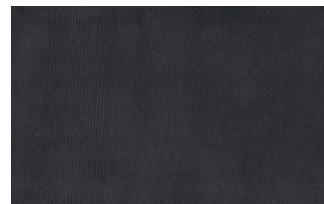
## Lovely



6



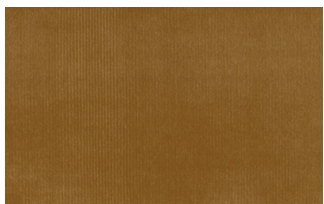
10



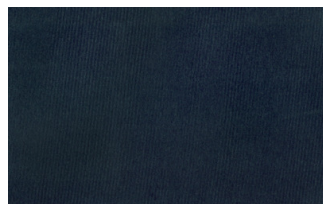
19



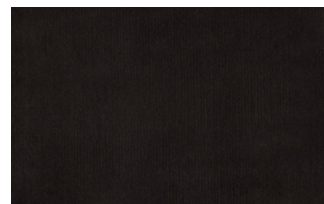
22



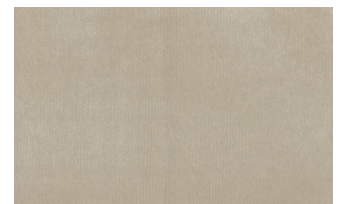
27



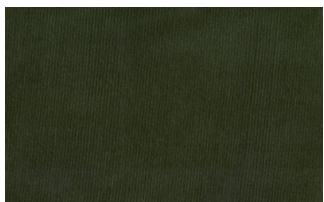
31



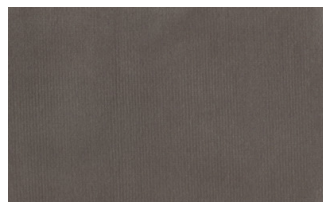
36



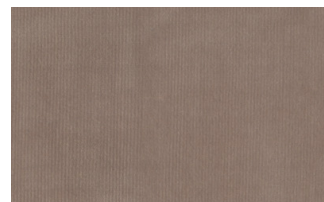
102



113



200



202

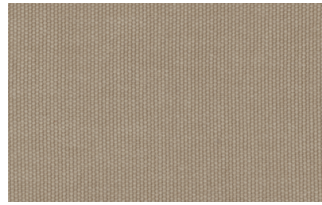
## Cosme



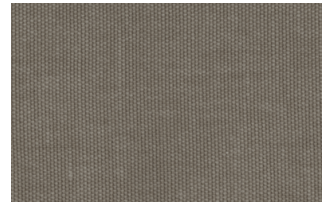
e200



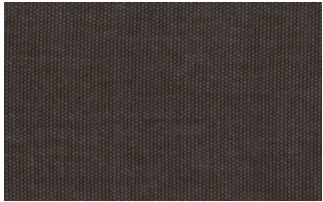
e202



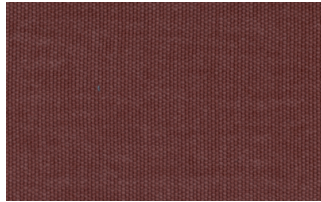
e205



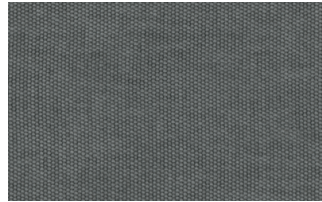
e206



e209



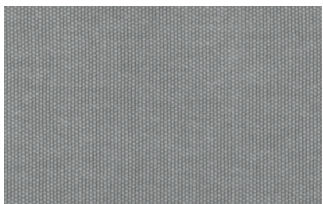
e220



e232



e234



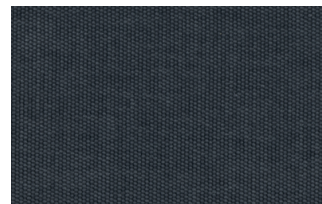
e236



e240

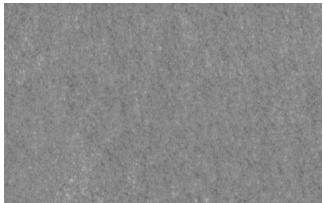


e241



e244

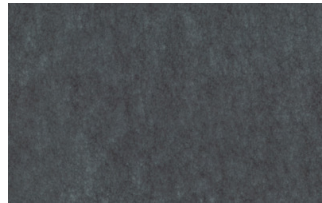
## Soda



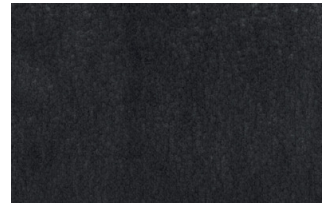
29



30



39



41



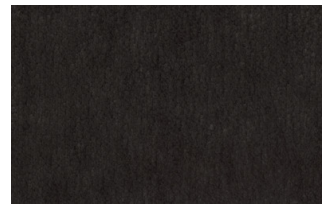
56



62



74



104

## LIGHT

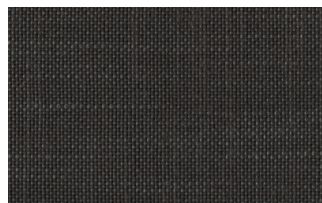
### Lima



2



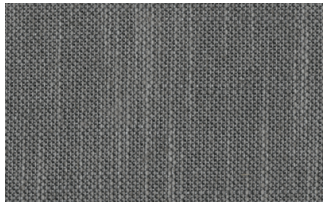
5



10



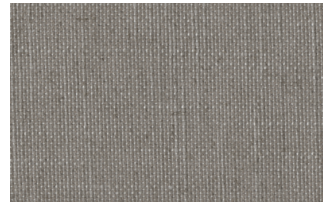
12



14



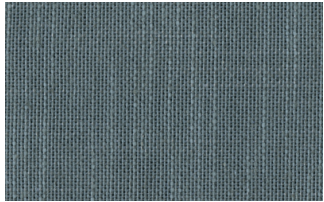
16



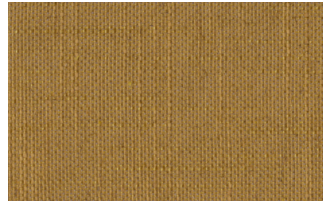
23



29



31

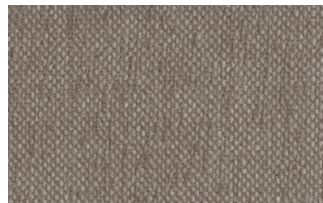


43

## Mimi



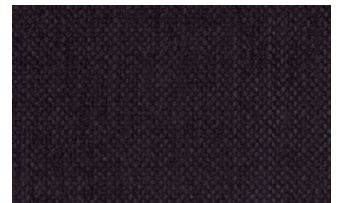
A3004



A3005



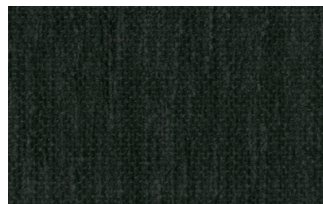
A3006



A3014



A3018

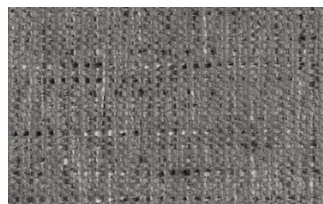


A3023

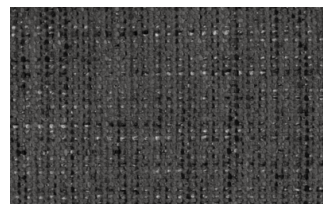
## Memphis



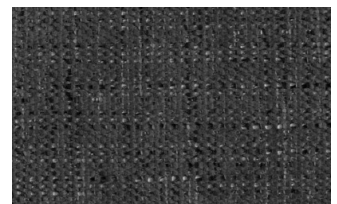
1



6



10



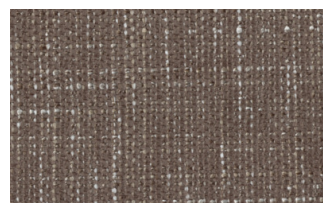
11



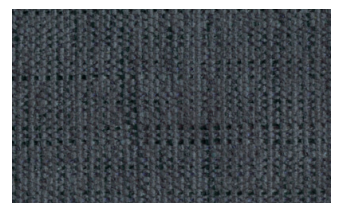
13



14



15



16

## SUPER

### Hylemt





25



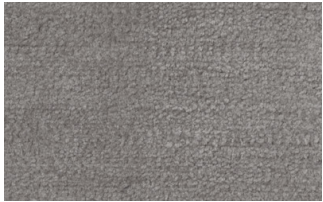
102



109



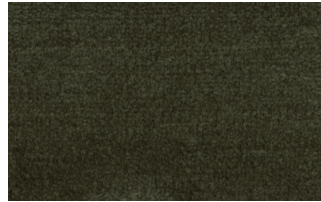
117



121



204



207

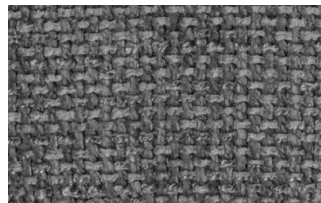
## Axum



3



11



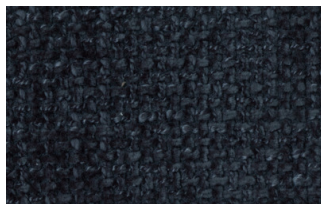
12



18



21



23



29



30

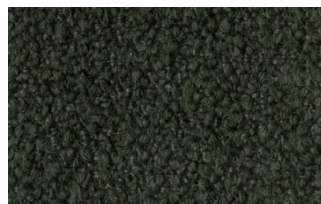
## Barnum Unito



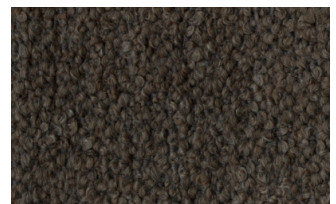
1 bianco



2 corda



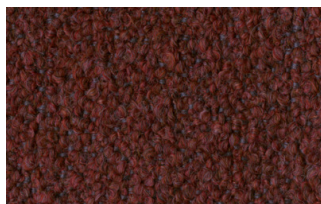
9 bosco



10 piombo



13 lavagna



23 bruciato



24 lana

## Pelli

## PELLI K

### Pelle



200



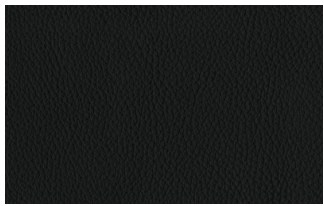
202



204



206



207



208



211



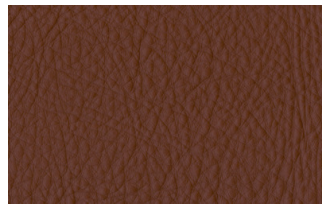
214



217



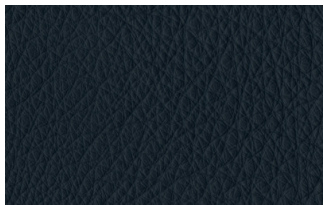
224



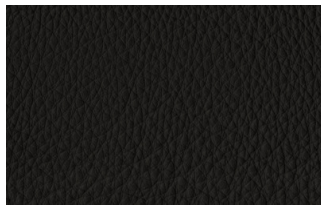
228



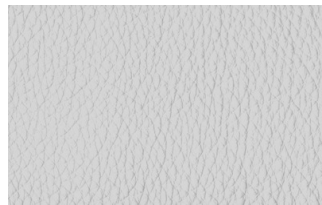
234



274



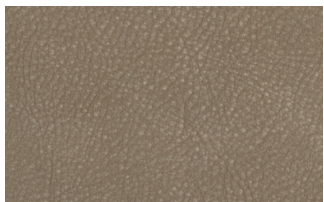
298



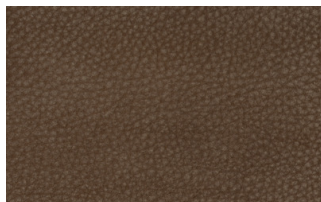
301

## PELLI W

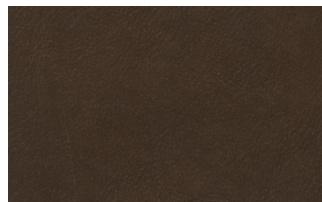
### Nabuk



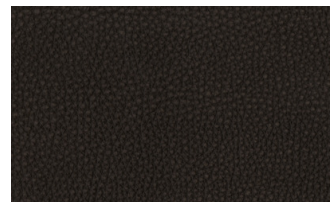
Creta



Camel



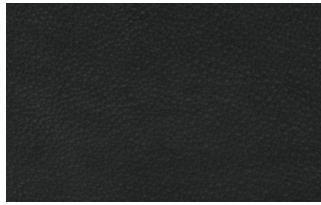
Marrone



Testa di moro



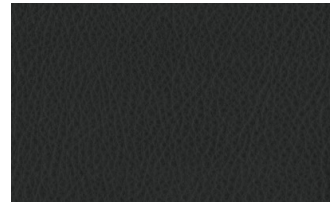
Seppia



Black



Cuoio



Grigio

## Ecopelli

### EXTRA ECOPELLI

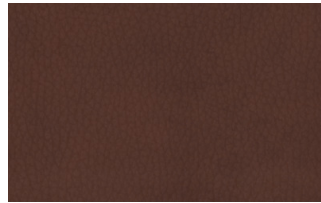
#### Fintapelle vintage



2



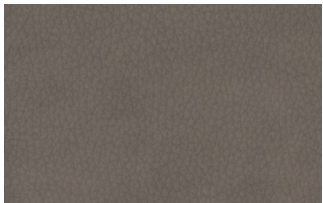
3



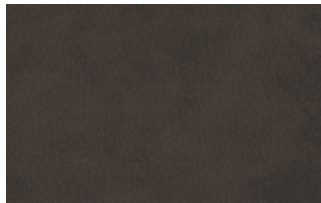
4



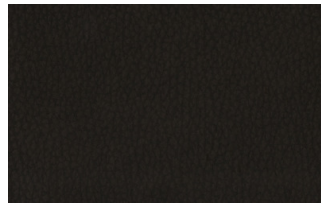
6



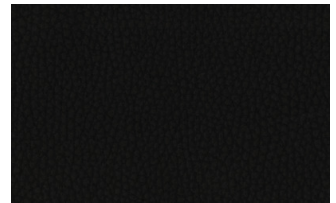
7



8



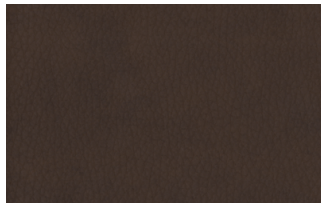
9



14



19



22