

Chairs

Supernova

The Supernova chair with its curved back is almost an armchair in its refinement, comfort and ability to accommodate those who sit. It belongs to a family, designed by Signorotto&Partners, cast in the refined and orderly atmosphere of the 1930s.



THE ELEGANCE OF METAL LEGS

In the Supernova chair, the rational lines of the metal rod legs, with rounded heads, rise up to the minimal and elegant sides. There they accommodate and support the backrest and leave the scene for the soft seat.



QUALITY DETAILS

In the Supernova chair, the two parts that make up the seat are upholstered separately and then assembled to ensure a snug fit. You can choose it in fabric, leather or eco-leather, even with different back and front materials and finishes.



FINISHES

With different front and back for the Supernova chair, you can play with fabric/fabric, fabric/eco-leather, fabric/woven eco-leather, or eco-leather/woven eco-leather.

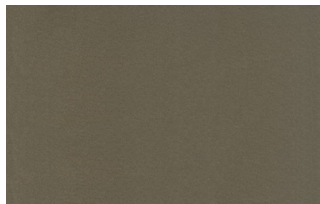
Metals

METALS 1

Metals 1



Black



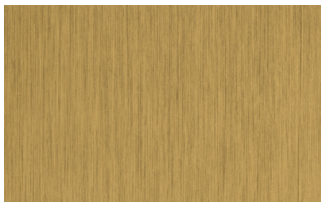
Titanium



Brown

METALS 2

Metals 2



Antiqued brass

Fabrics

BASIC

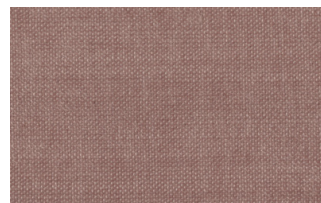
X370



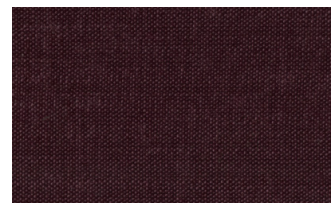
3



4



9



10



23

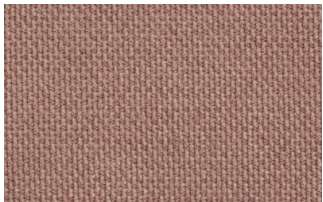


29

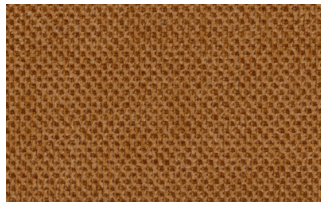


32

Relax



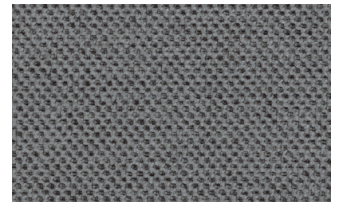
5



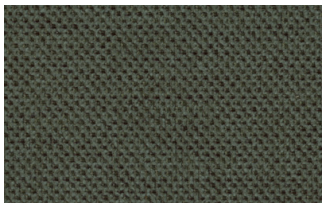
20



25



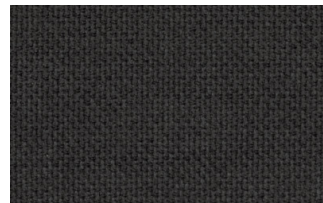
53



62



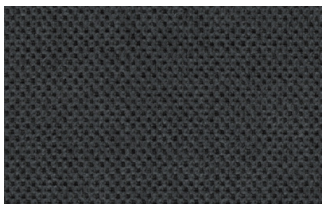
66



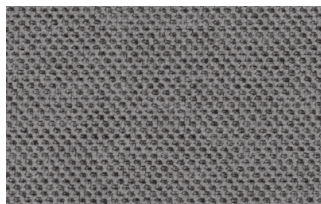
74



81

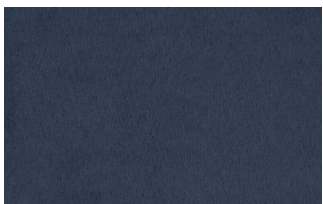


96



103

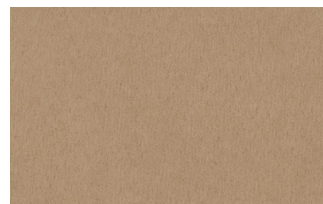
Divina



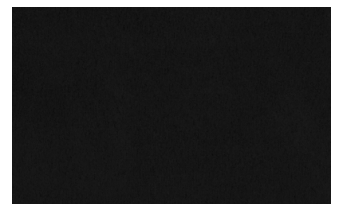
15



19



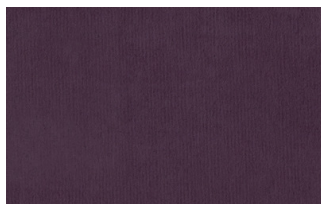
21



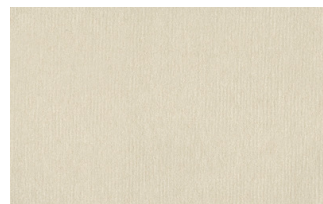
22



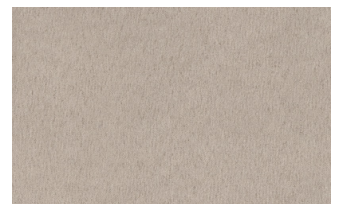
34



46



49



50



76



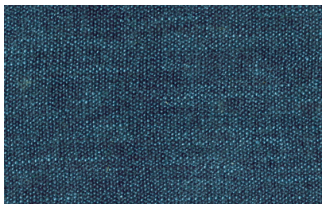
88



561

START

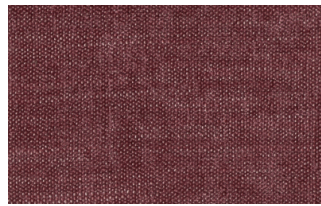
Scoop



6



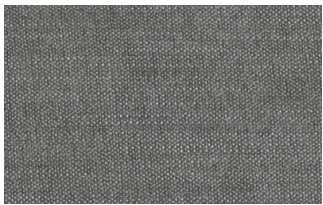
7



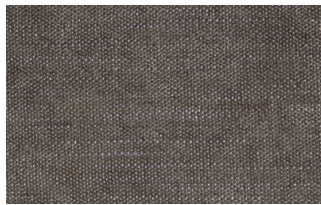
9



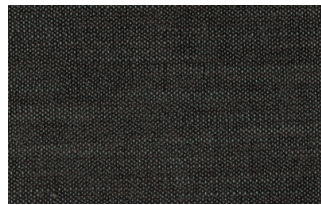
25



31



59

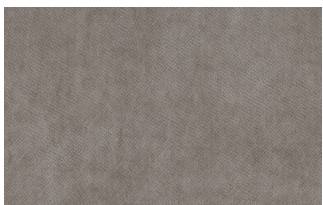


104



561

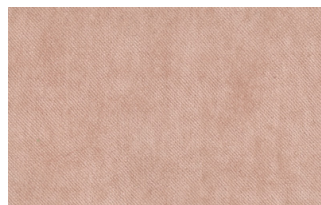
Stropiccio



4



6



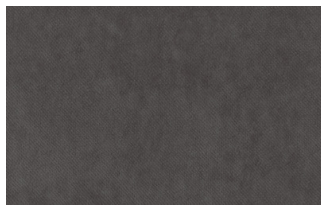
8



17



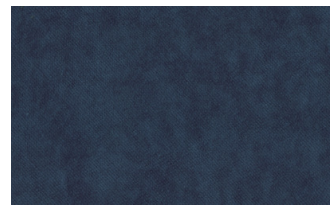
19



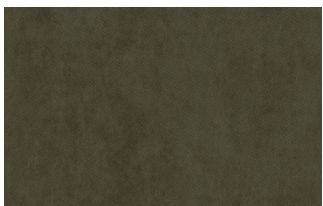
20



22

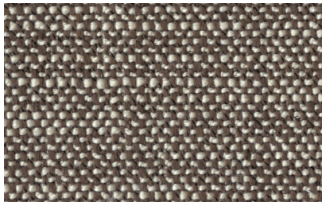


23

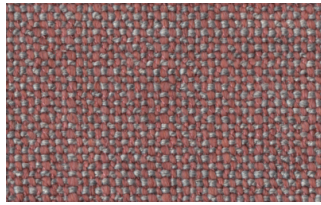


30

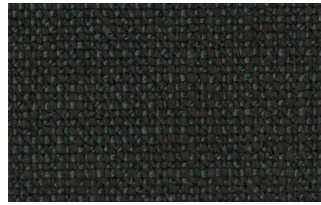
Nodone



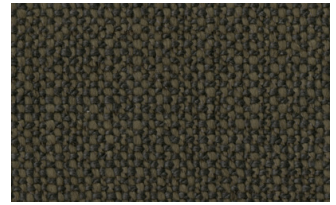
1302



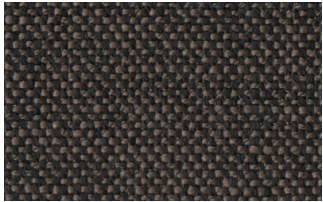
1307



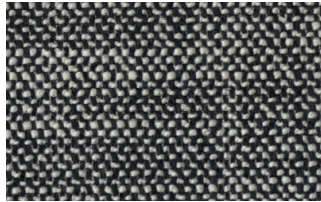
1308



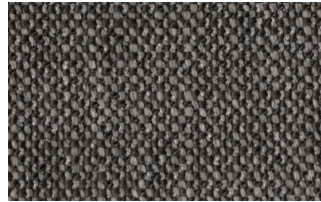
1309



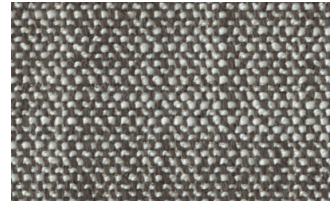
1310



1311



1313



1314

R Flair



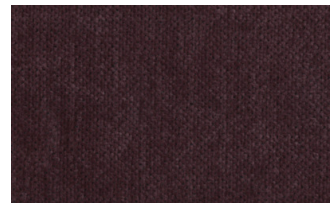
P321-6200-039



P321-6200-901



P321-6300-419



P321-6300-503



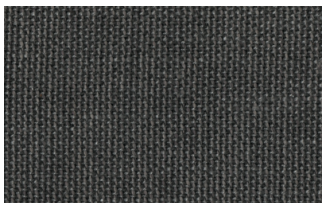
P321-6300-988



P321-6300-996

EXTRA

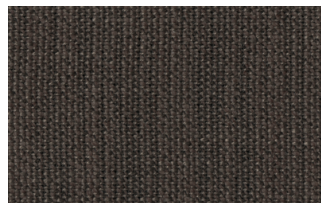
Anice



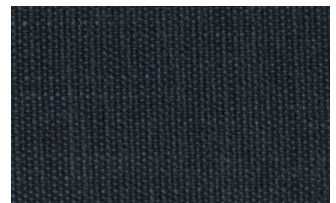
1



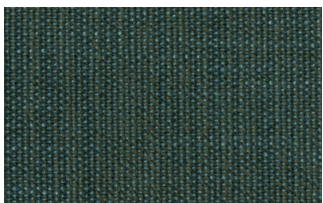
2



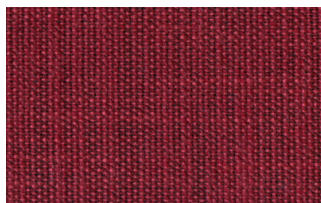
3



4



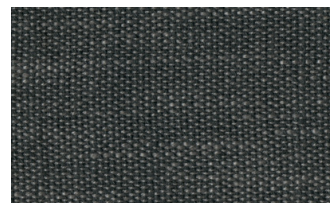
5



6



7



8



9

Lovely



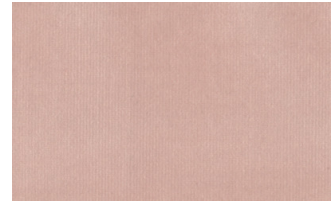
6



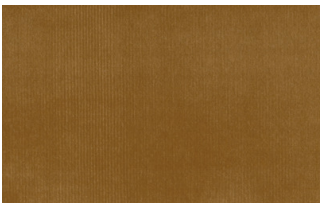
10



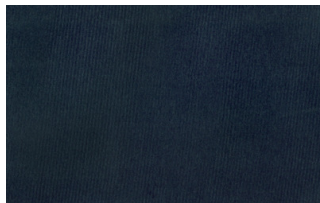
19



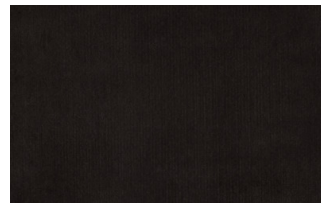
22



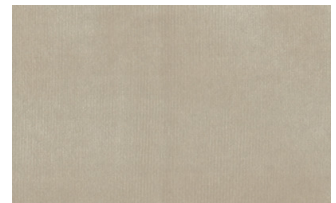
27



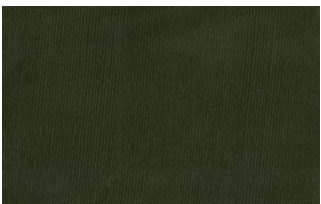
31



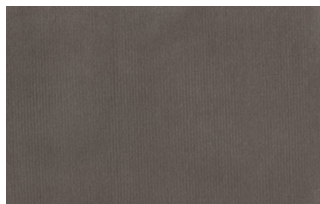
36



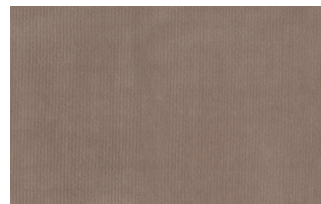
102



113

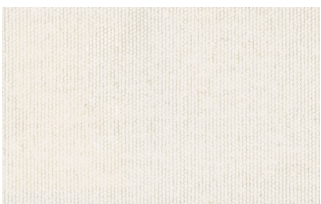


200

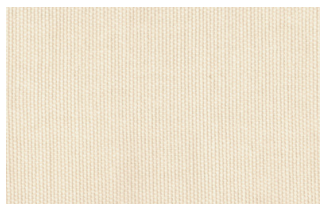


202

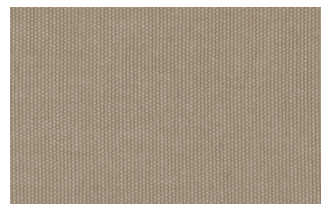
Cosme



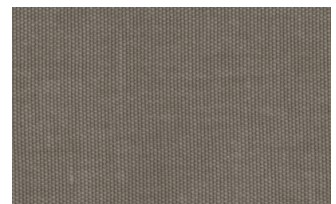
e200



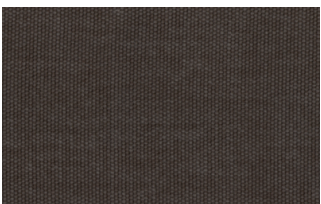
e202



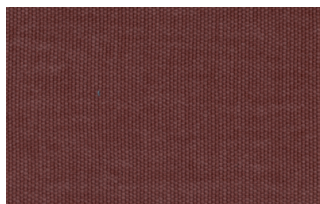
e205



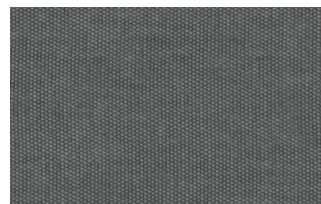
e206



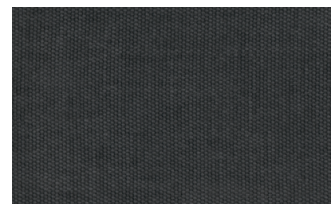
e209



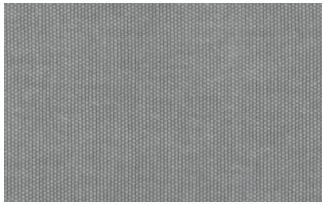
e220



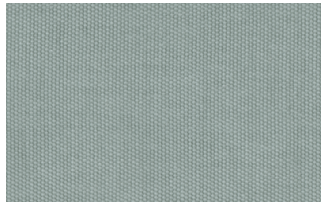
e232



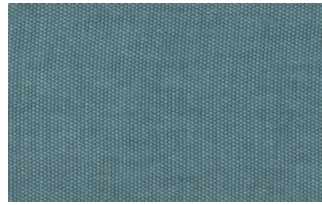
e234



e236



e240

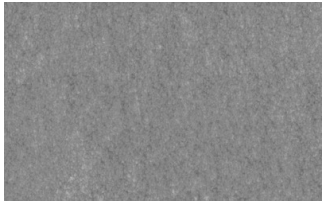


e241



e244

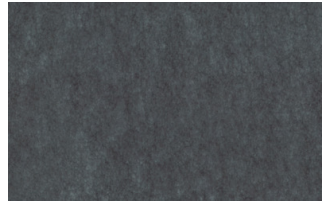
Soda



29



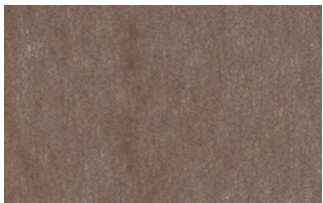
30



39



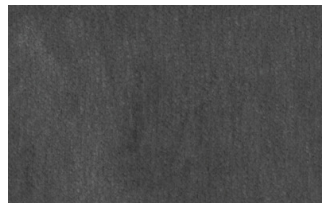
41



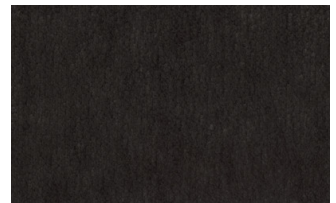
56



62



74



104

LIGHT

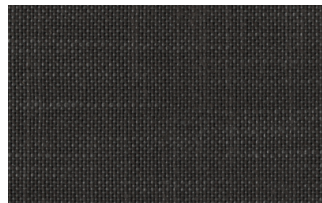
Lima



2



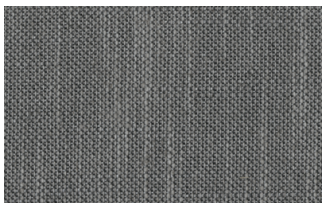
5



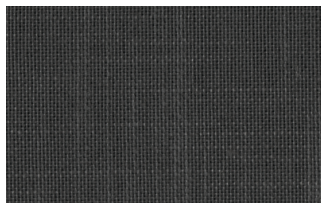
10



12



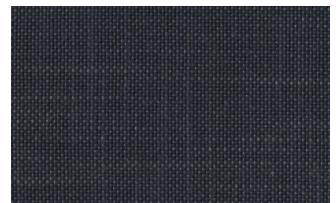
14



16



23



29



31

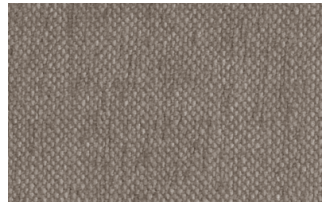


43

Mimi



A3004



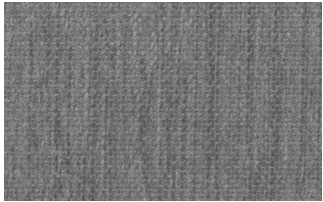
A3005



A3006



A3014



A3018

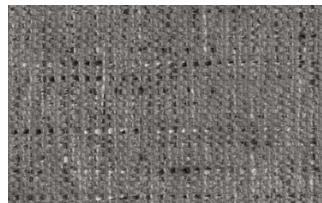


A3023

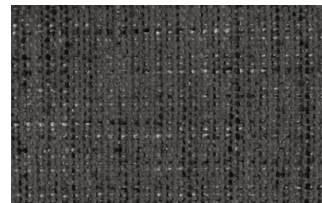
Memphis



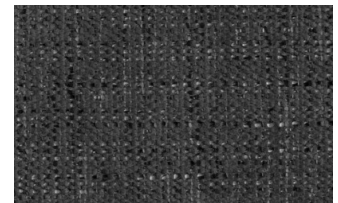
1



6



10



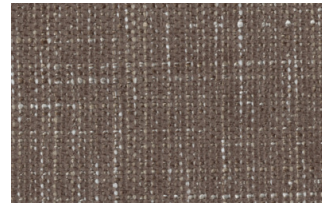
11



13



14



15



16

SUPER

Hylemt



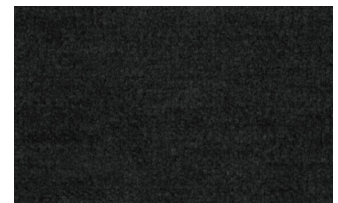
25



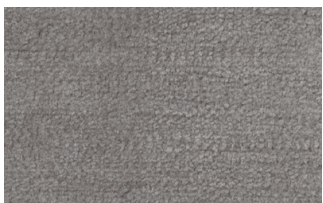
102



109



117



121



204

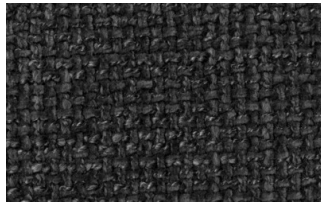


207

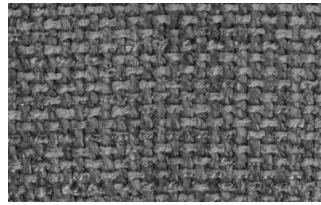
Axum



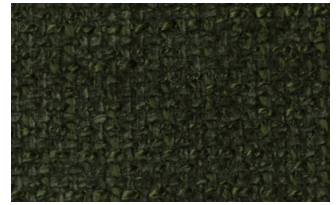
3



11



12



18



21



23



29



30

Barnum Unito



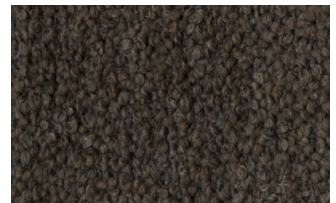
1 bianco



2 corda



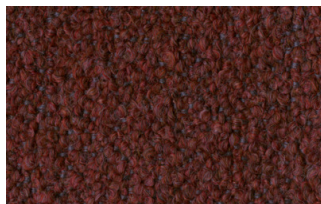
9 bosco



10 piombo



13 lavagna



23 bruciato

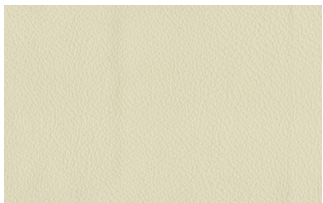


24 lana

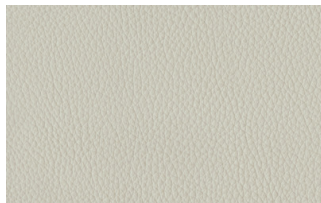
Leathers

K LEATHERS

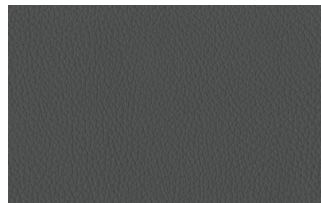
Leather



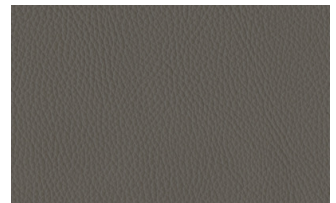
200



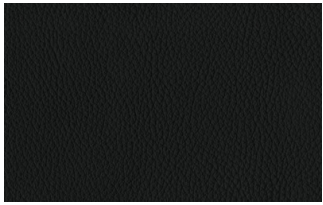
202



204



206



207



208



211



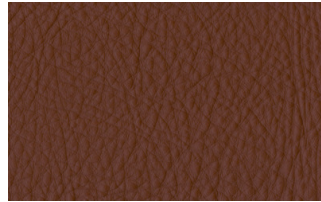
214



217



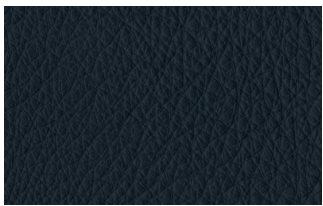
224



228



234



274



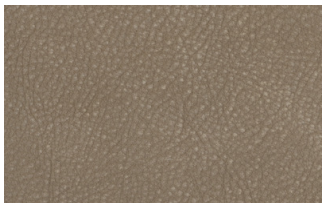
298



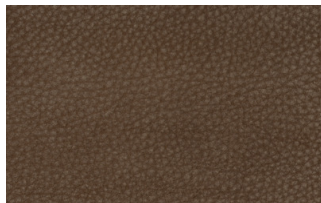
301

W LEATHERS

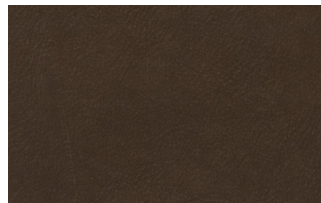
Nabuk



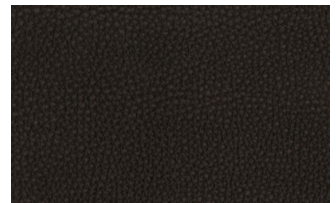
Creta



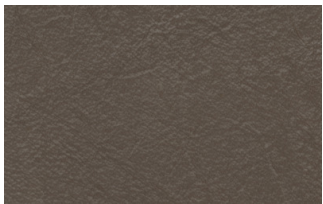
Camel



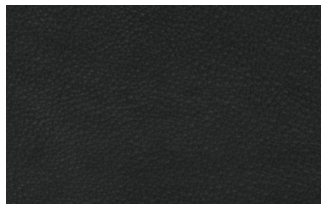
marrone



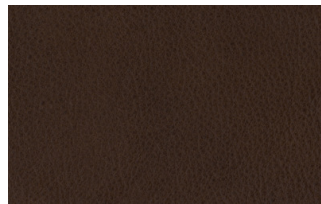
Testa di moro



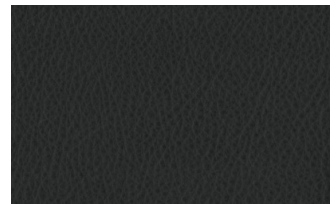
Seppia



Black



Hard leather



Grigio

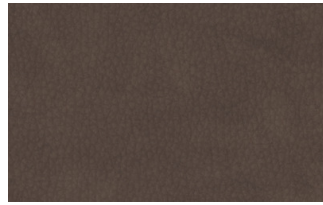
Ecoleathers

EXTRA ECO-LEATHERS

Vintage eco-leather



2



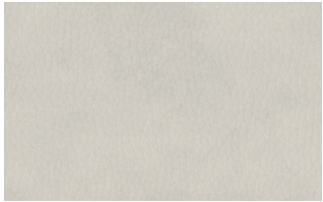
3



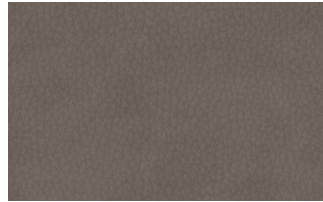
3 intreccio



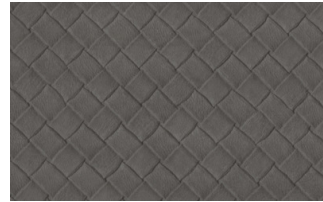
4



6



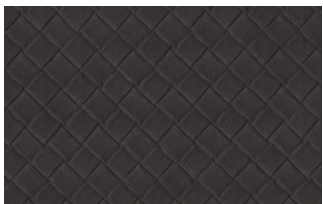
7



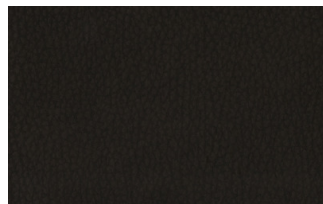
7 intreccio



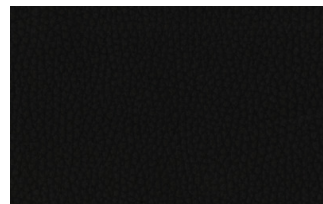
8



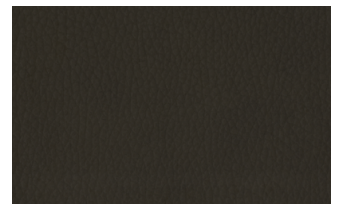
8 intreccio



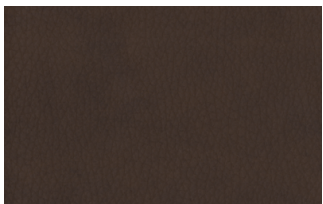
9



14



19



22