

Armchairs

Madame

Madame is a high-backed wraparound armchair with a refined taste and vintage design, just enough to make her look like a grand lady willing to chat. Comfort and relaxation assured.



COMFORTABLE AND ERGONOMIC ARMCHAIR WITH POUF

Comfortable and ergonomic, Madame envelops as if in a hug and optimally balances moments of relaxation, even more so if you choose to combine it with the matching footstool pouf. The central base is made of polished chrome-plated steel, swivel for the armchair, fixed for the footstool.



FINISHES

You have a wide selection of fabric, leather and faux leather covers with which to dress your Madame armchair and matching ottoman. Start discovering them right now!

Fabrics

BASIC

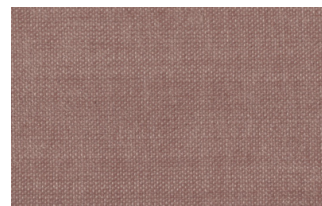
X370



3



4



9



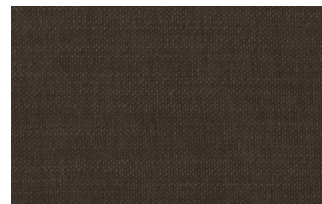
10



23

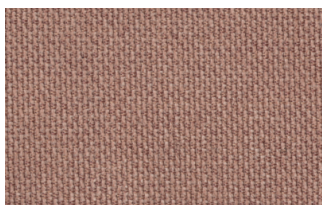


29

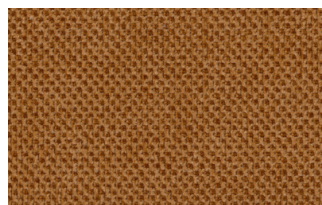


32

Relax



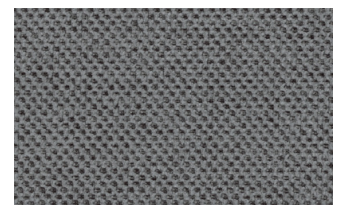
5



20



25



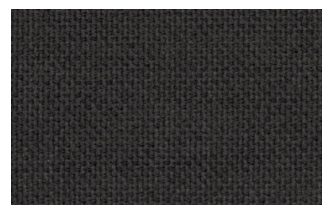
53



62



66



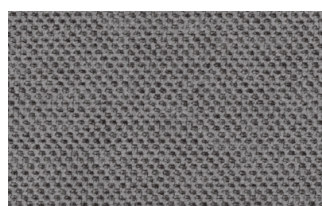
74



81



96

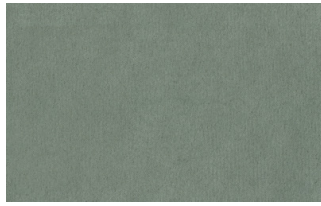


103

Divina



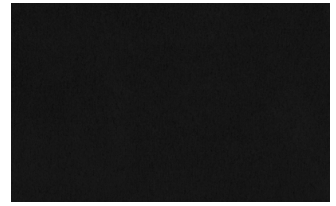
15



19



21



22



34



46



49



50



76



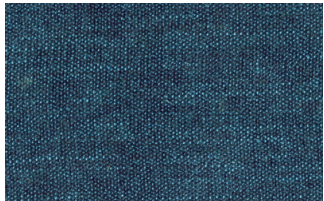
88



561

START

Scoop



6



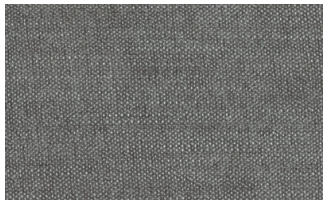
7



9



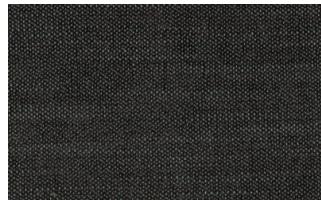
25



31



59

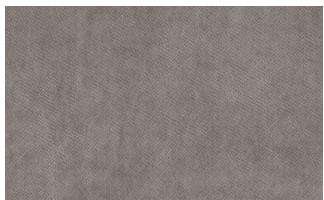


104



561

Stropiccio



4



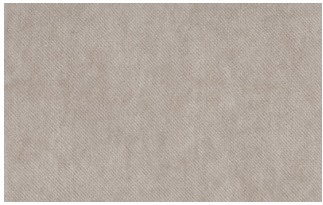
6



8



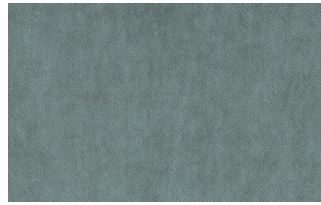
17



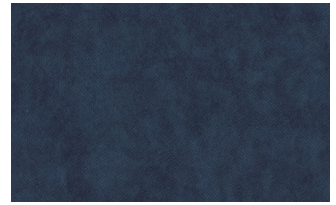
19



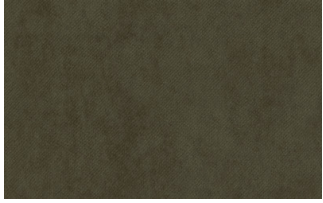
20



22

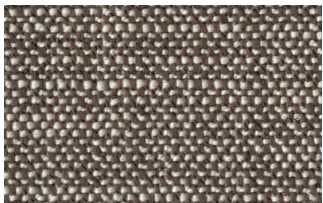


23

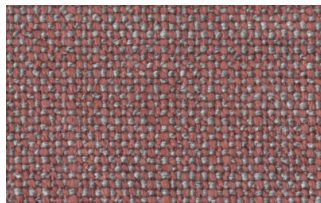


30

Nodone



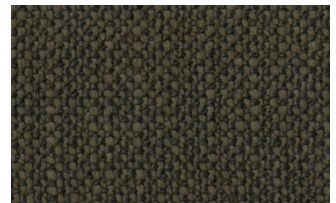
1302



1307



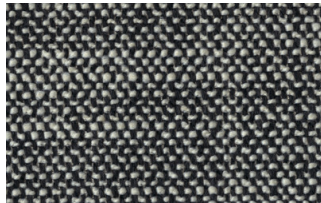
1308



1309



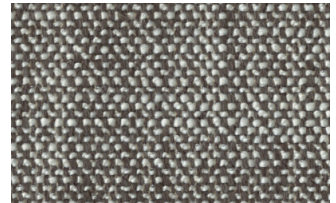
1310



1311



1313



1314

R Flair



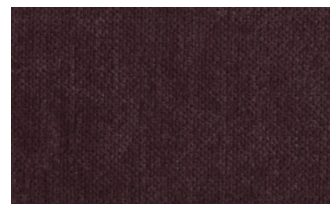
P321-6200-039



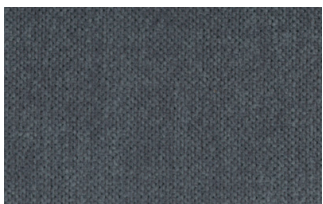
P321-6200-901



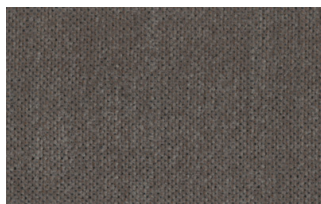
P321-6300-419



P321-6300-503



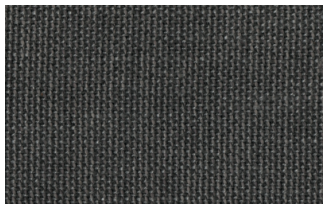
P321-6300-988



P321-6300-996

EXTRA

Anice



1



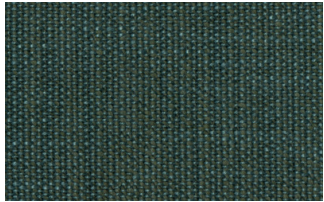
2



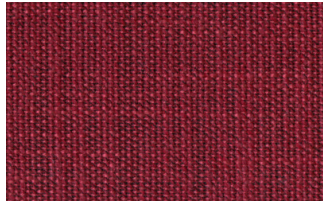
3



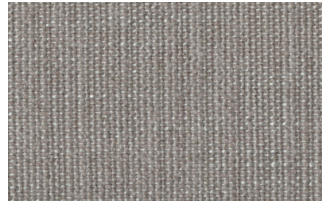
4



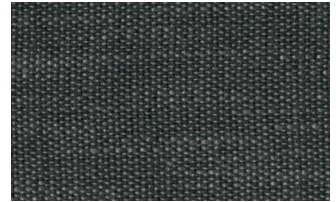
5



6



7

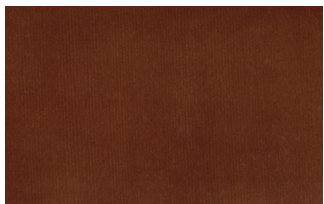


8

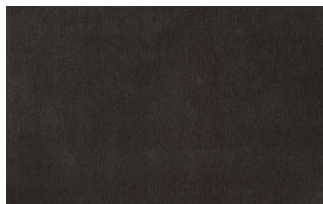


9

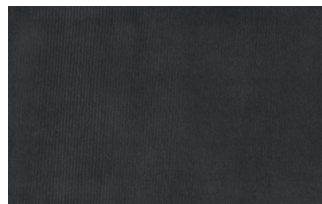
Lovely



6



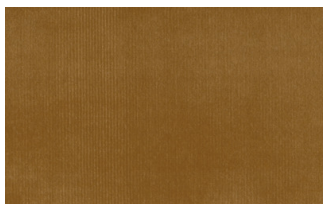
10



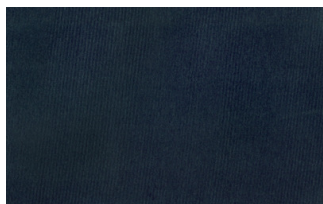
19



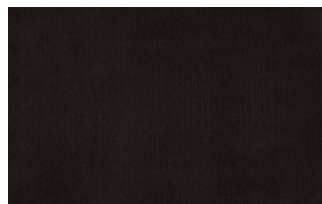
22



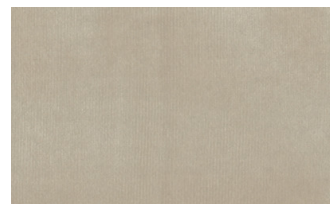
27



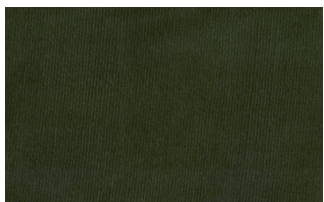
31



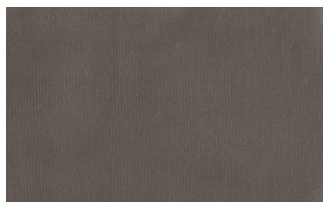
36



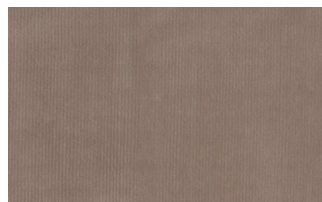
102



113



200



202

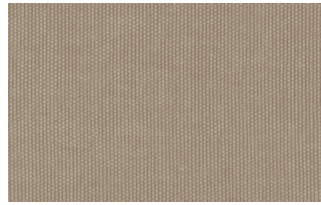
Cosme



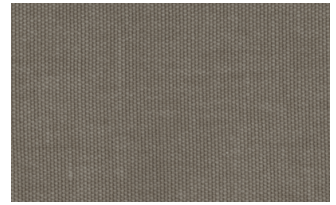
e200



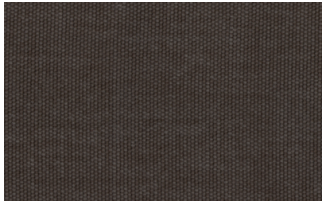
e202



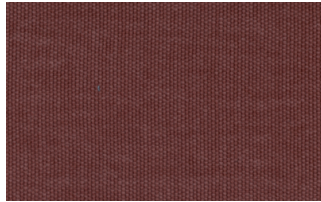
e205



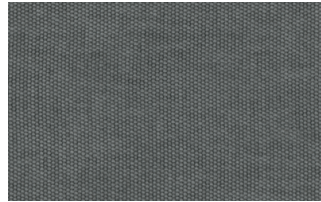
e206



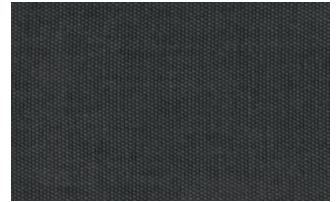
e209



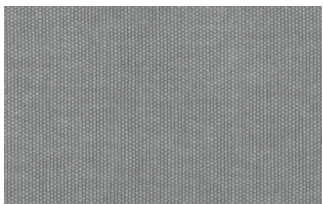
e220



e232



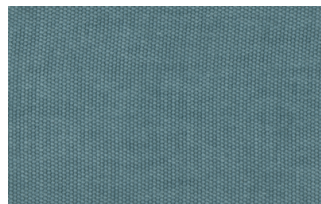
e234



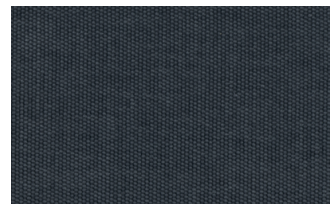
e236



e240

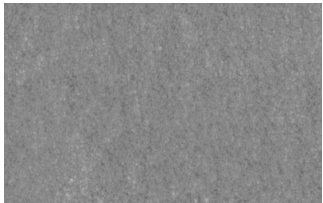


e241



e244

Soda



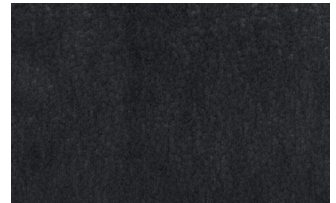
29



30



39



41



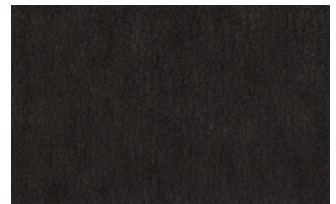
56



62



74



104

LIGHT

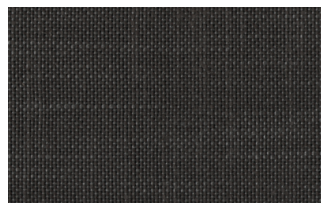
Lima



2



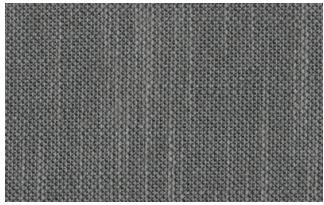
5



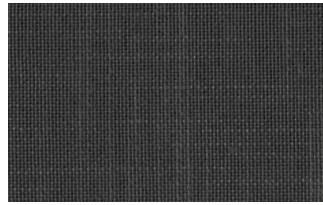
10



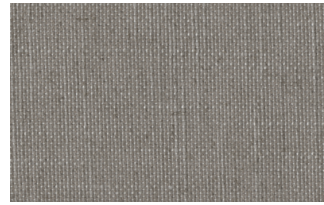
12



14



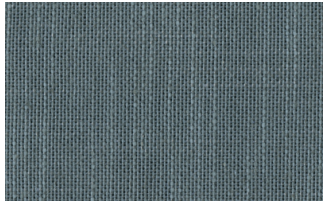
16



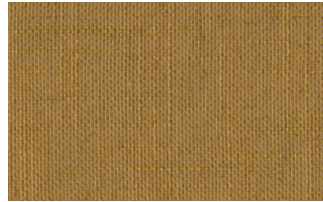
23



29



31



43

Mimi



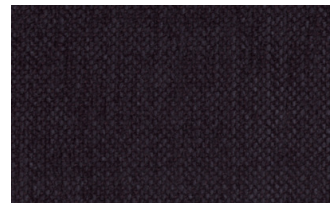
A3004



A3005



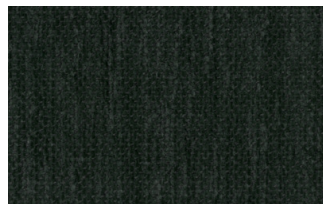
A3006



A3014



A3018

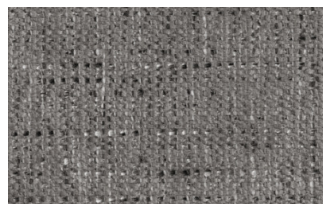


A3023

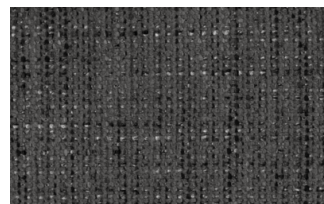
Memphis



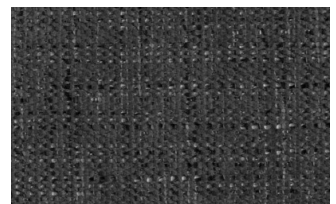
1



6



10



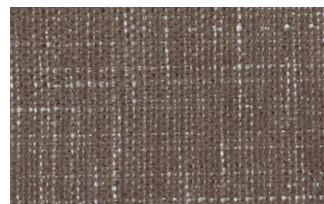
11



13



14



15



16

SUPER

Hylemt



25



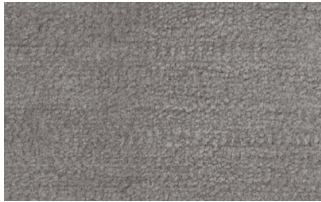
102



109



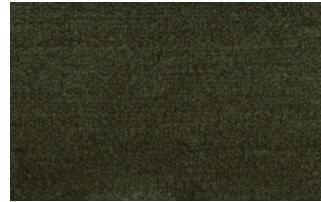
117



121



204



207

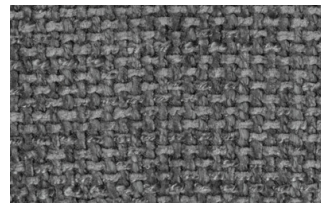
Axum



3



11



12



18



21



23



29



30

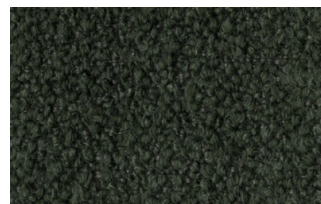
Barnum Unito



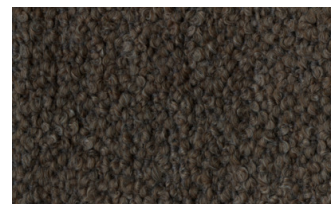
1 bianco



2 corda



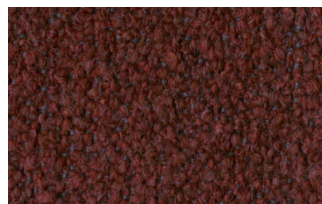
9 bosco



10 piombo



13 lavagna



23 bruciato



24 lana

Leathers

K LEATHERS

Leather



200



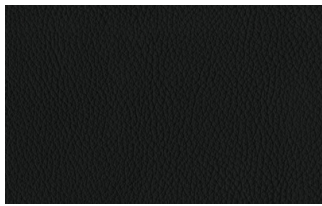
202



204



206



207



208



211



214



217



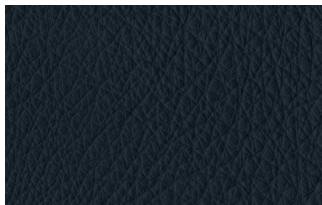
224



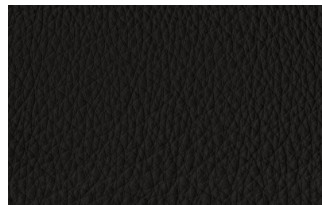
228



234



274



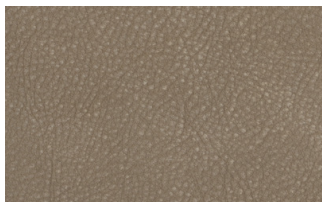
298



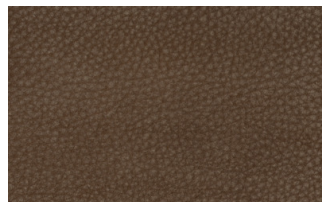
301

W LEATHERS

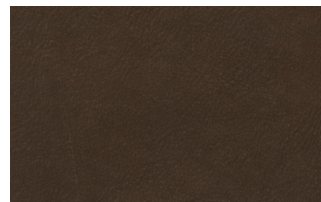
Nabuk



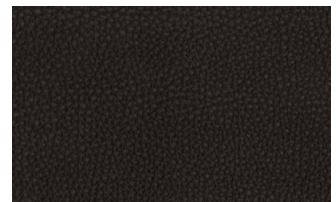
Creta



Camel



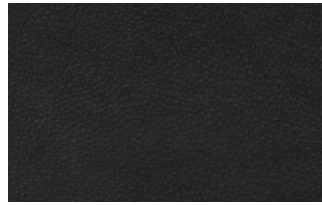
marrone



Testa di moro



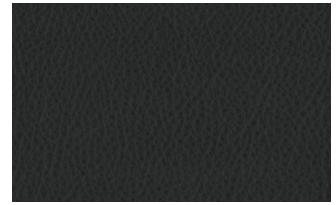
Seppia



Black



Hard leather



Grigio

Ecoleathers

EXTRA ECO-LEATHERS

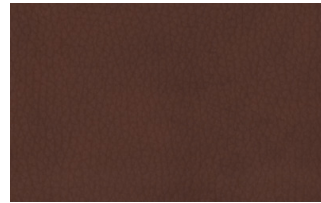
Vintage eco-leather



2



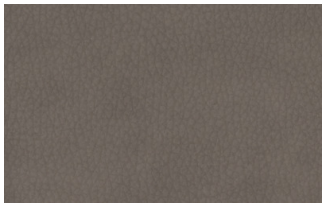
3



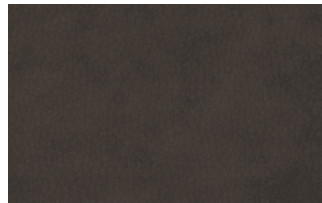
4



6



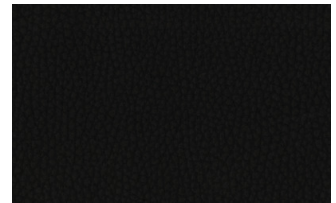
7



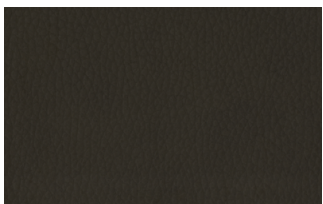
8



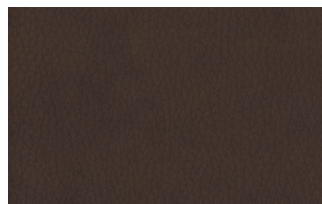
9



14



19



22