

Poltrone

Bea

È una poltroncina da abbinare al tavolo della sala da pranzo o della cucina per provare un comfort completo oppure da infilare in tutti quegli spazi ridotti dove vuoi un attimo di relax in comodità. Scegli tu se dotarla delle tradizionali quattro gambe o del più attuale basamento a raggera.



I TESSUTI DI BEA

Sono davvero molti i rivestimenti disponibili per la poltroncina Bea. C'è l'intera cartella Dall'Agnese con tessuti, pelli ed ecopelli, selezionati con cura e attenzione per rispondere a esigenze molto diverse, da quelle più raffinate, e a volte retrò, a quelle più moderne. Sempre di qualità.



FINITURE

Scopri ora tutti i tessuti offerti per rivestire la poltroncina Bea. Il basamento in legno di faggio, tradizionale o a raggera, può essere richiesto nelle finiture del rovere.

Tessuti

BASIC

X370



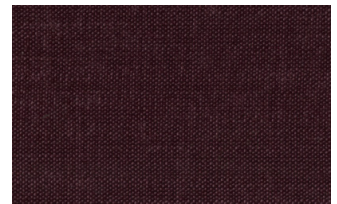
3



4



9



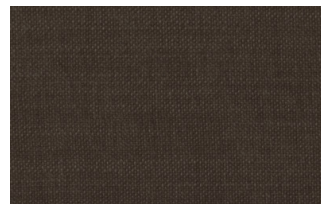
10



23



29



32

Relax



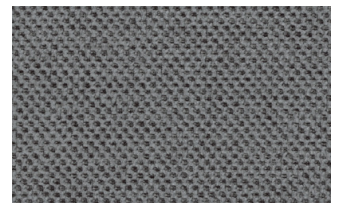
5



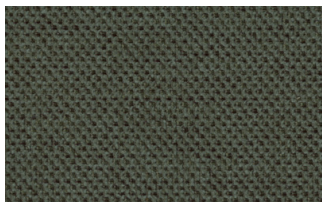
20



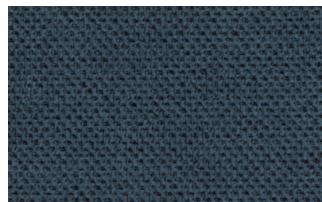
25



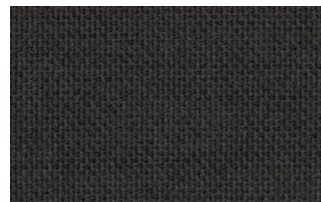
53



62



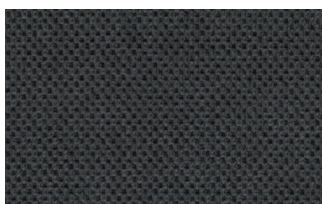
66



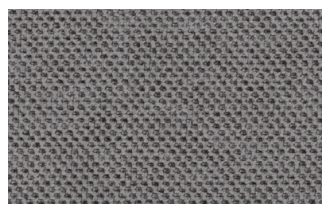
74



81



96



103

Divina



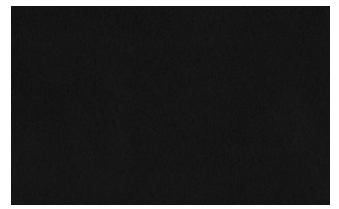
15



19



21



22



34



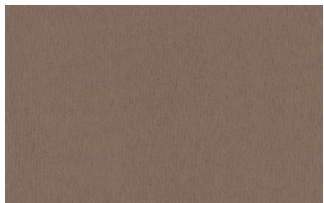
46



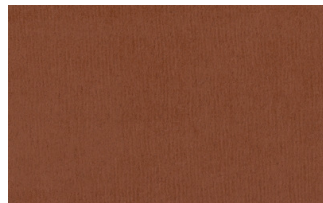
49



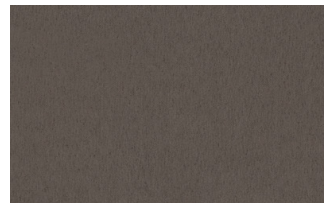
50



76



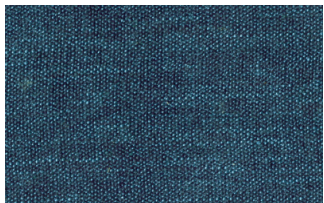
88



561

START

Scoop



6



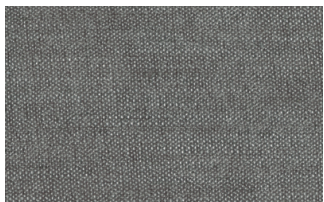
7



9



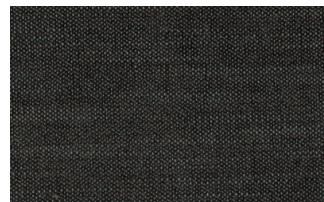
25



31



59



104



561

Stropiccio



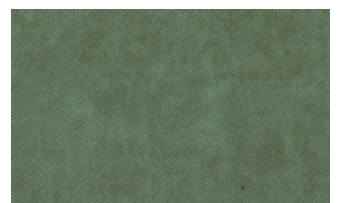
4



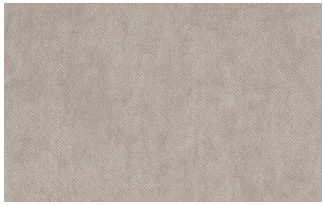
6



8



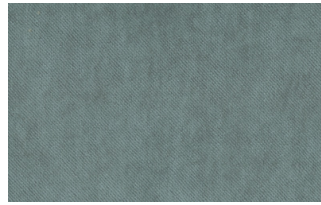
17



19



20



22

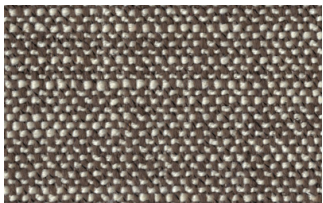


23

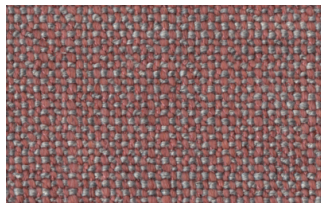


30

Nodone



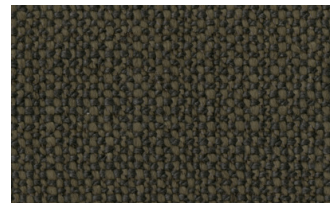
1302



1307



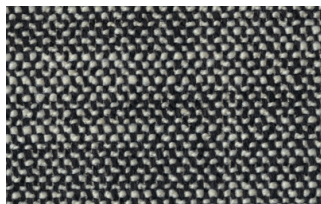
1308



1309



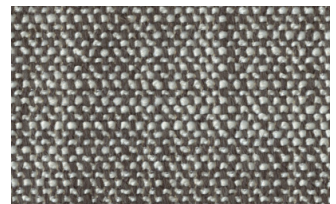
1310



1311



1313



1314

R Flair



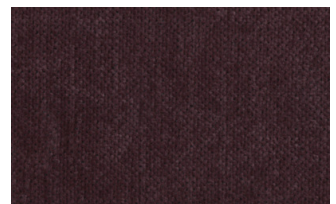
P321-6200-039



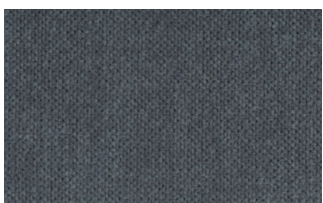
P321-6200-901



P321-6300-419



P321-6300-503



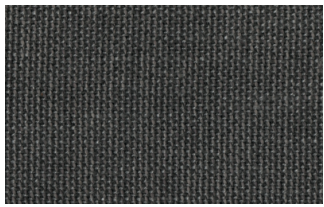
P321-6300-988



P321-6300-996

EXTRA

Anice



1



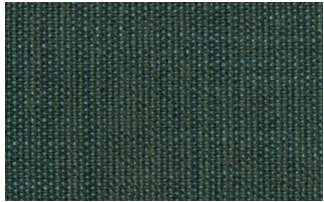
2



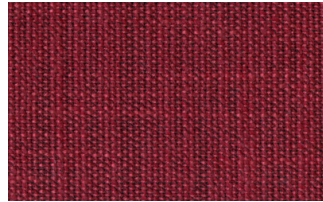
3



4



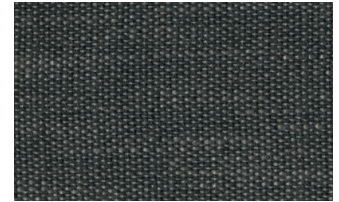
5



6



7

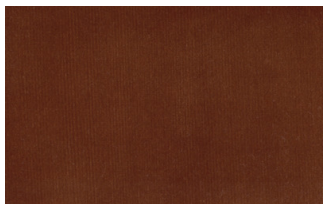


8

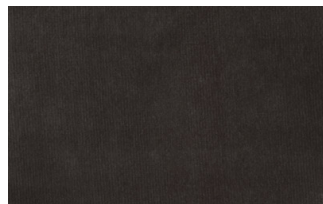


9

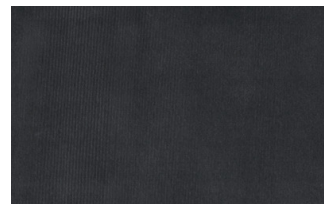
Lovely



6



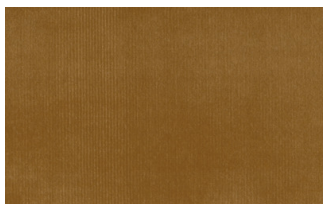
10



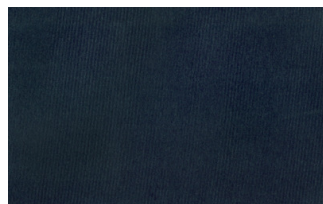
19



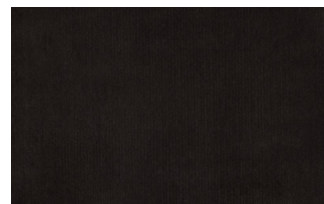
22



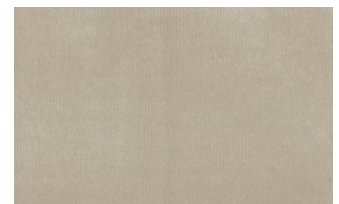
27



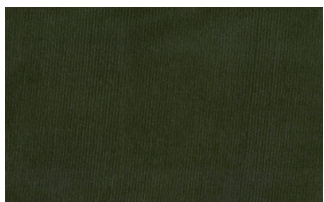
31



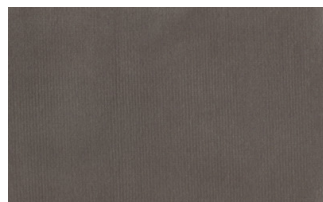
36



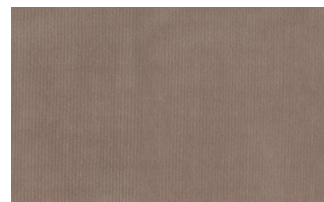
102



113



200



202

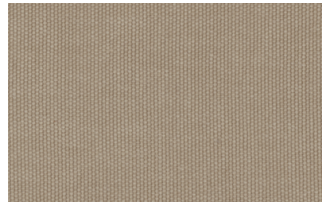
Cosme



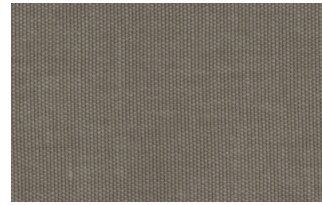
e200



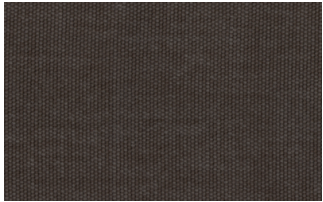
e202



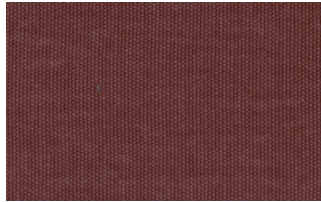
e205



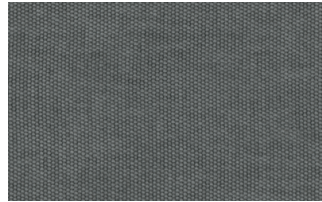
e206



e209



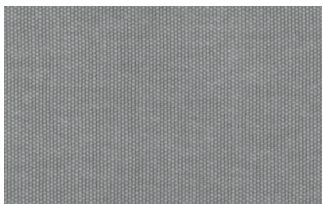
e220



e232



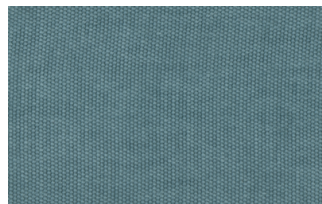
e234



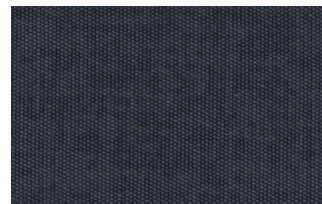
e236



e240

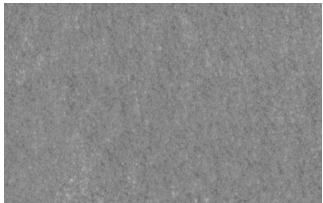


e241



e244

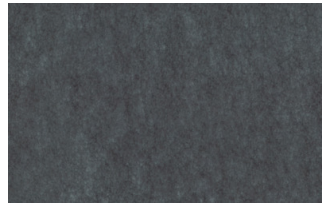
Soda



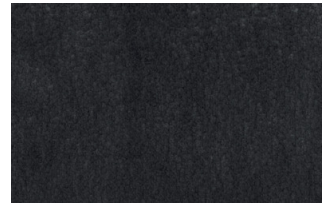
29



30



39



41



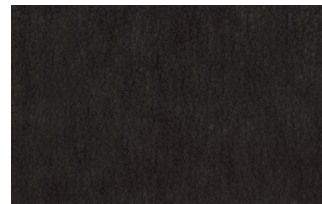
56



62



74



104

LIGHT

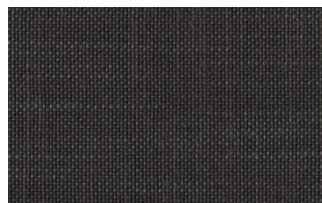
Lima



2



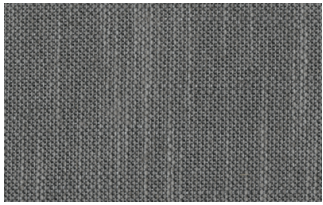
5



10



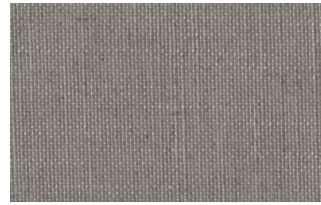
12



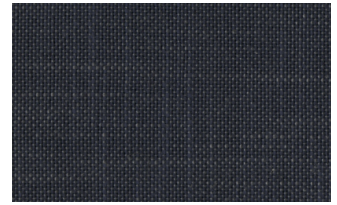
14



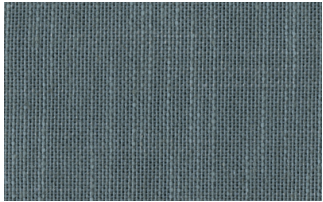
16



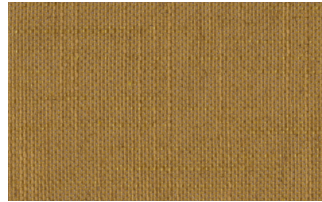
23



29



31

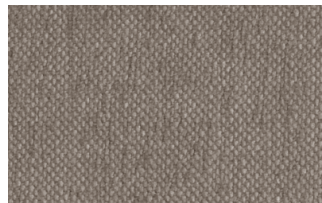


43

Mimi



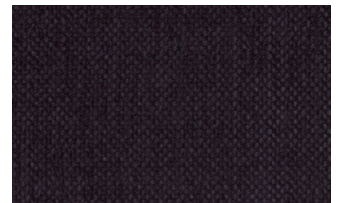
A3004



A3005



A3006



A3014



A3018

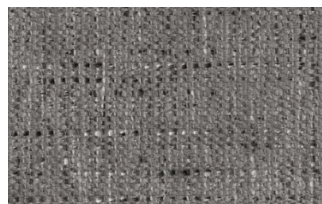


A3023

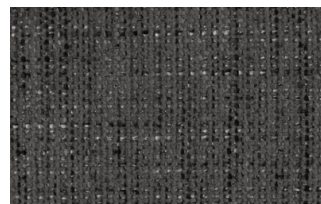
Memphis



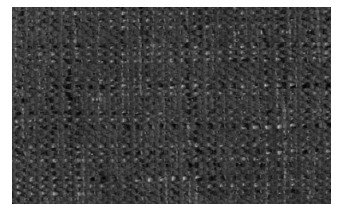
1



6



10



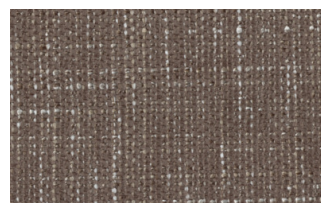
11



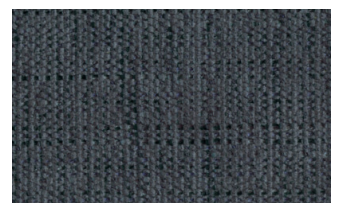
13



14



15



16

SUPER

Hylemt



25



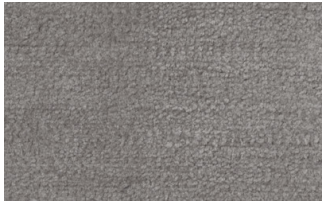
102



109



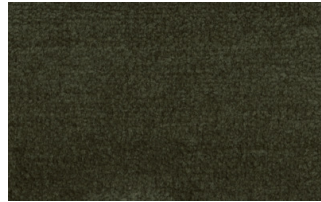
117



121



204



207

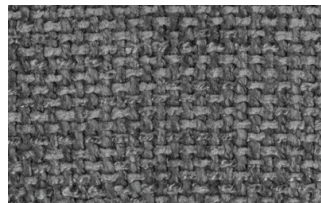
Axum



3



11



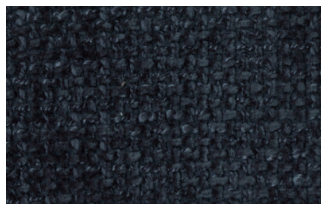
12



18



21



23



29



30

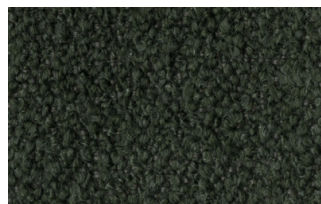
Barnum Unito



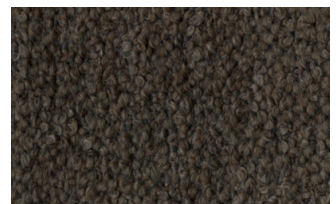
1 bianco



2 corda



9 bosco



10 piombo



13 lavagna



23 bruciato



24 lana

Pelli

PELLI K

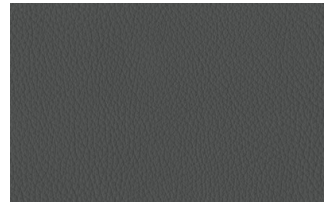
Pelle



200



202



204



206



207



208



211



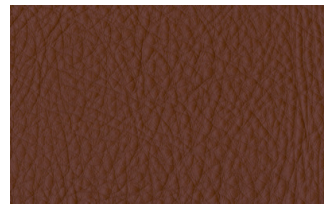
214



217



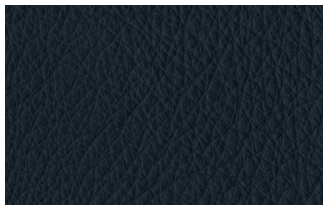
224



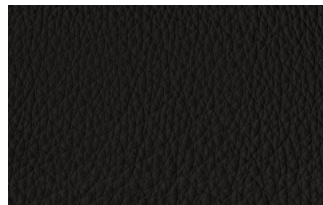
228



234



274



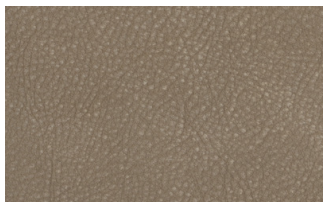
298



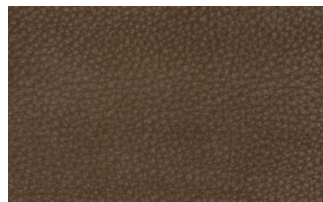
301

PELLI W

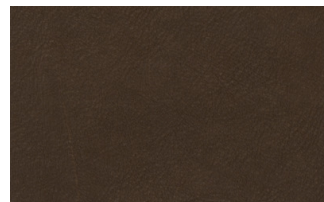
Nabuk



Creta



Camel



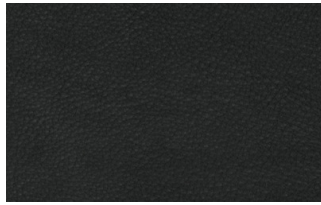
Marrone



Testa di moro



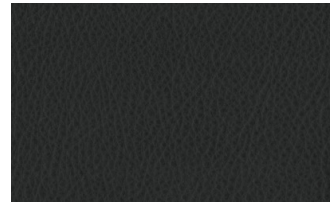
Seppia



Black



Cuoio



Grigio

Ecopelli

EXTRA ECOPELLI

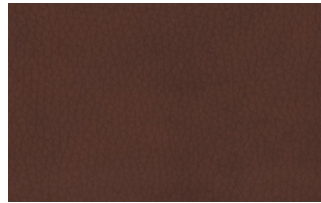
Fintapelle vintage



2



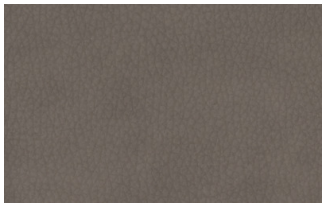
3



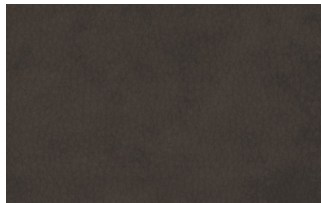
4



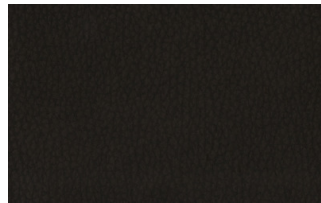
6



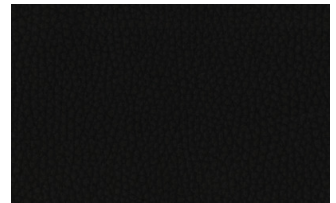
7



8



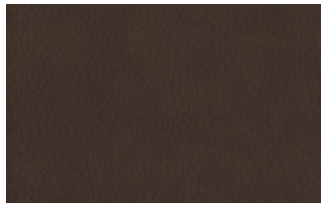
9



14



19



22