

Tables

# Radar



Table with metal frame, central tie rods, thin top in different sizes. Radar is the harmony of tension. It intercepts those who seek an agreement between balance and movement.



## TABLE WITH TIE RODS

Radar is a table with central tie rods attached to the metal base to support its structure, a nod to the lattice structures of engineering designs, grafted onto an homage to the famous medieval "fratino table." Used in convents, it had a thick, narrow and long top supported by legs placed at the ends, connected by a longitudinal crossbar.



## THIN TOP

Radar's slim top is either fixed and rectangular, so as to create a table with an industrial flavor, or with a fixed top that is more oval to aim for a more traditional and elegant style ensemble. In the rectangular veneer version, the perimeter edge can be chosen straight or tilted at 30°.



## BALANCE OF STYLES

The rigorousness of the Radar table goes well with other regular, linear forms, such as the Glass Up storage units for the living room or the Slim Up sideboard and its distinctive ornamental play of horizontal and vertical grooves.



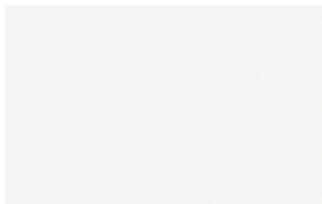
# FINISHES

The Radar table offers a wide variety of finishes to choose from to customize it to your exact needs. Check them out now.

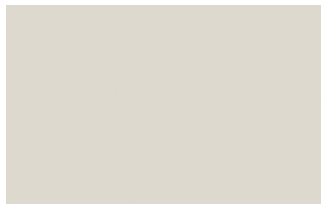
## Lacquers

### MATT LACQUERS

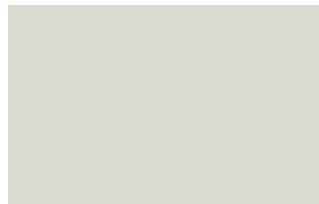
#### Matt lacquers



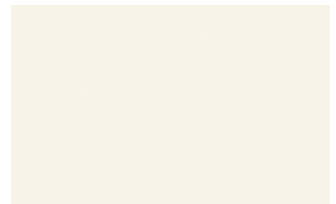
Bianco



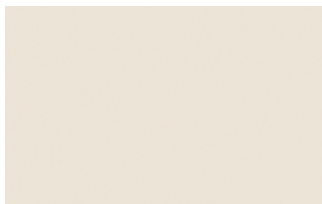
Ghiaccio



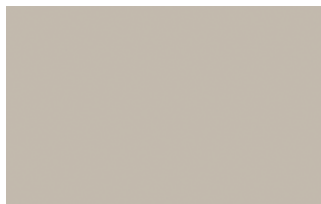
Sabbia



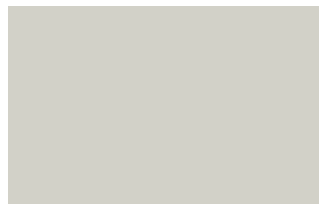
Panna



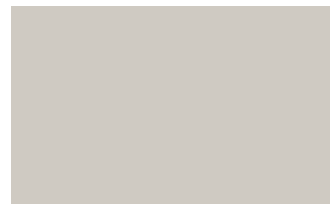
Crema



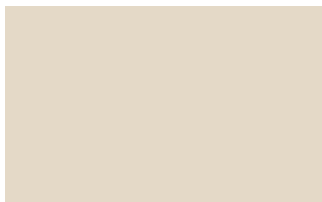
Grigio seta



Grigio perla



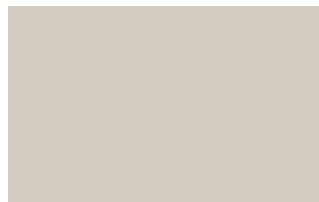
Light grey



Fior di loto



Giallo senape



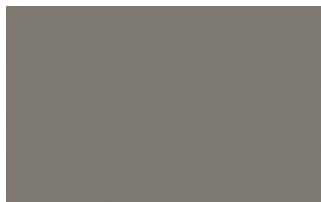
Tortora



Canapa



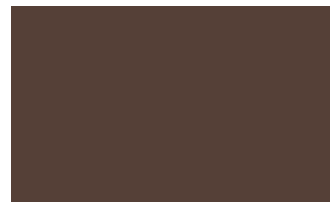
Corda



Dark grey



Terracotta



Moka



Rosso bordeaux



Rosso



Rosa cipria



Bruciato



Carta da zucchero



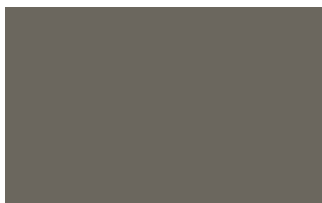
Grigio blu



Verde pallido



Verde malva



Grigio aston



Celeste



Turchese



Grigio Garda



Blu cobalto



Oceano

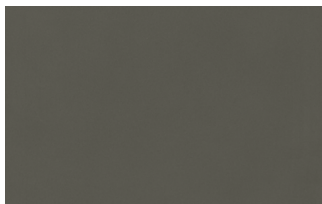


Grigio antracite

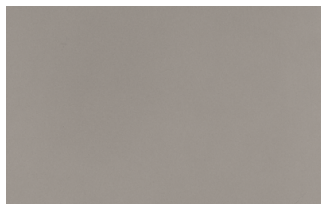


Nero

## Metallic matt lacquers



Titanium



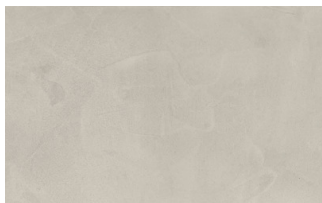
Nichel



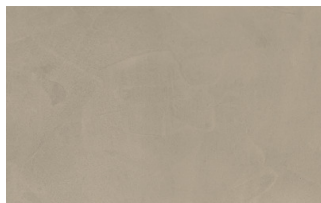
Piombo

## UP SURFACES

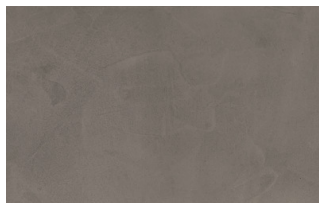
### Concrete lacquered effects



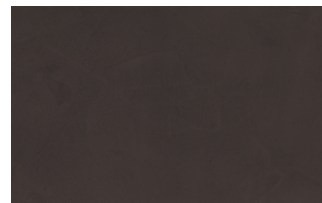
Perla



Argilla

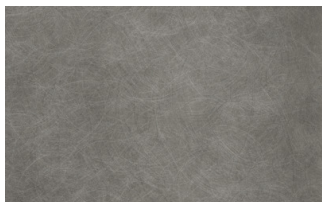


Grafite

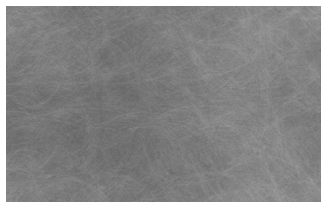


Lava

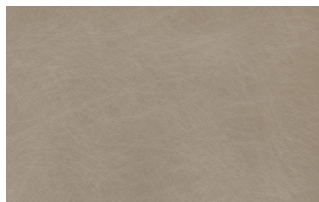
### Metal effect lacquers



Titanio



Piombo



Nichel



ossido ottone



ossido bronzo

## Woods

### WOODS 1

#### Woods 1



Oak visone



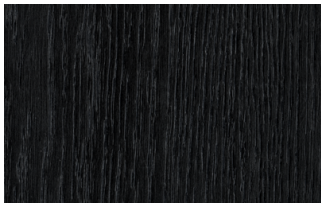
Oak cenere



Oak castoro



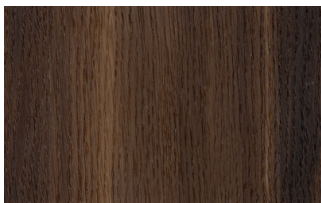
Natural oak



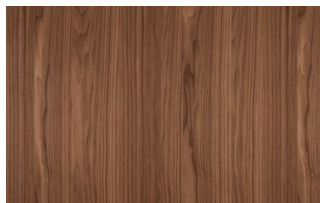
Oak carbone

### WOODS 2

#### Woods 2



Heat - treated oak



Canaletto walnut

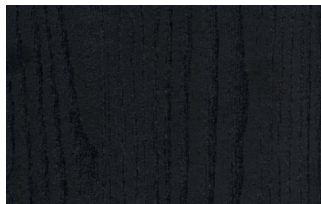
## Textured finishes

### TEXTURED FINISHES

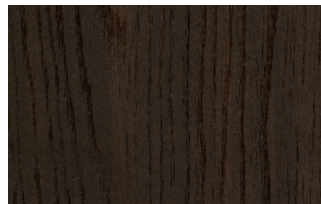
#### Textured finishes



Avana



Oak carbone



Heat - treated oak



pietra piasentina

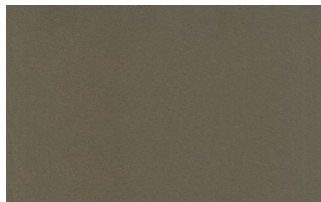
## Metals

### METALS 1

#### Metals 1



Black



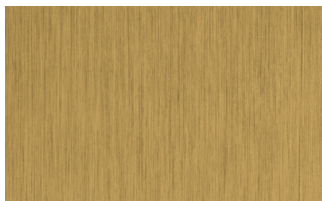
Titanium



Brown

### METALS 2

#### Metals 2



Antiqued brass