

Armchairs

# Bea

It is an armchair that can be paired with the dining room or kitchen table to experience complete comfort or tucked into all those small spaces where you want a moment to relax in comfort. You choose whether to equip it with the traditional four legs or the more contemporary halo base.



## BEA'S FABRICS

There are indeed many covers available for the Bea armchair. There is the entire Dall'Agnese range with fabrics, leathers and eco-leathers, carefully and thoughtfully selected to meet very different needs, from the more refined, and sometimes retro, to the more modern. Always quality.



# FINISHES

Discover now all the fabrics offered for upholstering the Bea armchair. The beech wood base, traditional or banded, can be requested in oak finishes.

## Fabrics

### BASIC

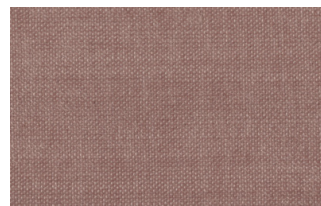
#### X370



3



4



9



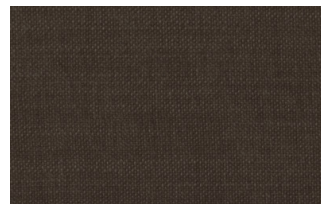
10



23



29



32

### Relax



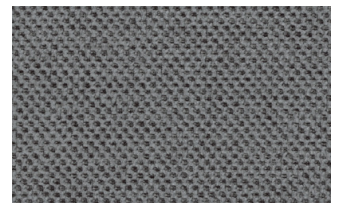
5



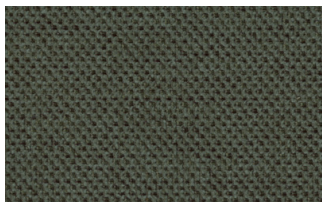
20



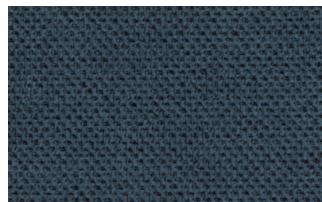
25



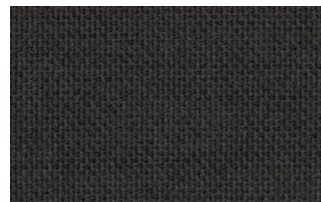
53



62



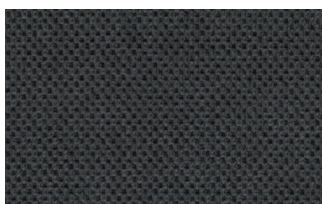
66



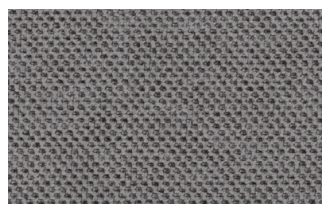
74



81



96



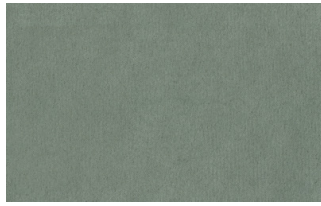
103



## Divina



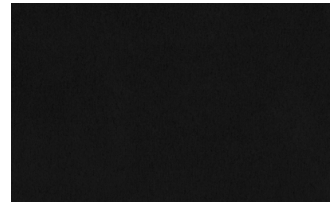
15



19



21



22



34



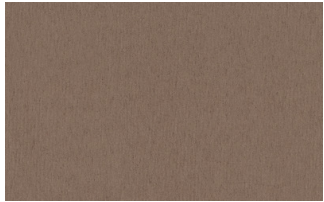
46



49



50



76



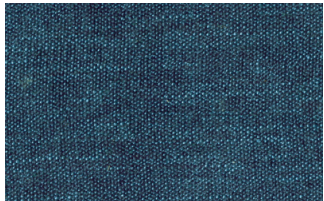
88



561

## START

### Scoop



6



7



9



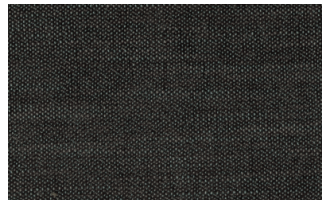
25



31



59

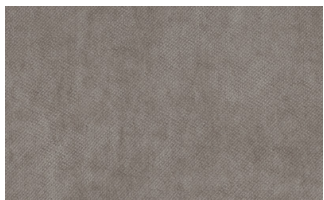


104



561

### Stropiccio



4



6

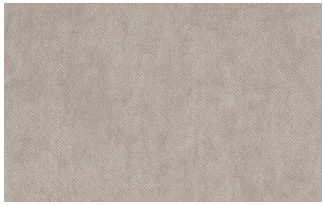


8



17

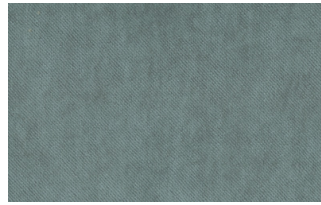




19



20



22

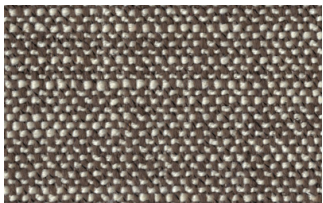


23

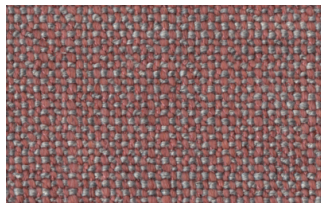


30

## Nodone



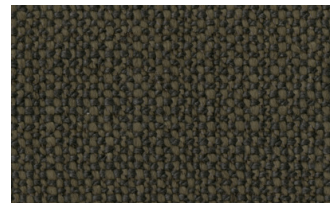
1302



1307



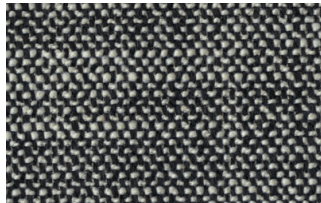
1308



1309



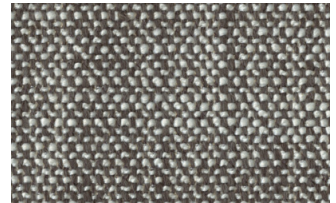
1310



1311



1313



1314

## R Flair



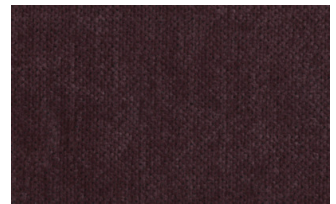
P321-6200-039



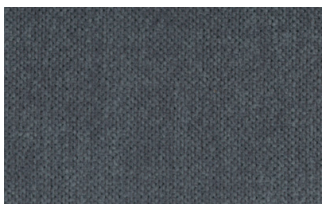
P321-6200-901



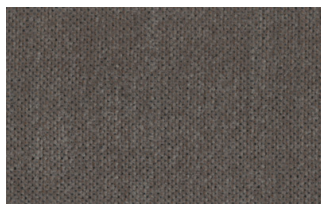
P321-6300-419



P321-6300-503



P321-6300-988

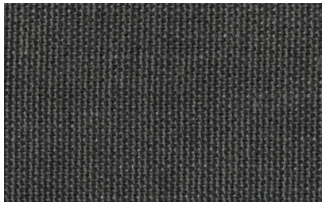


P321-6300-996

## EXTRA

### Anice





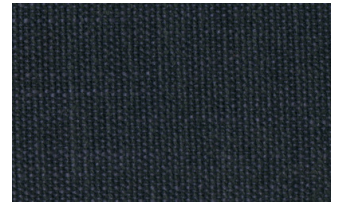
1



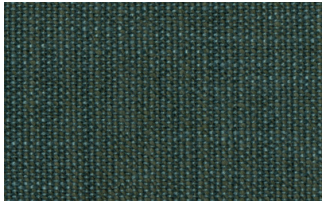
2



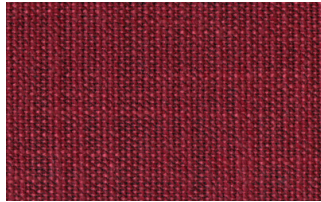
3



4



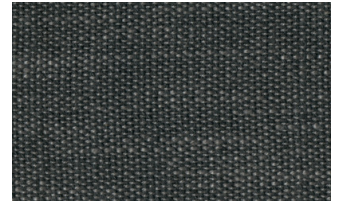
5



6



7



8

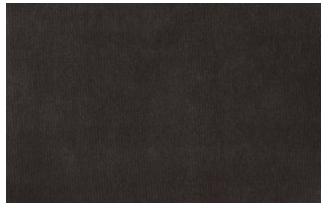


9

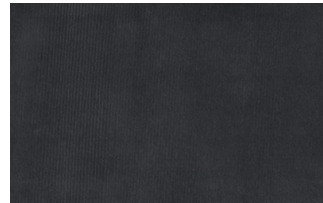
## Lovely



6



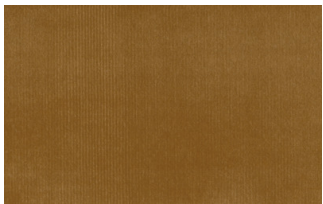
10



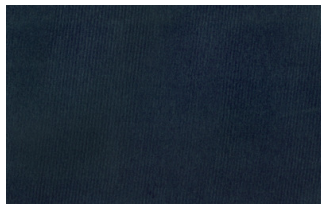
19



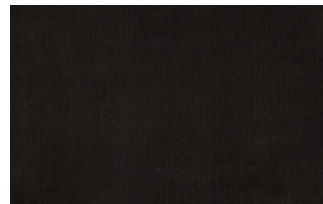
22



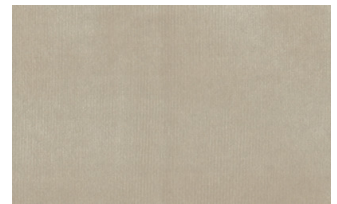
27



31



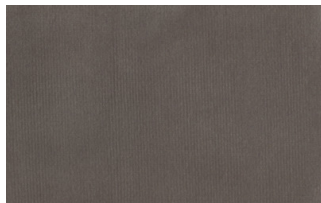
36



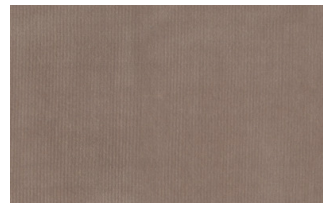
102



113



200



202

## Cosme

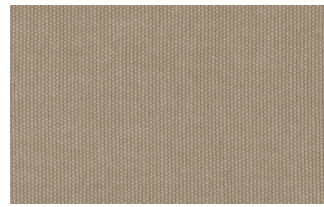




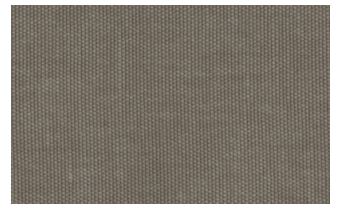
e200



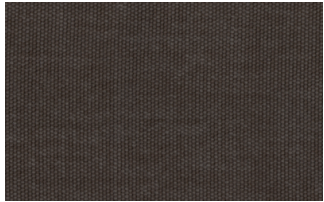
e202



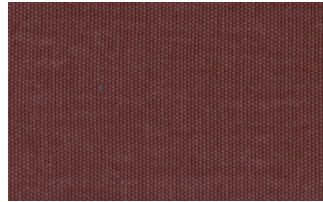
e205



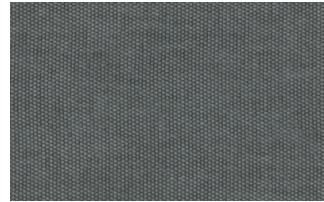
e206



e209



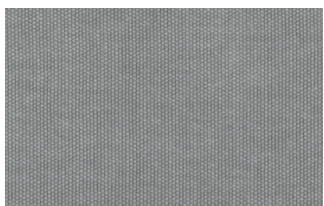
e220



e232



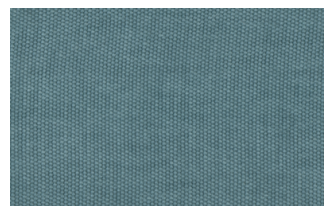
e234



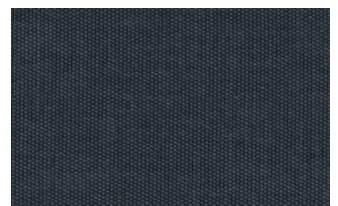
e236



e240

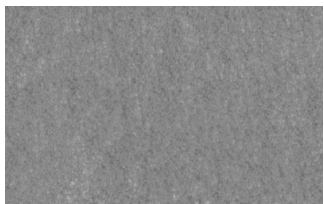


e241



e244

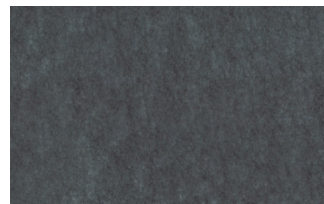
## Soda



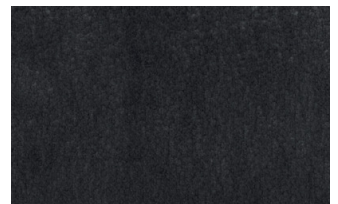
29



30



39



41



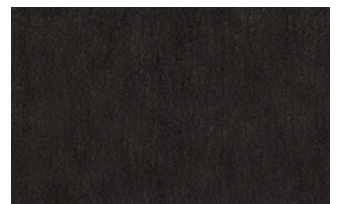
56



62



74



104

## LIGHT

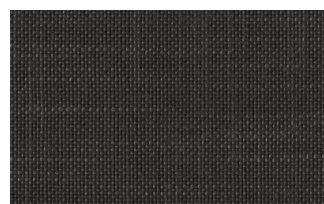
### Lima



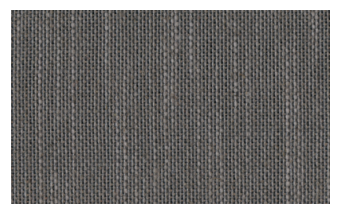
2



5

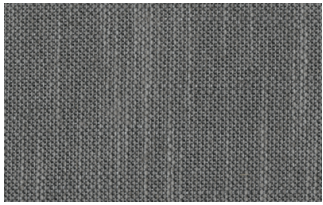


10



12

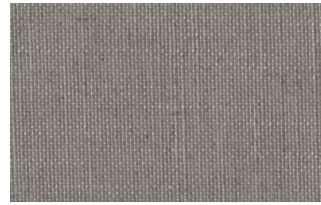




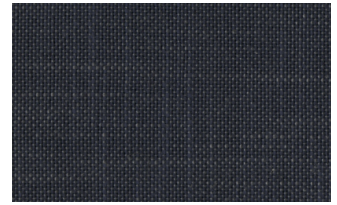
14



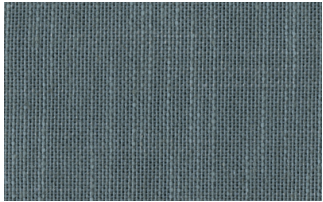
16



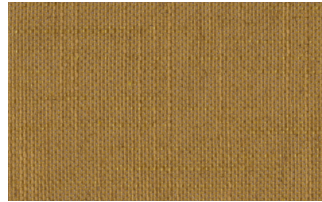
23



29



31

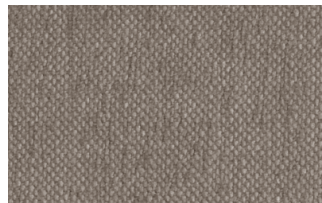


43

## Mimi



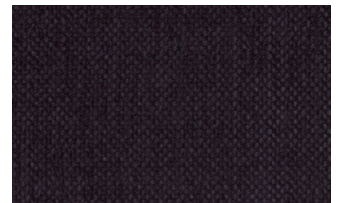
A3004



A3005



A3006



A3014



A3018

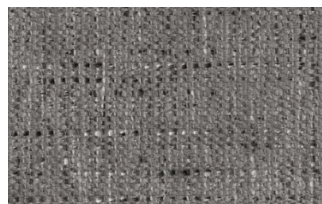


A3023

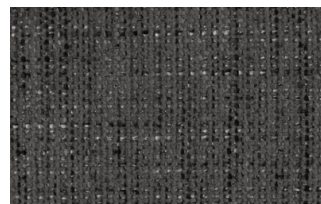
## Memphis



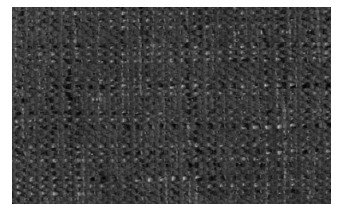
1



6



10



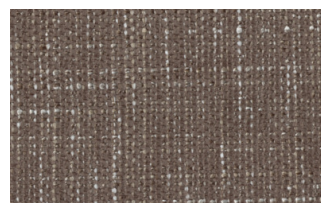
11



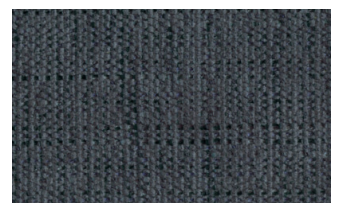
13



14



15



16

## SUPER

### Hylemt





25



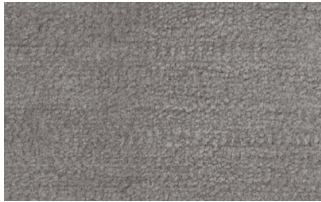
102



109



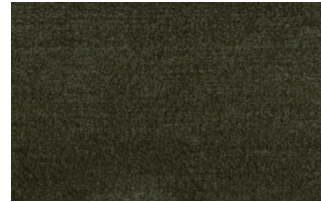
117



121



204



207

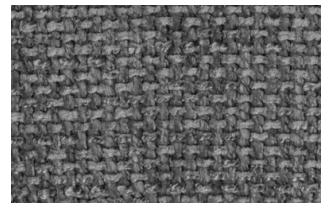
## Axum



3



11



12



18



21



23



29



30

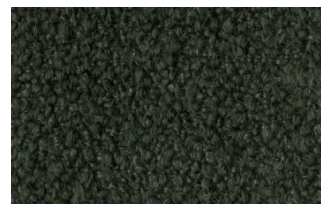
## Barnum Unito



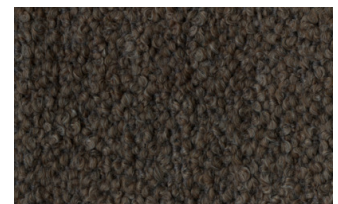
1 bianco



2 corda



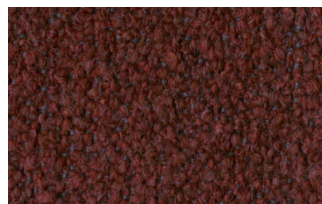
9 bosco



10 piombo



13 lavagna



23 bruciato



24 lana

## Leathers



## K LEATHERS

Leather



200



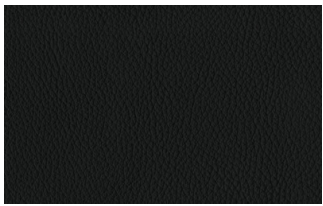
202



204



206



207



208



211



214



217



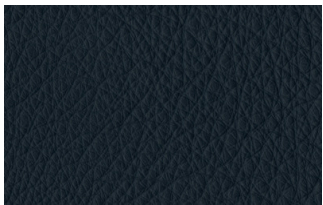
224



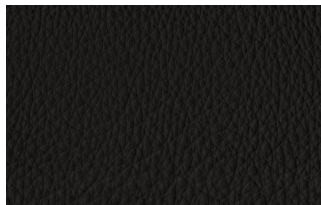
228



234



274



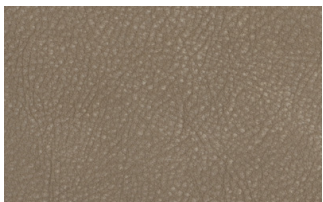
298



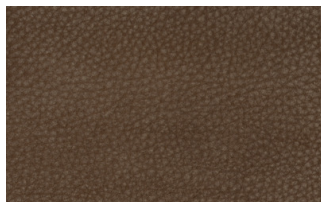
301

## W LEATHERS

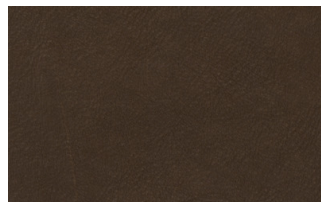
Nabuk



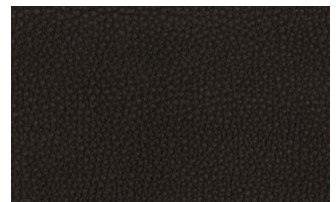
Creta



Camel



marrone

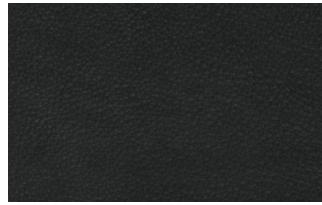


Testa di moro





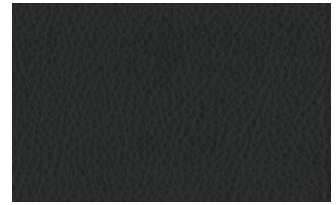
Seppia



Black



Hard leather



Grigio

## Ecoleathers

### EXTRA ECO-LEATHERS

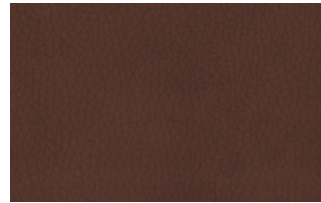
#### Vintage eco-leather



2



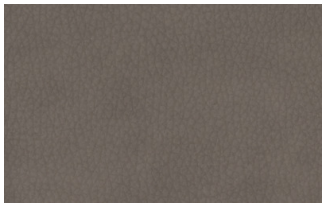
3



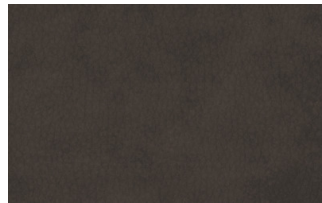
4



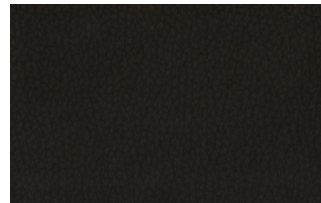
6



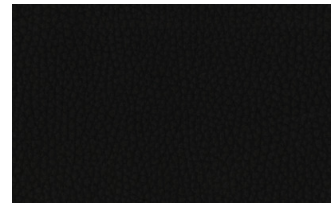
7



8



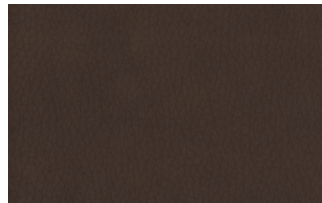
9



14



19



22