

Chairs

# Gulp

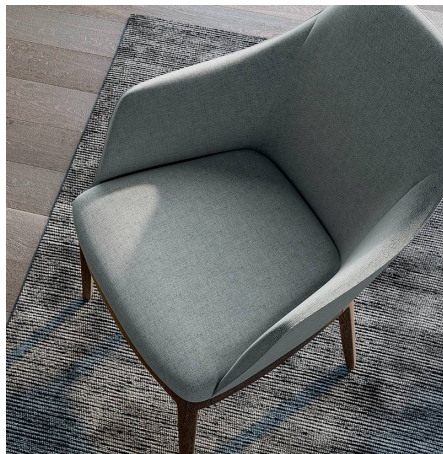


Gulp is a comfortable chair that takes its space. In the armchair version even more so. The finely crafted wooden base is well placed on the ground. The seat is sloped, to be upholstered in fabric, leather or faux leather.



## GULP ARMCHAIR

The elegant and classic armchair version emphasizes the comfort of the chair model. The wraparound back continues into the sides in two high armrests that welcome with confidence and an essential, soft and light line.



## GULP CHAIR

The Gulp upholstered chair is perfect if you have smaller spaces than you need for the armchair and if you don't want to give up comfort.





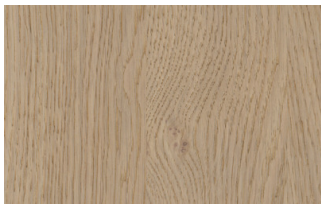
## FINISHES

Remember that for both Gulp chair and armchair you can customize the back with a different material or finish from those used on the front. Find out about all the finishes now.

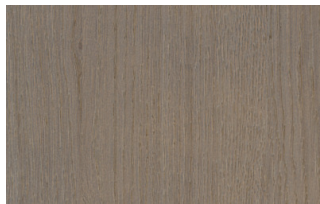
### Woods

#### WOODS 1

##### Woods 1



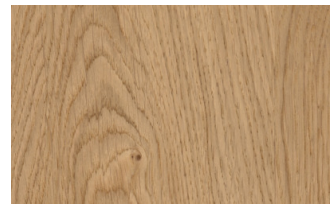
Oak visone



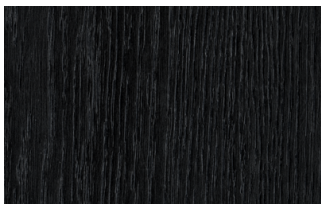
Oak cenere



Oak castoro



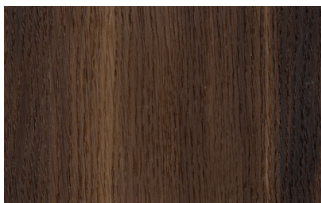
Natural oak



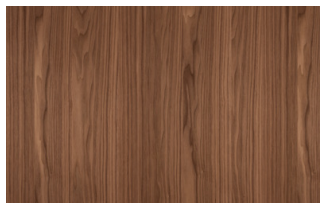
Oak carbone

#### WOODS 2

##### Woods 2



Heat-treated oak

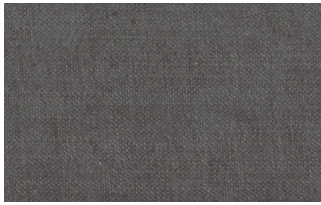


Canaletto Walnut

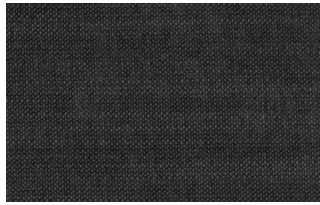
### Fabrics

#### BASIC

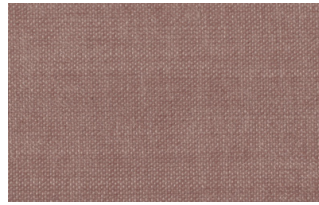
##### X370



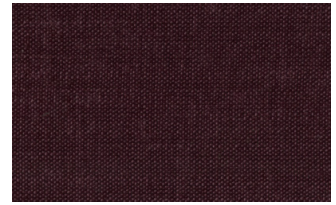
3



4



9



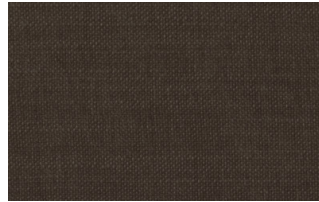
10



23



29



32

## Relax



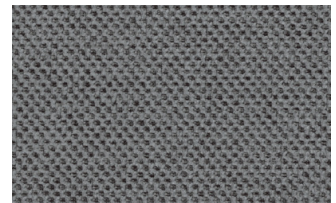
5



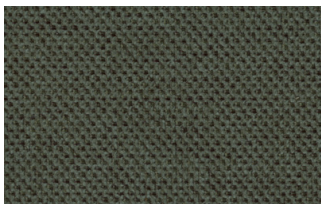
20



25



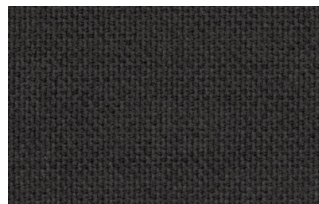
53



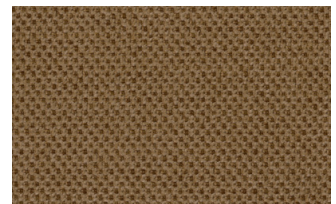
62



66



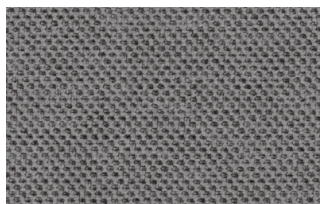
74



81

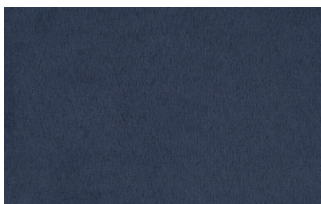


96



103

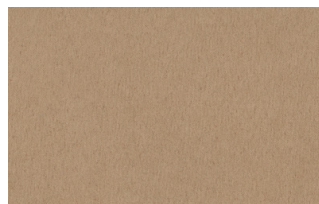
## Divina



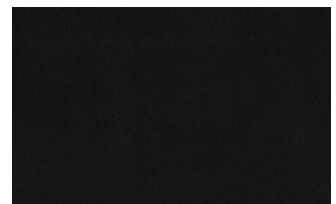
15



19



21

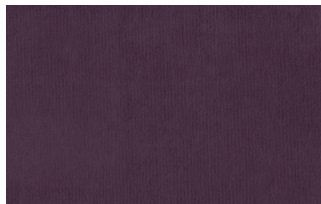


22

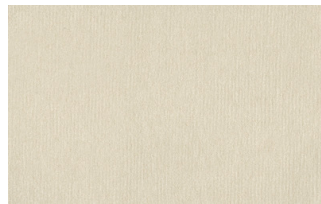




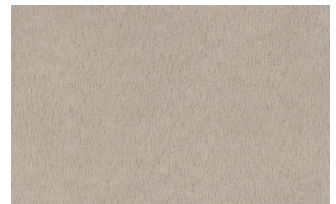
34



46



49



50



76



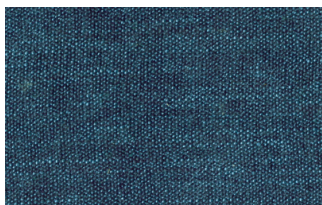
88



561

## START

### Scoop



6



7



9



25



31



59



104



561

### Stropiccio



4



6



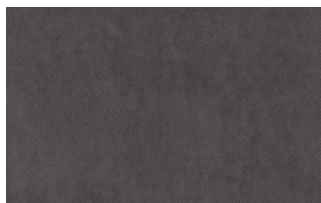
8



17



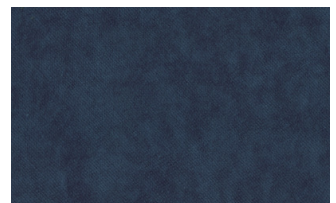
19



20

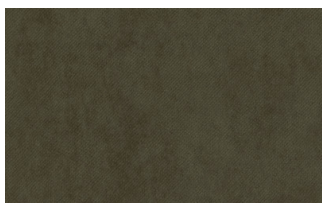


22



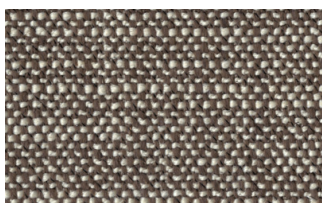
23



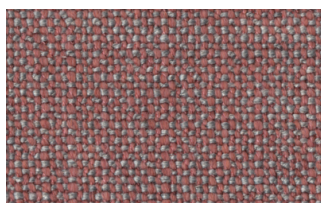


30

## Nodone



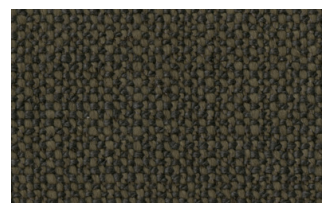
1302



1307



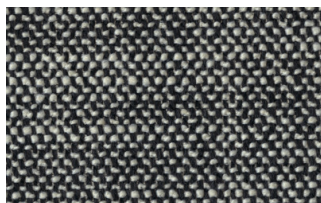
1308



1309



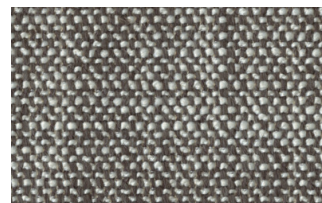
1310



1311



1313



1314

## R Flair



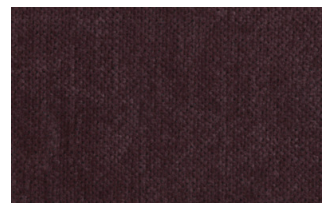
P321-6200-039



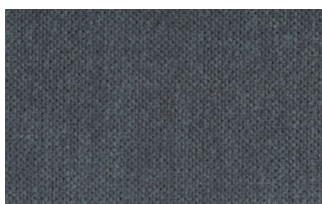
P321-6200-901



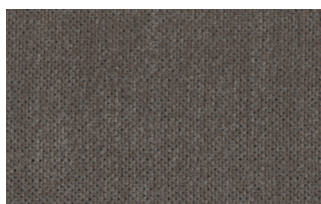
P321-6300-419



P321-6300-503



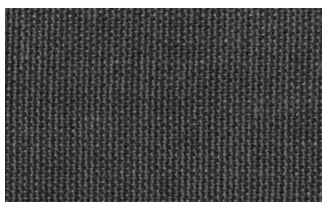
P321-6300-988



P321-6300-996

## EXTRA

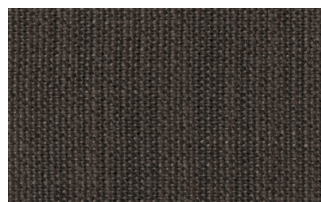
### Anice



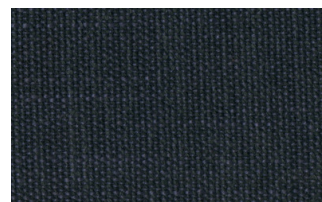
1



2

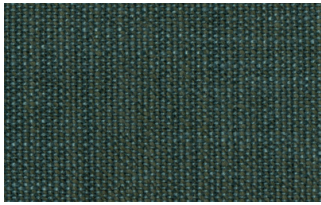


3

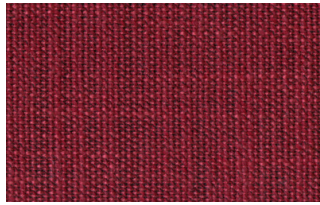


4





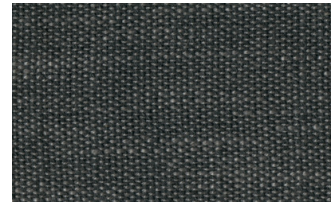
5



6



7

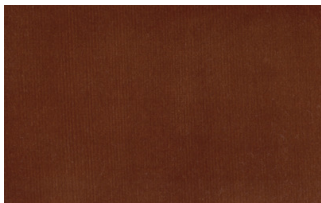


8

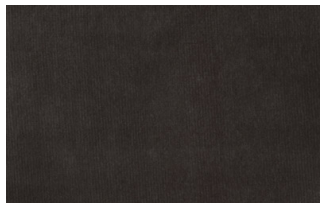


9

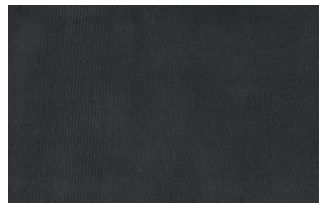
## Lovely



6



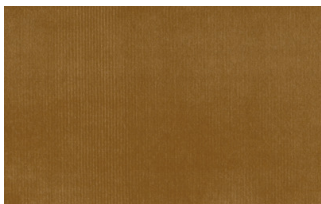
10



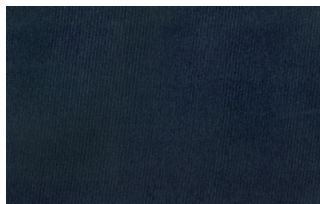
19



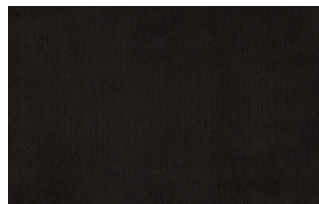
22



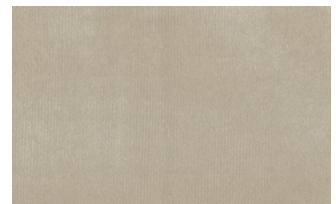
27



31



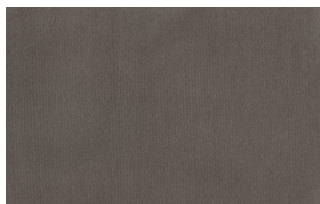
36



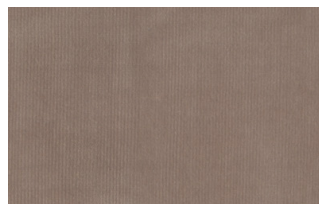
102



113

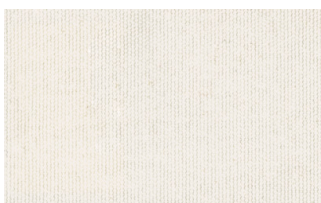


200

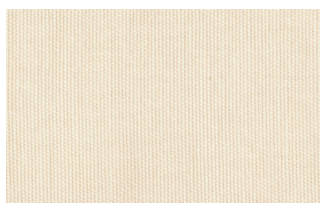


202

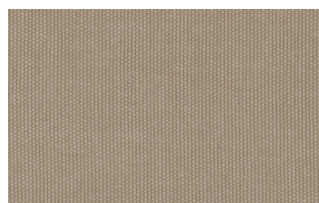
## Cosme



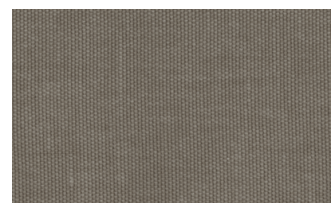
e200



e202

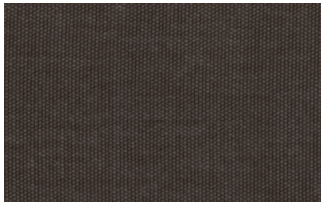


e205

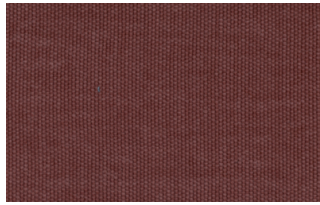


e206

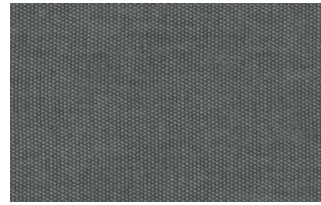




e209



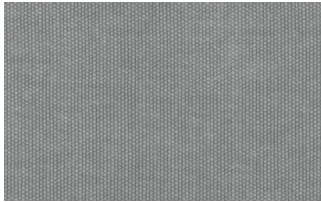
e220



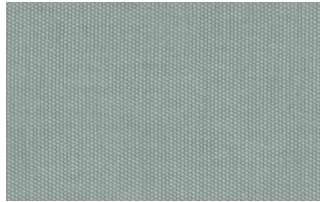
e232



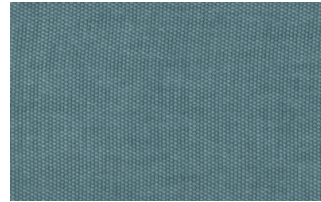
e234



e236



e240

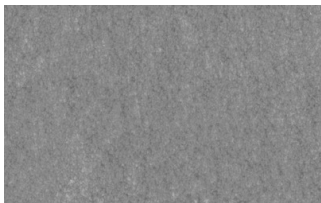


e241



e244

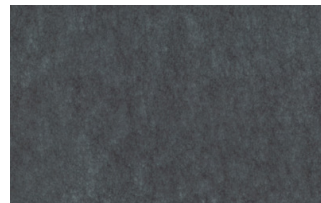
## Soda



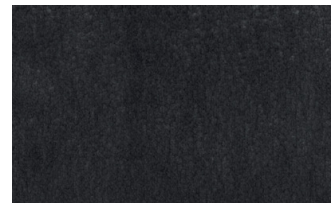
29



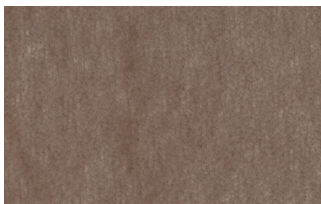
30



39



41



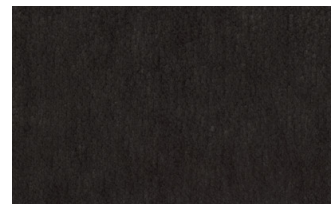
56



62



74



104

## LIGHT

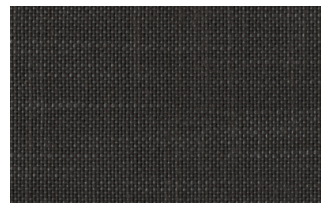
### Lima



2



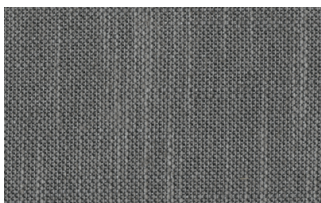
5



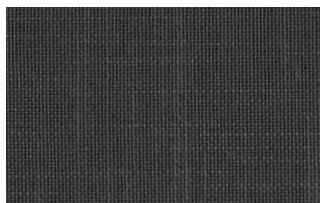
10



12



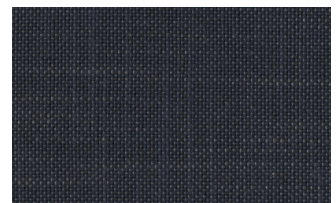
14



16

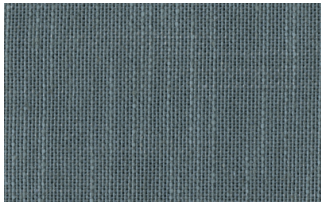


23

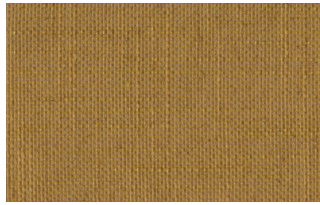


29





31

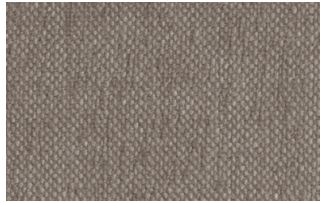


43

## Mimi



A3004



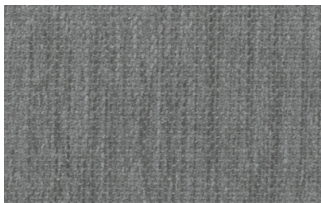
A3005



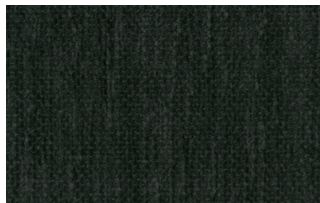
A3006



A3014



A3018

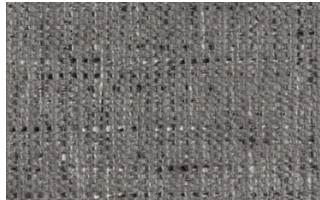


A3023

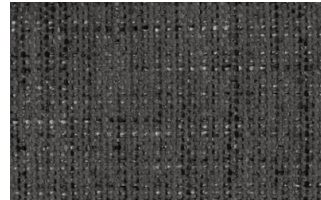
## Memphis



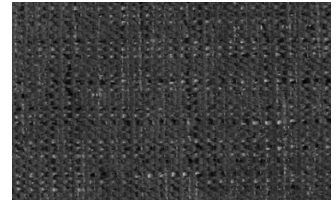
1



6



10



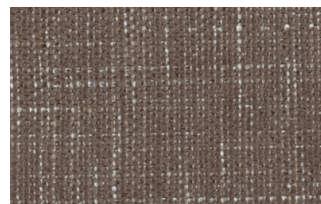
11



13



14



15



16

## SUPER

### Hylemt



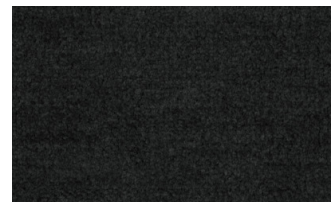
25



102



109



117





121



204



207

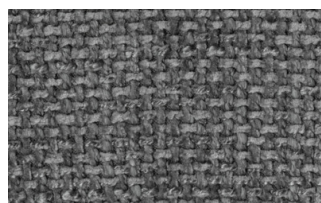
## Axum



3



11



12



18



21



23



29



30

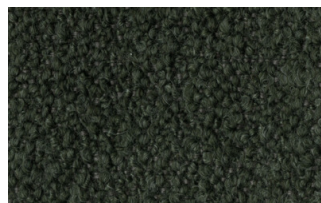
## Barnum Unito



1 bianco



2 corda



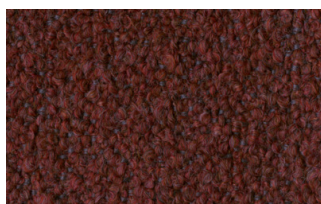
9 bosco



10 piombo



13 lavagna



23 bruciato



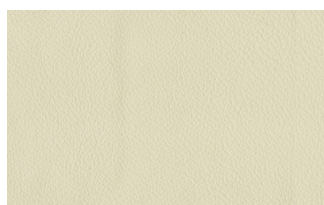
24 lana

## Leathers

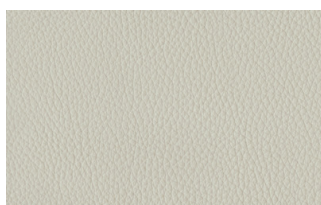
### K LEATHERS

Leather

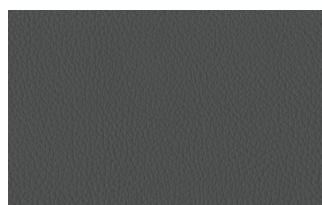




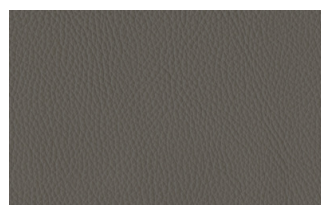
200



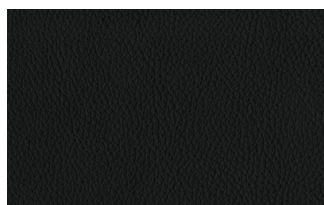
202



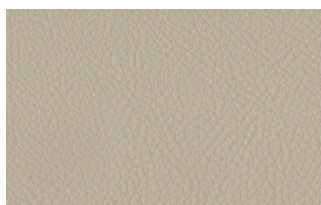
204



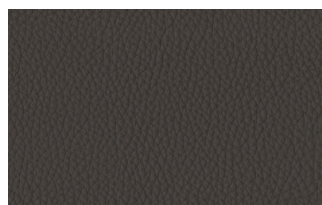
206



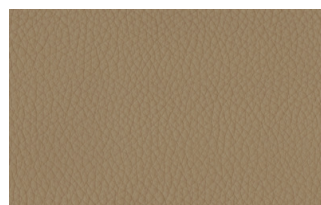
207



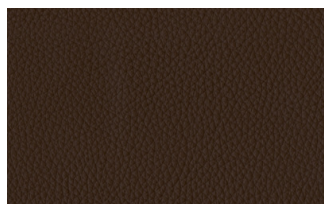
208



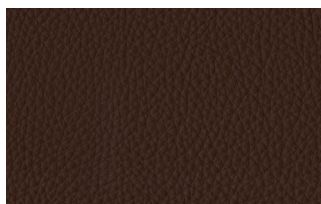
211



214



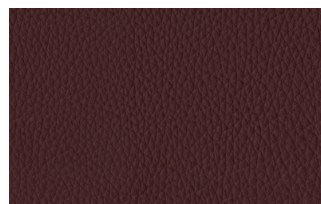
217



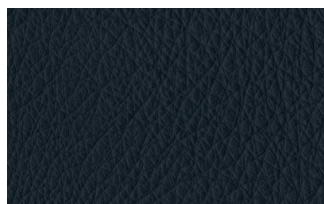
224



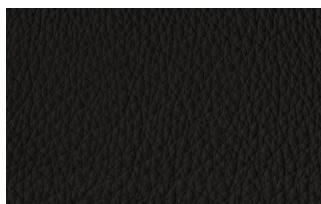
228



234



274



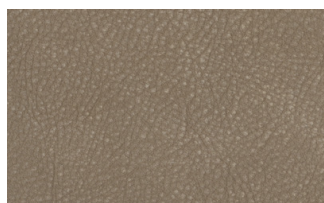
298



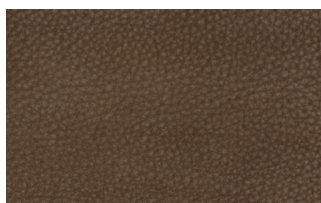
301

## W LEATHERS

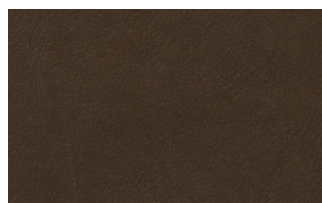
### Nabuk



Creta



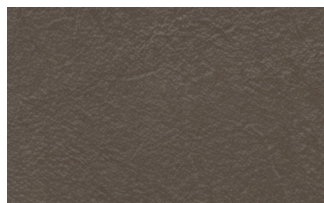
Camel



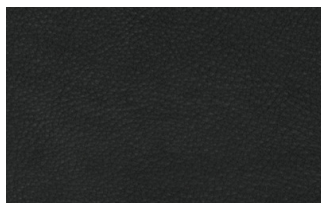
marrone



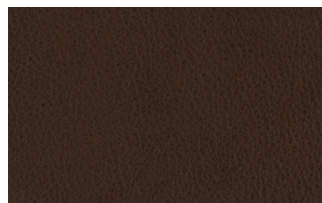
Testa di moro



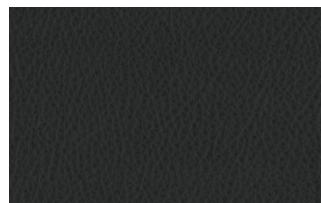
Seppia



Black



Hard leather



Grigio

Ecoleathers

## EXTRA ECO-LEATHERS

### Vintage eco-leather



2



3



3 intreccio



4



6



7



7 intreccio



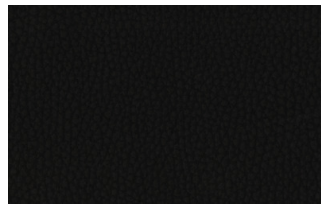
8



8 intreccio



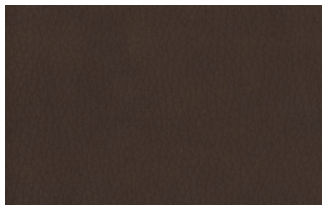
9



14



19



22