

Sedie

# Wendy

Wendy è sia sedia che poltroncina indistruttibile. Ha una struttura in legno con la particolarità che l'anima interna dello schienale è realizzata in acciaio, poi ben imbottita per renderla comoda e rivestita in tessuto, pelle o ecopelle.



## POLTRONCINA WENDY

La poltroncina con braccioli Wendy è sottoposta a una lavorazione a mano di inclinazione laterale del bordo del bracciolo. È grazie a tale intervento che quest'ultimo pare formato da un pezzo continuo di legno, incavato. L'ampia e comoda seduta conferisce un supporto notevole alla schiena e lascia gran libertà all'estetica. Disponibile anche l'opzione fronte e retro diversi, come nell'immagine che abbina ecopelle davanti ed ecopelle intreccio nella parte posteriore dello schienale.



## SEDIA WENDY

La sedia Wendy è elegante nella sua linea tradizionale e slanciata con il suo schienale generoso. È caratterizzata da forme squadrate e rigorose, ideali per chi ama la razionalità, perfetta anche negli ambienti più ristretti.



## FINITURE

Guarda quali sono le finiture disponibili per Wendy, uguali sia per la sedia che per la poltroncina, e immagina la versione perfetta per arredare il tuo spazio.

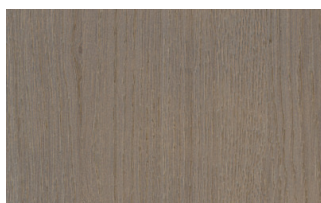
### Essenze

#### ESSENZE 1

##### Essenze 1



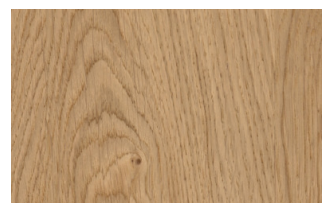
Rovere visone



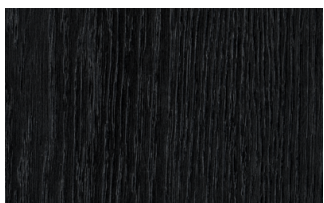
Rovere cenere



Rovere castoro



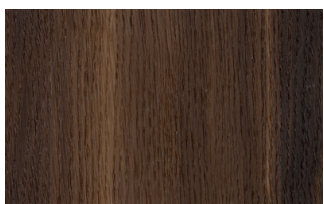
Rovere naturale



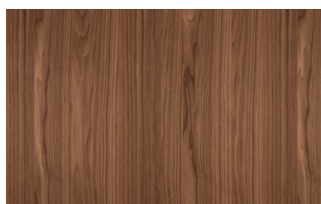
Rovere carbone

#### ESSENZE 2

##### Essenze 2



Rovere termotrattato



Noce Canaletto

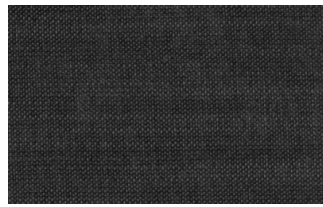
### Tessuti

#### BASIC

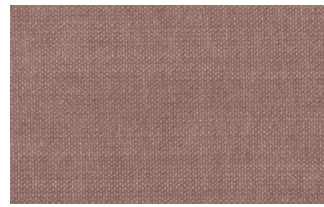
X370



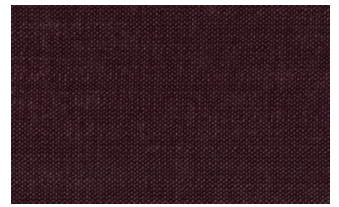
3



4



9



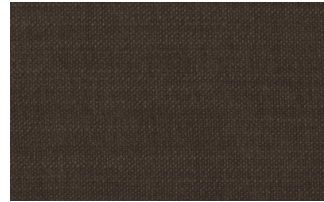
10



23



29



32

## Relax



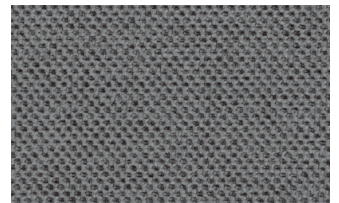
5



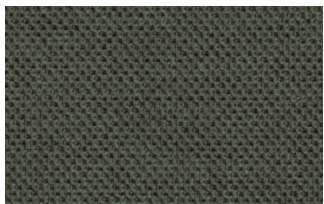
20



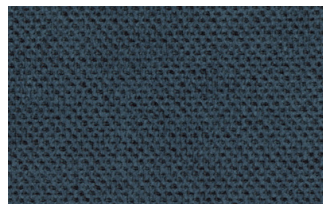
25



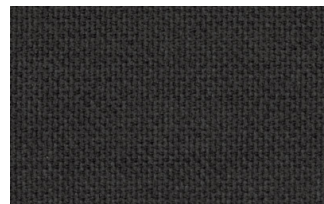
53



62



66



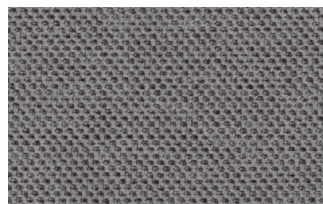
74



81

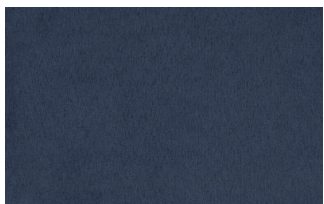


96

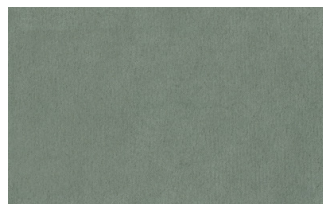


103

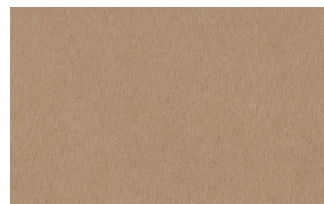
## Divina



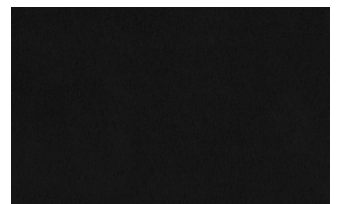
15



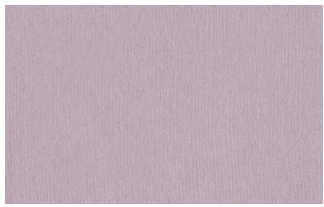
19



21



22



34



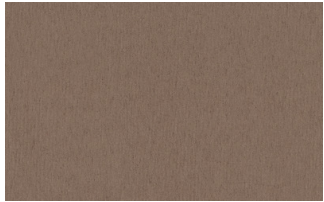
46



49



50



76



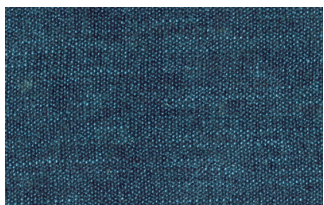
88



561

## START

### Scoop



6



7



9



25



31



59



104



561

### Stropiccio



4



6



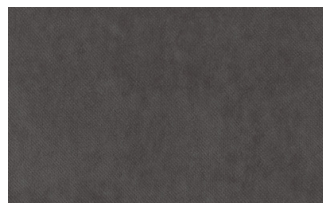
8



17



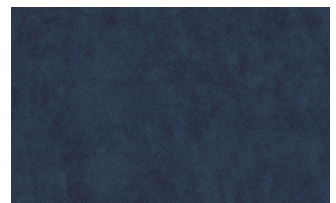
19



20



22

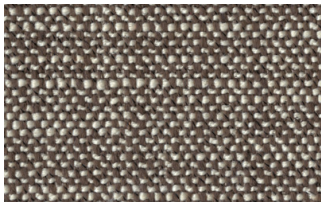


23

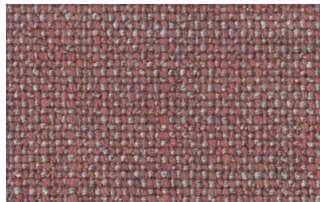


30

## Nodone



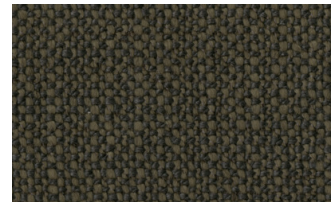
1302



1307



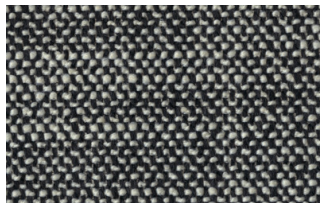
1308



1309



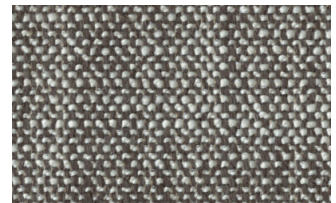
1310



1311



1313



1314

## R Flair



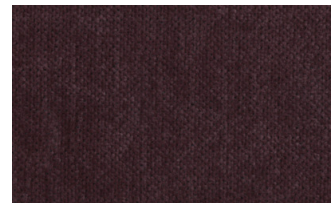
P321-6200-039



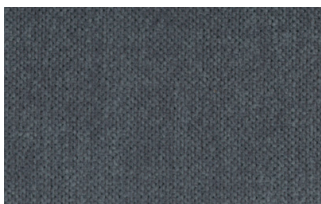
P321-6200-901



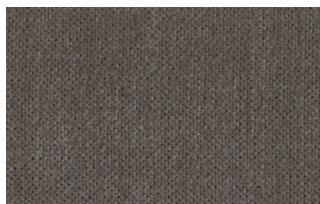
P321-6300-419



P321-6300-503



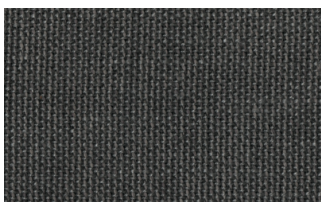
P321-6300-988



P321-6300-996

## EXTRA

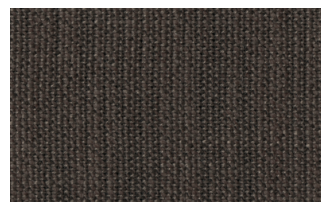
### Anice



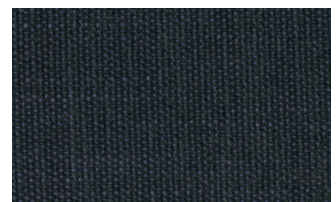
1



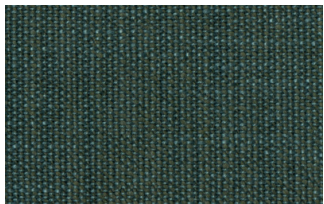
2



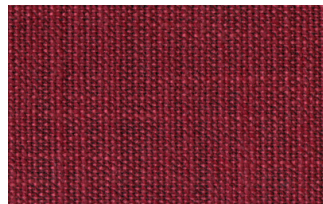
3



4



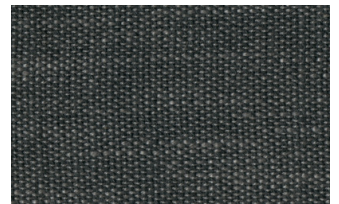
5



6



7

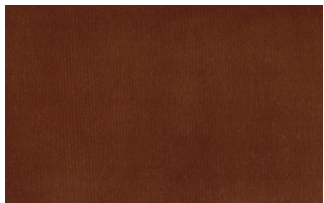


8

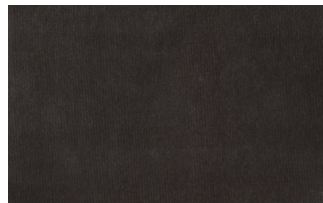


9

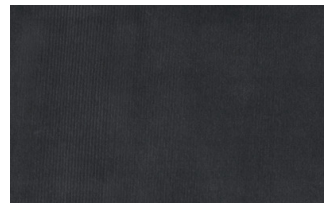
## Lovely



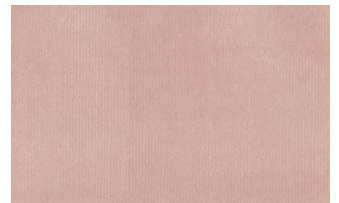
6



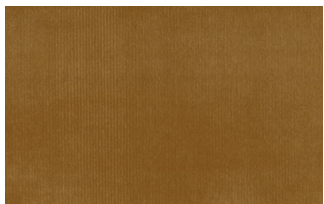
10



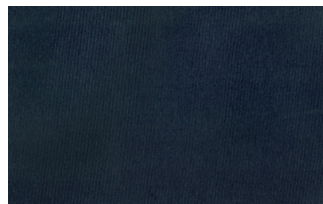
19



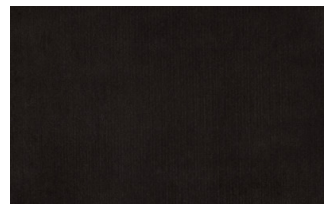
22



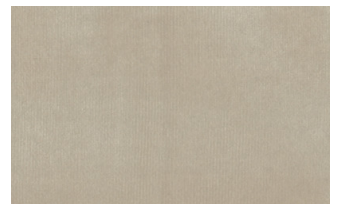
27



31



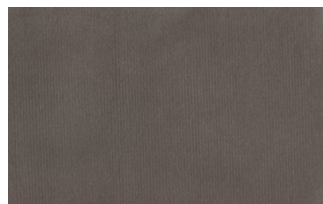
36



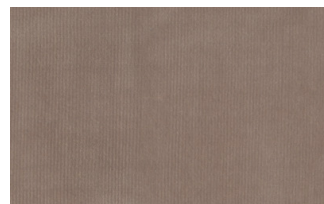
102



113

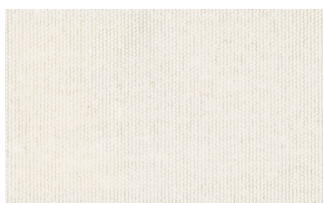


200

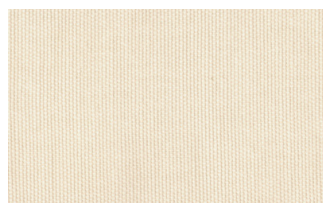


202

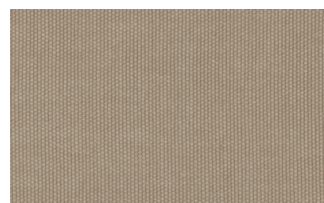
## Cosme



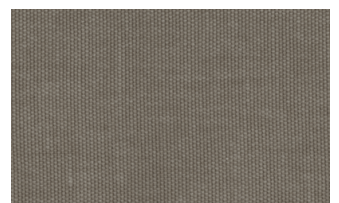
e200



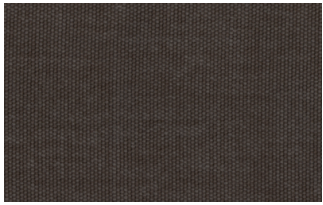
e202



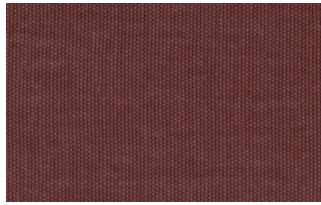
e205



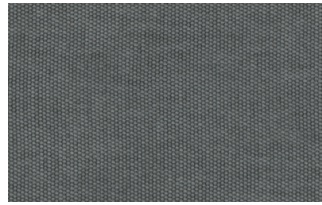
e206



e209



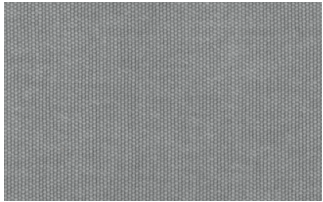
e220



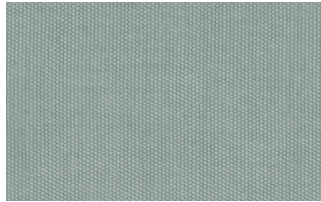
e232



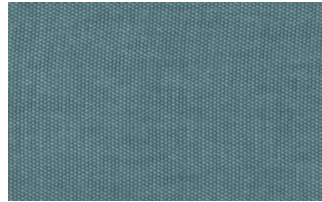
e234



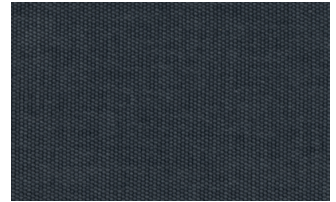
e236



e240

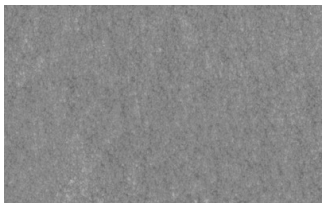


e241



e244

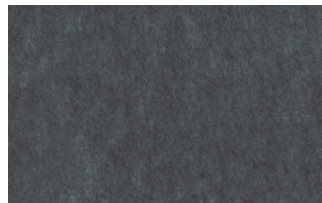
## Soda



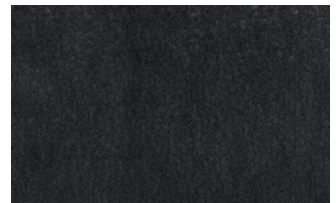
29



30



39



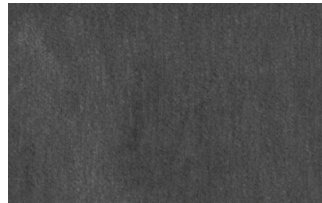
41



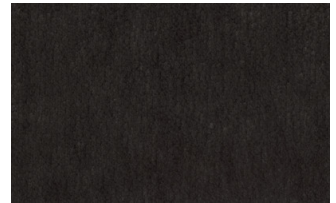
56



62



74



104

## LIGHT

### Lima



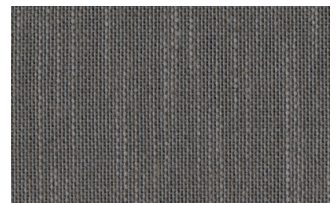
2



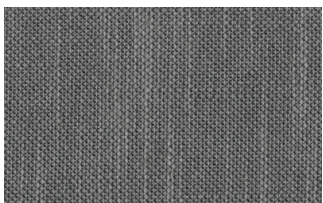
5



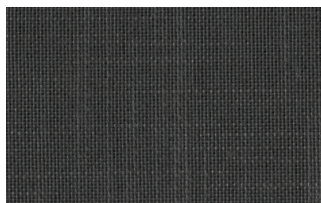
10



12



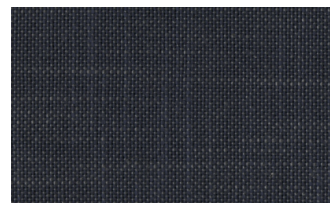
14



16

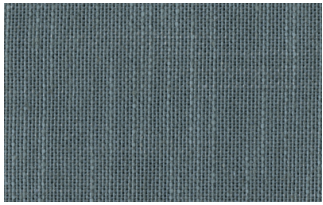


23

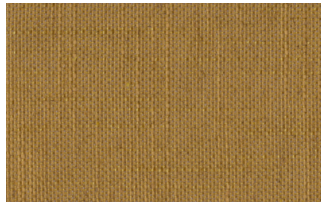


29





31



43

## Mimi



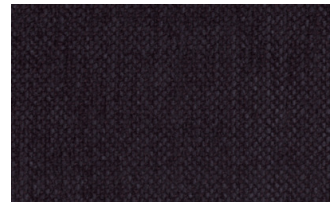
A3004



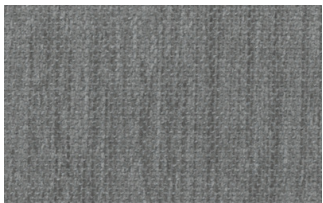
A3005



A3006



A3014



A3018

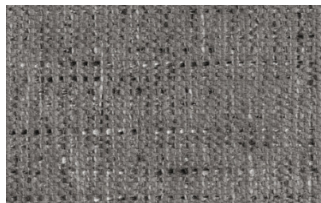


A3023

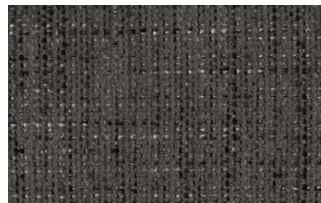
## Memphis



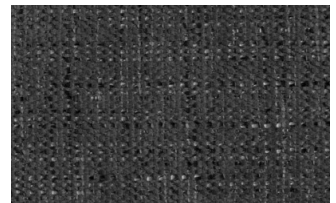
1



6



10



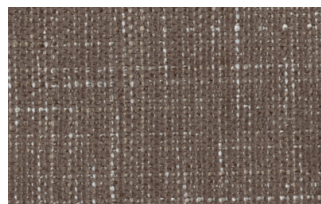
11



13



14



15



16

## SUPER

### Hylemt



25



102



109



117



121



204



207

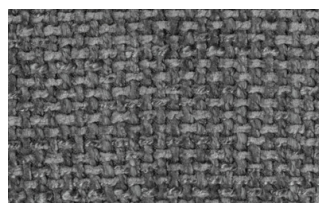
## Axum



3



11



12



18



21



23



29

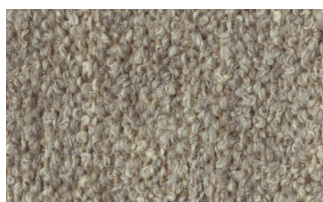


30

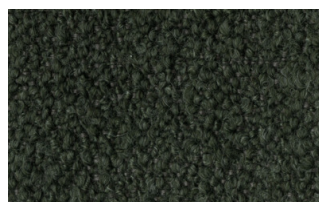
## Barnum Unito



1 bianco



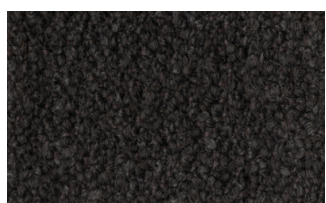
2 corda



9 bosco



10 piombo



13 lavagna



23 bruciato



24 lana

## Pelli

### PELLI K

Pelle



200



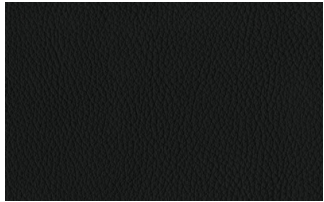
202



204



206



207



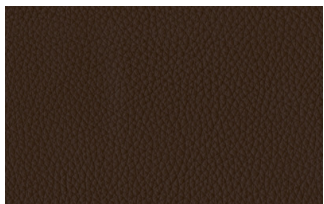
208



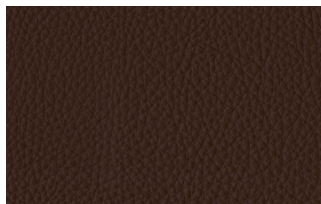
211



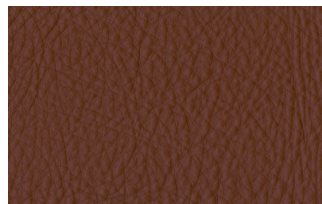
214



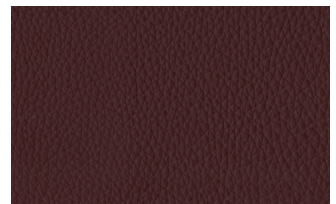
217



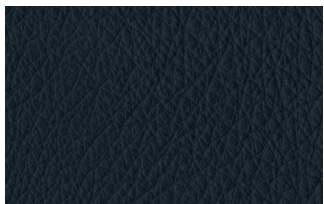
224



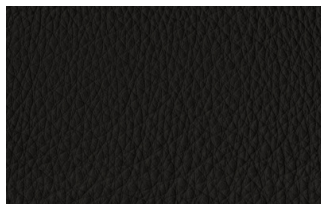
228



234



274



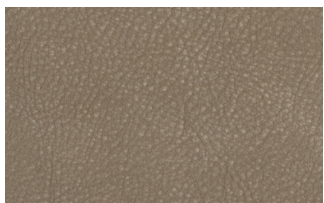
298



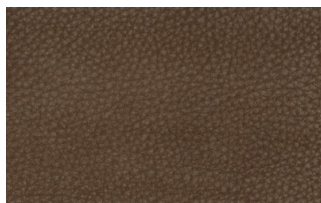
301

## PELLI W

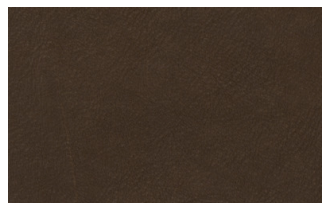
### Nabuk



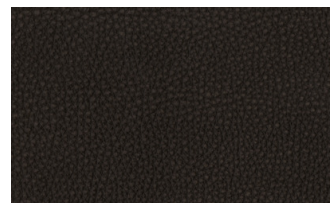
Creta



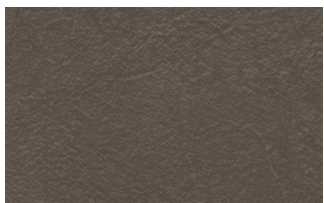
Camel



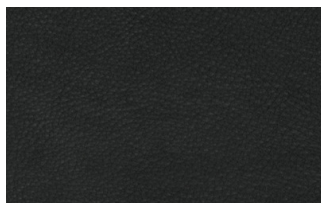
Marrone



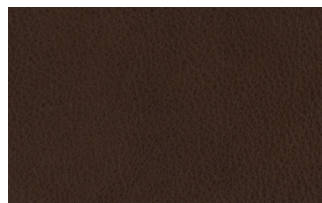
Testa di moro



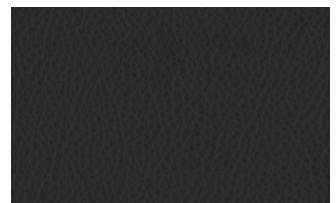
Seppia



Black



Cuoio



Grigio

Ecopelli

## EXTRA ECOPELLI

Fintapelle vintage



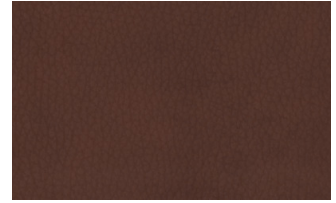
2



3



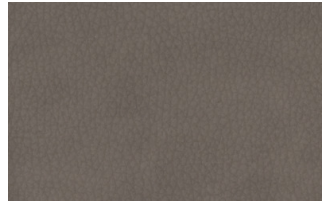
3 intreccio



4



6



7



7 intreccio



8



8 intreccio



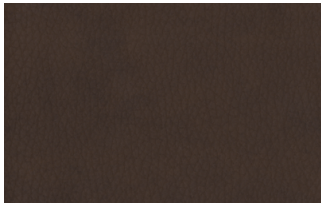
9



14



19



22