

Chairs

Joelle

Simplicity and comfort. Joelle is an upholstered chair with a back with remarkable lumbar support. The linear base is expertly softened around the perimeter.



STRUCTURE AND COATINGS

Joelle is a chair with a solid wood frame and upholstery in fabric, leather or faux leather. You can also decide to make the back of the back with a different material or finish than the front. Joelle's simplicity also makes it easy to match with other chairs. For example, if you like to mix chairs around the table, we suggest matching it with the Gulp chair.



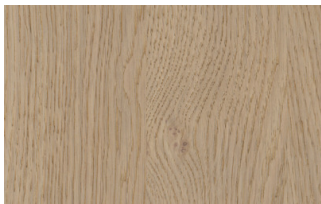
FINISHES

Different fronts and backs for the Joelle chair allow you to play with fabric/fabric, fabric/ecoleather, woven fabric/ecoleather, or woven faux leather/ecoleather.

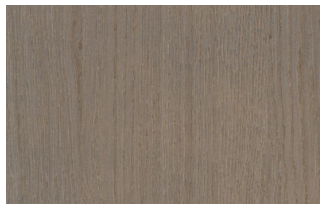
Woods

WOODS 1

Woods 1



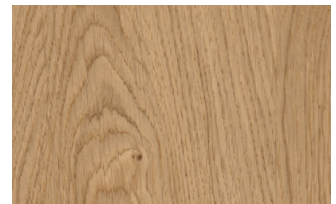
Oak visone



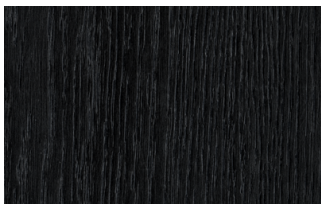
Oak cenere



Oak castoro



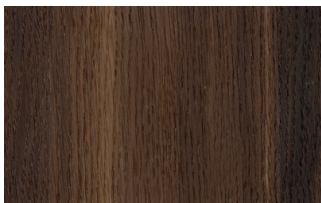
Natural oak



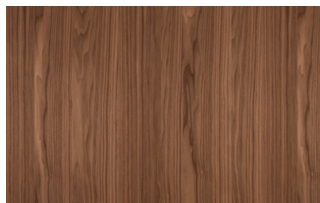
Oak carbone

WOODS 2

Woods 2



Heat - treated oak



Canaletto walnut

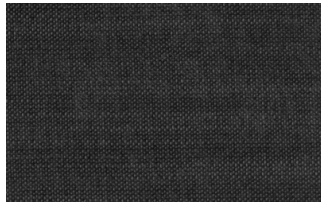
Fabrics

BASIC

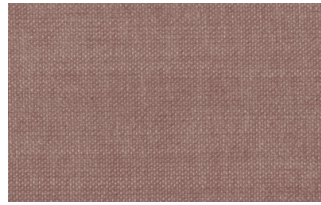
X370



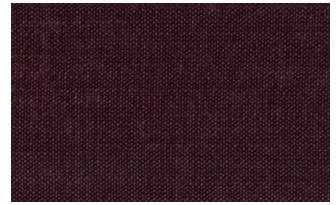
3



4



9



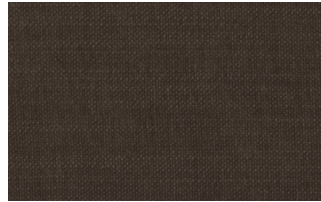
10



23



29



32

Relax



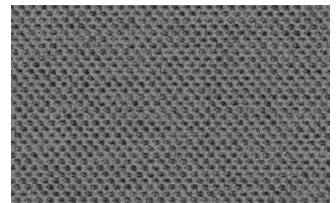
5



20



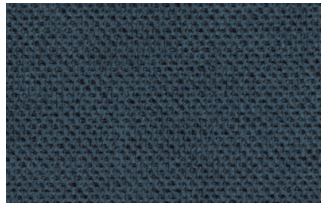
25



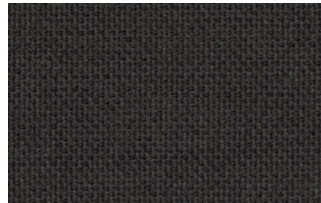
53



62



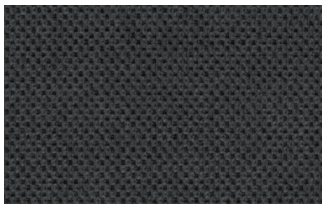
66



74



81

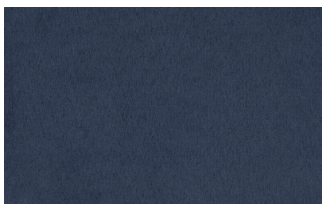


96



103

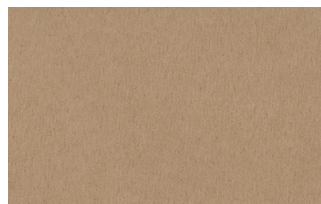
Divina



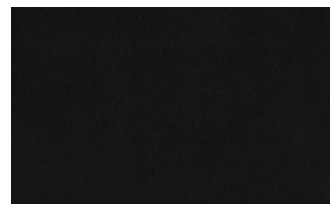
15



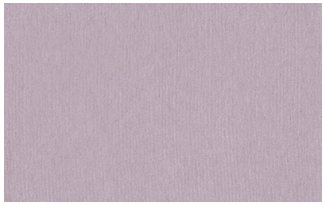
19



21



22



34



46



49



50



76



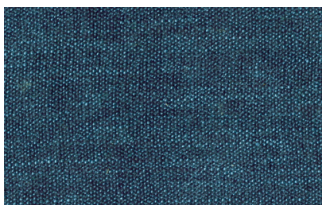
88



561

START

Scoop



6



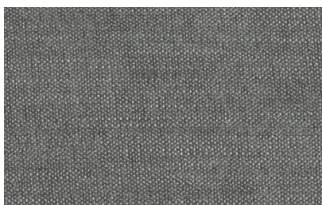
7



9



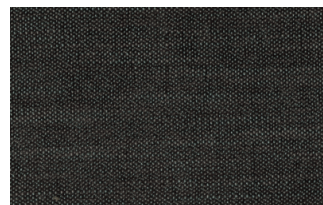
25



31



59

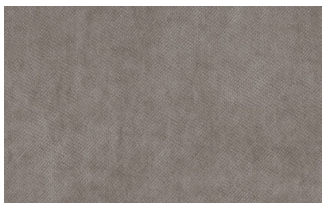


104



561

Stropiccio



4



6



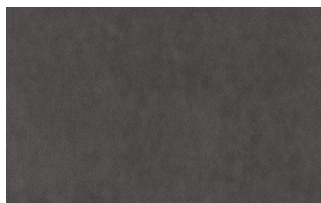
8



17



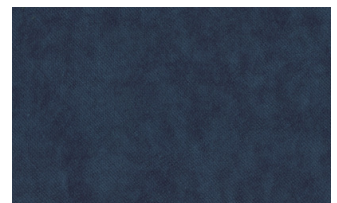
19



20



22

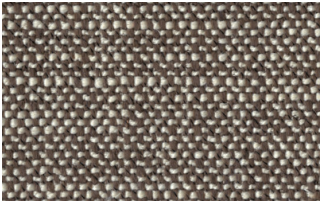


23

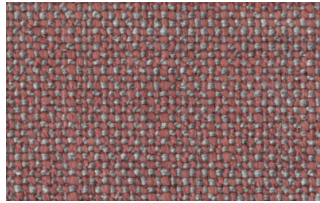


30

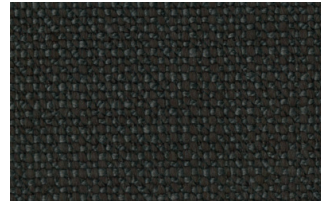
Nodone



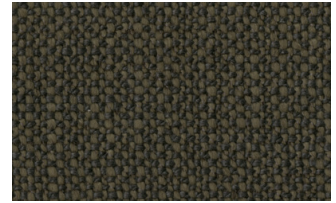
1302



1307



1308



1309



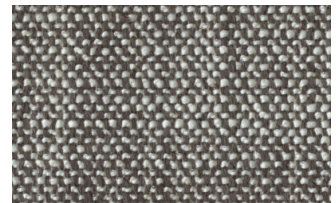
1310



1311



1313



1314

R Flair



P321-6200-039



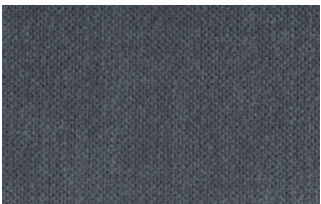
P321-6200-901



P321-6300-419



P321-6300-503



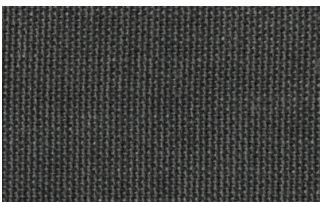
P321-6300-988



P321-6300-996

EXTRA

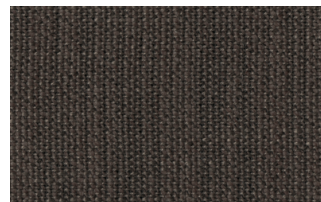
Anice



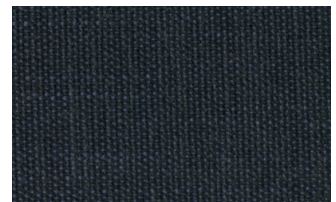
1



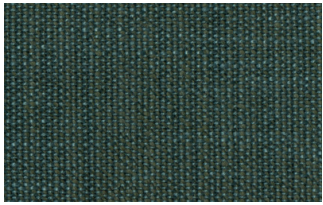
2



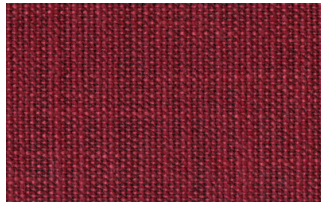
3



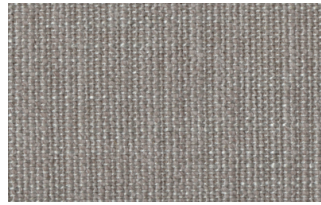
4



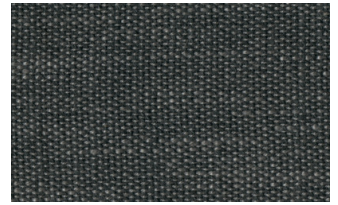
5



6



7

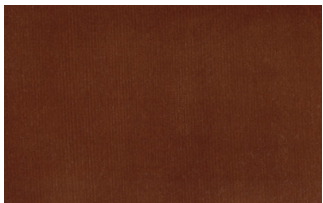


8

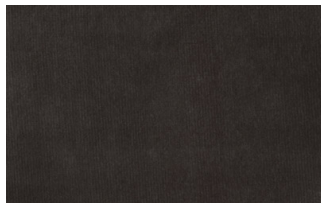


9

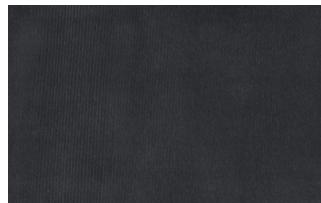
Lovely



6



10



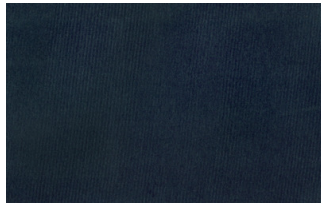
19



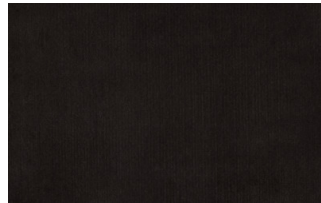
22



27



31



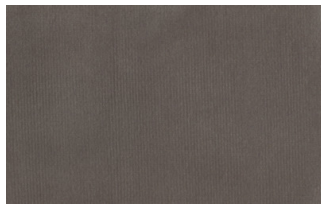
36



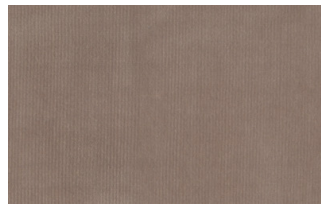
102



113



200

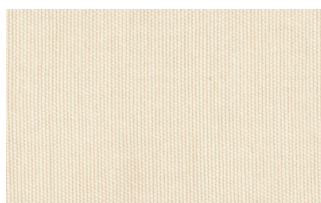


202

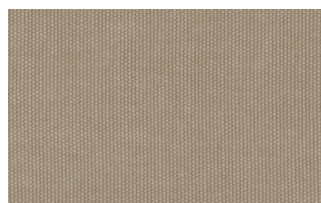
Cosme



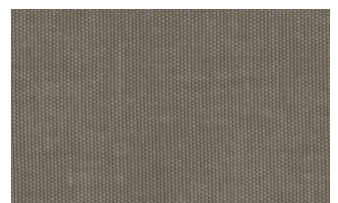
e200



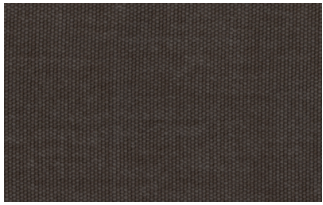
e202



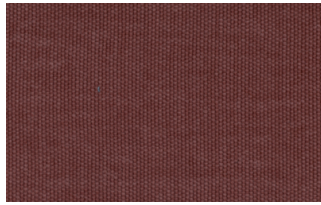
e205



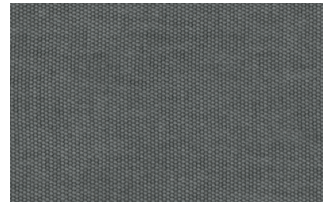
e206



e209



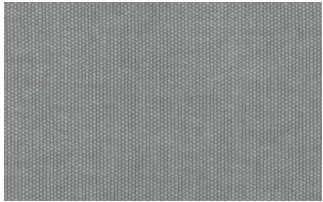
e220



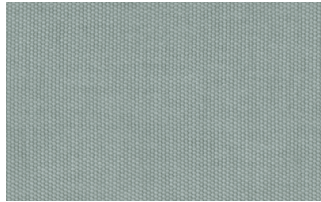
e232



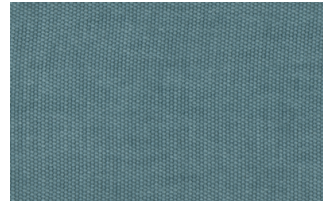
e234



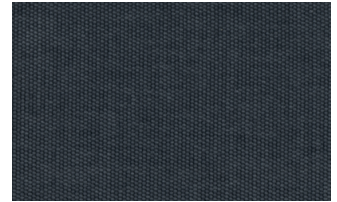
e236



e240

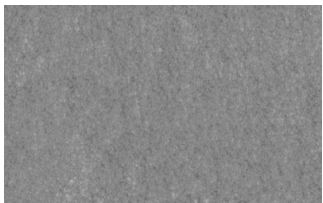


e241



e244

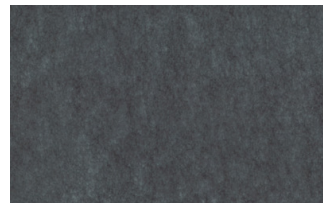
Soda



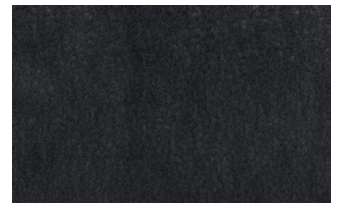
29



30



39



41



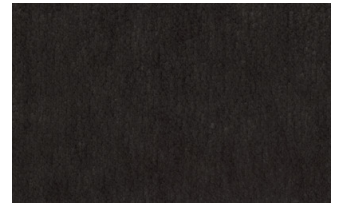
56



62



74



104

LIGHT

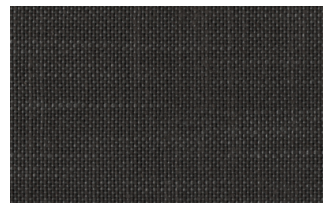
Lima



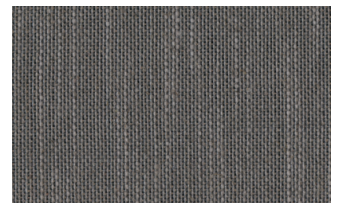
2



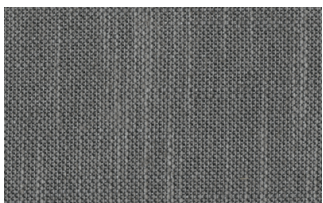
5



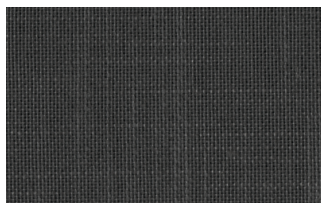
10



12



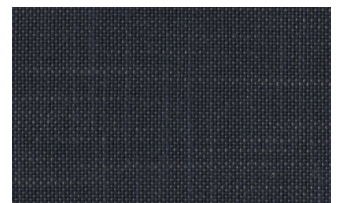
14



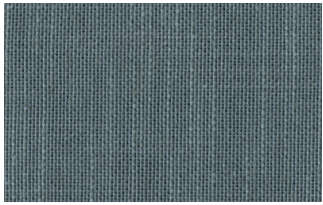
16



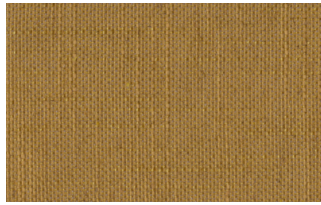
23



29



31



43

Mimi



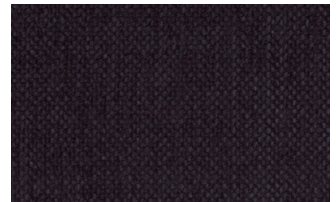
A3004



A3005



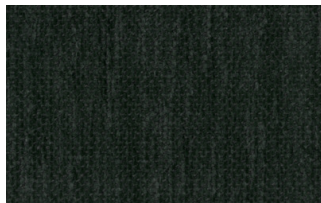
A3006



A3014



A3018

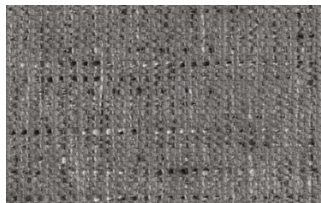


A3023

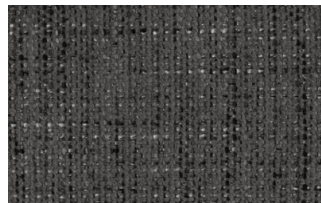
Memphis



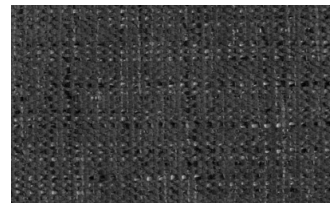
1



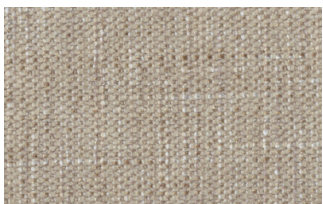
6



10



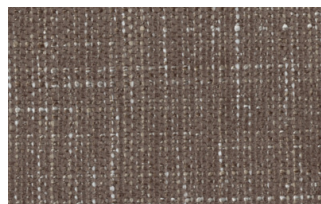
11



13



14



15



16

SUPER

Hylemt



25



102



109



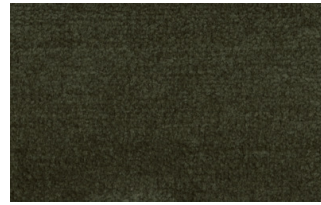
117



121



204

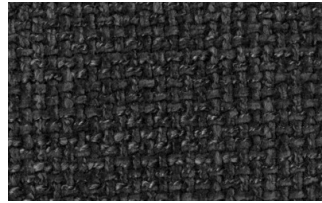


207

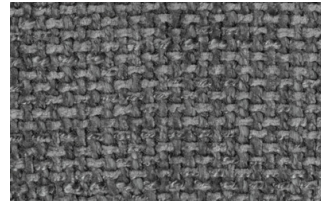
Axum



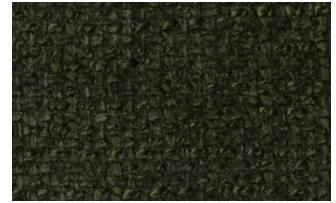
3



11



12



18



21



23



29



30

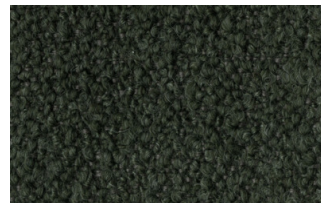
Barnum Unito



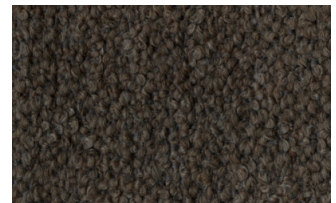
1 bianco



2 corda



9 bosco



10 piombo



13 lavagna



23 bruciato



24 lana

Leathers

K LEATHERS

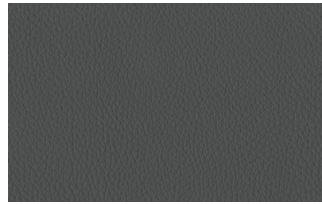
Leather



200



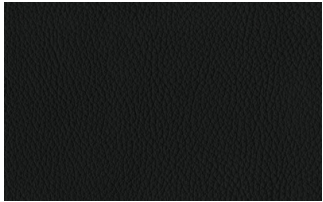
202



204



206



207



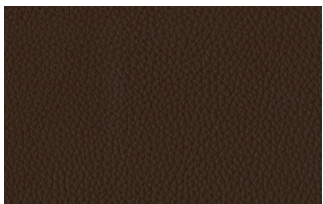
208



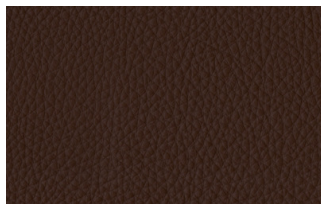
211



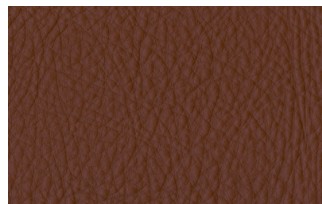
214



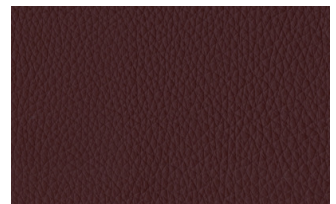
217



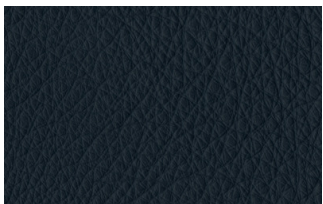
224



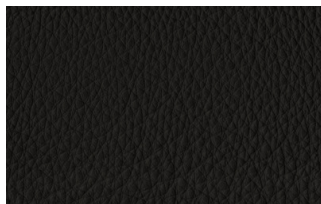
228



234



274



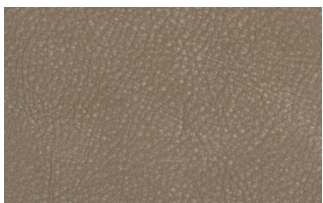
298



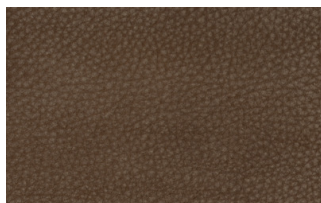
301

W LEATHERS

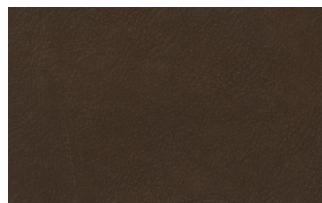
Nabuk



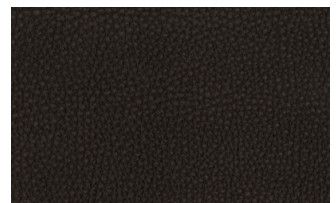
Creta



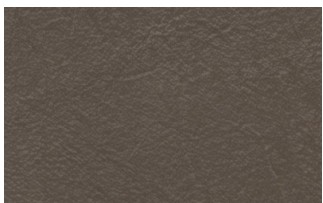
Camel



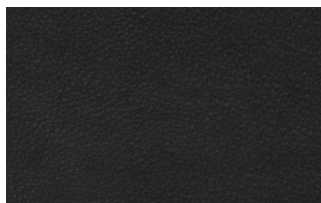
marrone



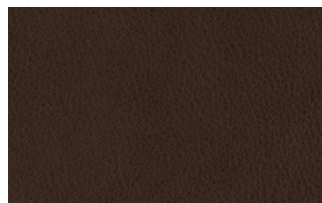
Testa di moro



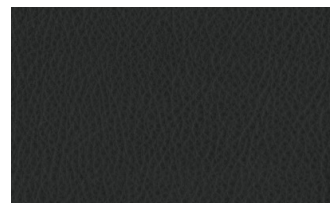
Seppia



Black



Hard leather



Grigio

Ecoleathers

EXTRA ECO-LEATHERS

Vintage eco-leather



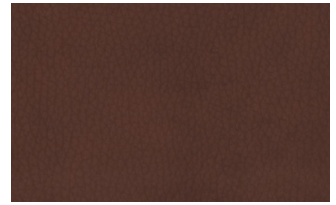
2



3



3 intreccio



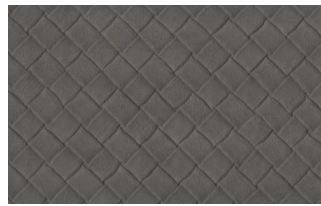
4



6



7



7 intreccio



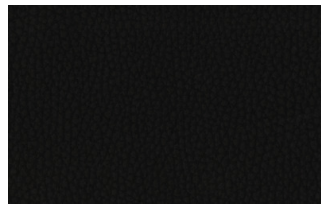
8



8 intreccio



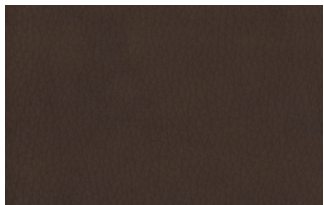
9



14



19



22